

Fig.3 **DISTRIBUTION MAP OF METALLIC MINERAL DEPOSITS IN INDONESIA**

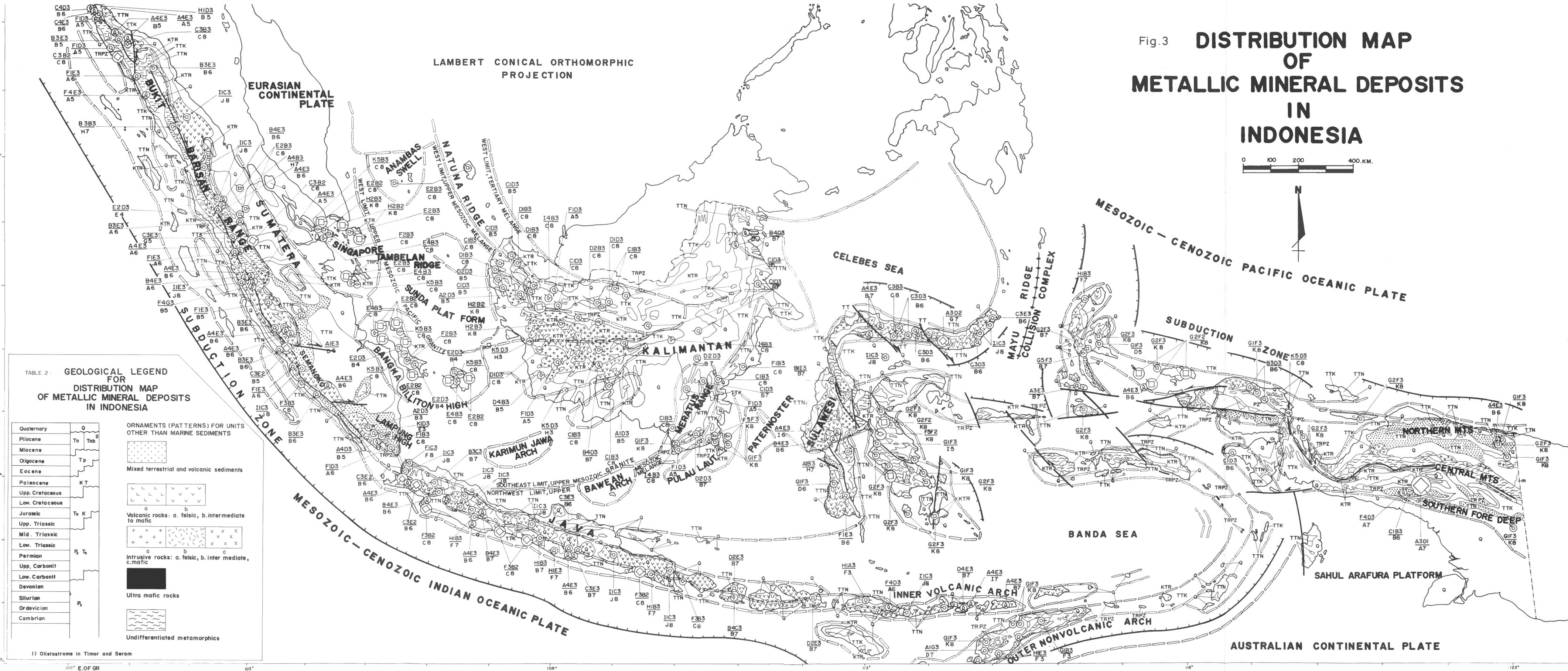


TABLE 2 : **GEOLOGICAL LEGEND FOR DISTRIBUTION MAP OF METALLIC MINERAL DEPOSITS IN INDONESIA**

Quaternary	Q	
Pliocene	Tn	Tnb
Miocene		
Oligocene	Tp	
Eocene		
Paleocene	KT	
Upp. Cretaceous		
Low. Cretaceous		
Jurassic	Ta	K
Upp. Triassic		
Mid. Triassic		
Low. Triassic		
Permian	P ₂	Tn
Upp. Carbonit		
Low. Carbonit		
Devonian		
Silurian	P ₂	
Ordovician		
Cambrian		

<p>ORNAMENTS (PATTERNS) FOR UNITS OTHER THAN MARINE SEDIMENTS</p> <p>Mixed terrestrial and volcanic sediments</p> <p>Volcanic rocks: a. felsic, b. intermediate to mafic</p> <p>Intrusive rocks: a. felsic, b. intermediate, c. mafic</p> <p>Ultra mafic rocks</p> <p>Undifferentiated metamorphics</p>	
---	------------------

1) Olistostrome in Timor and Serom

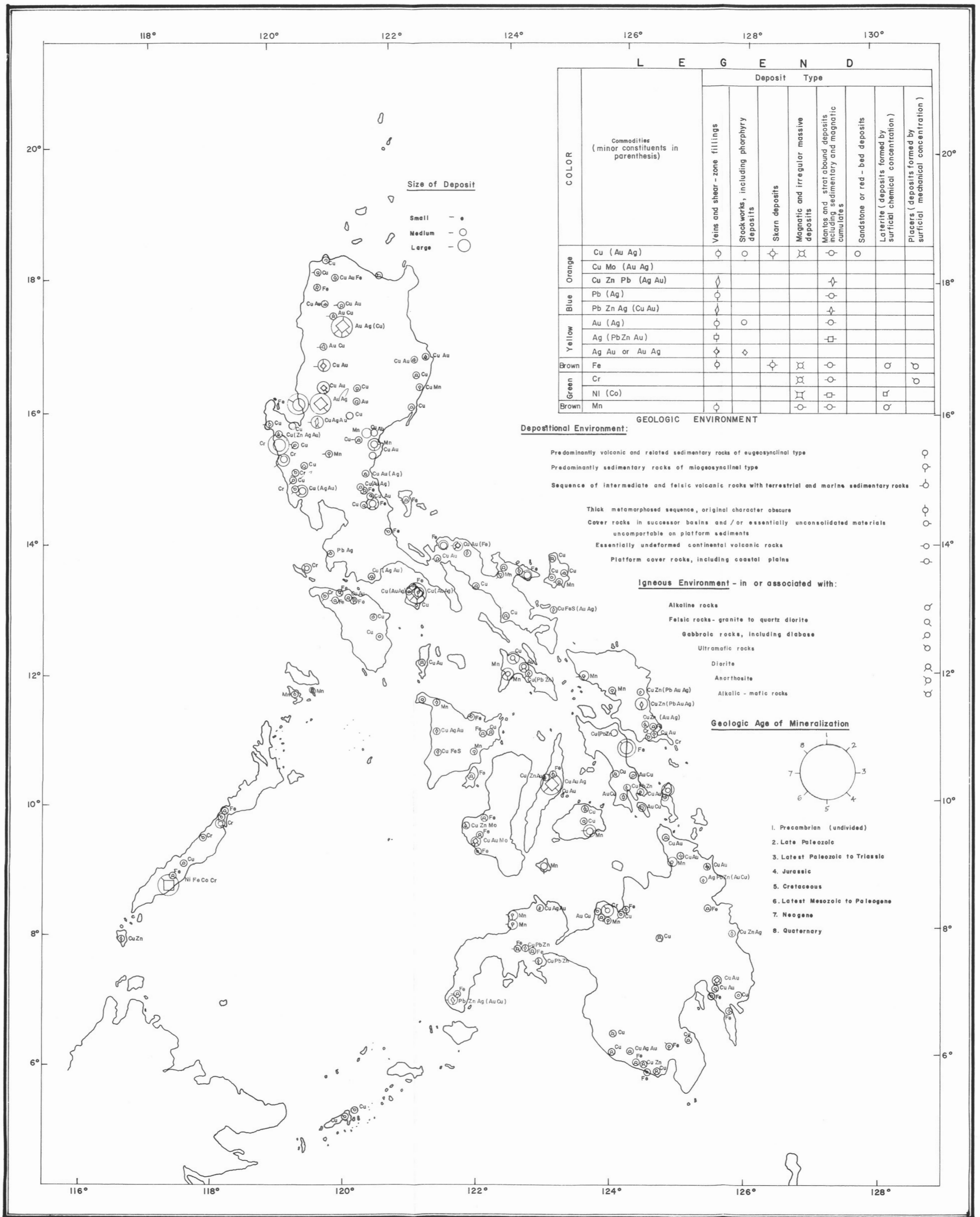


Fig. 4. Metallogenic map of the Philippine Archipelago Scale 1 : 5,000,000

SCALE 1 : 5,000,000