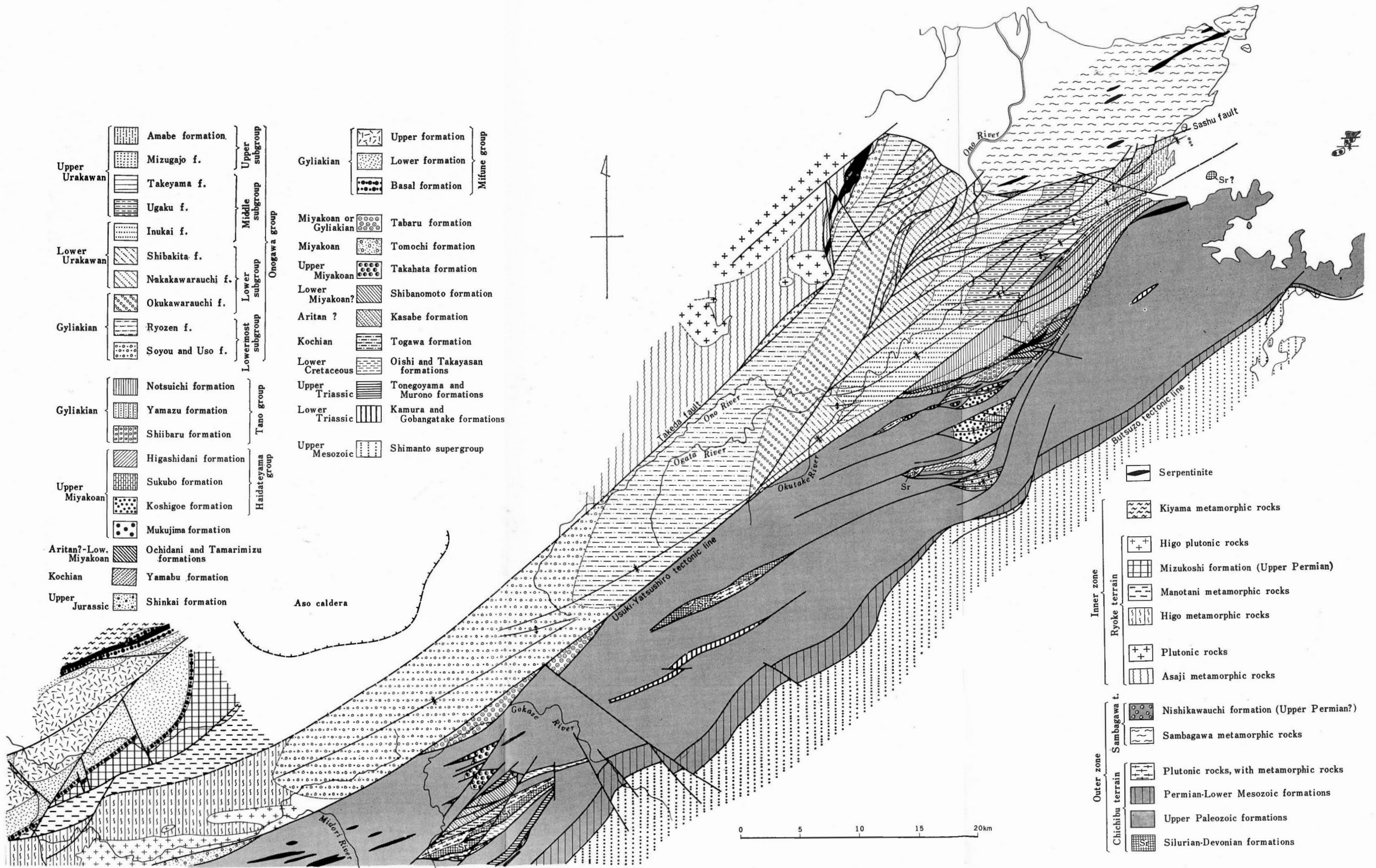
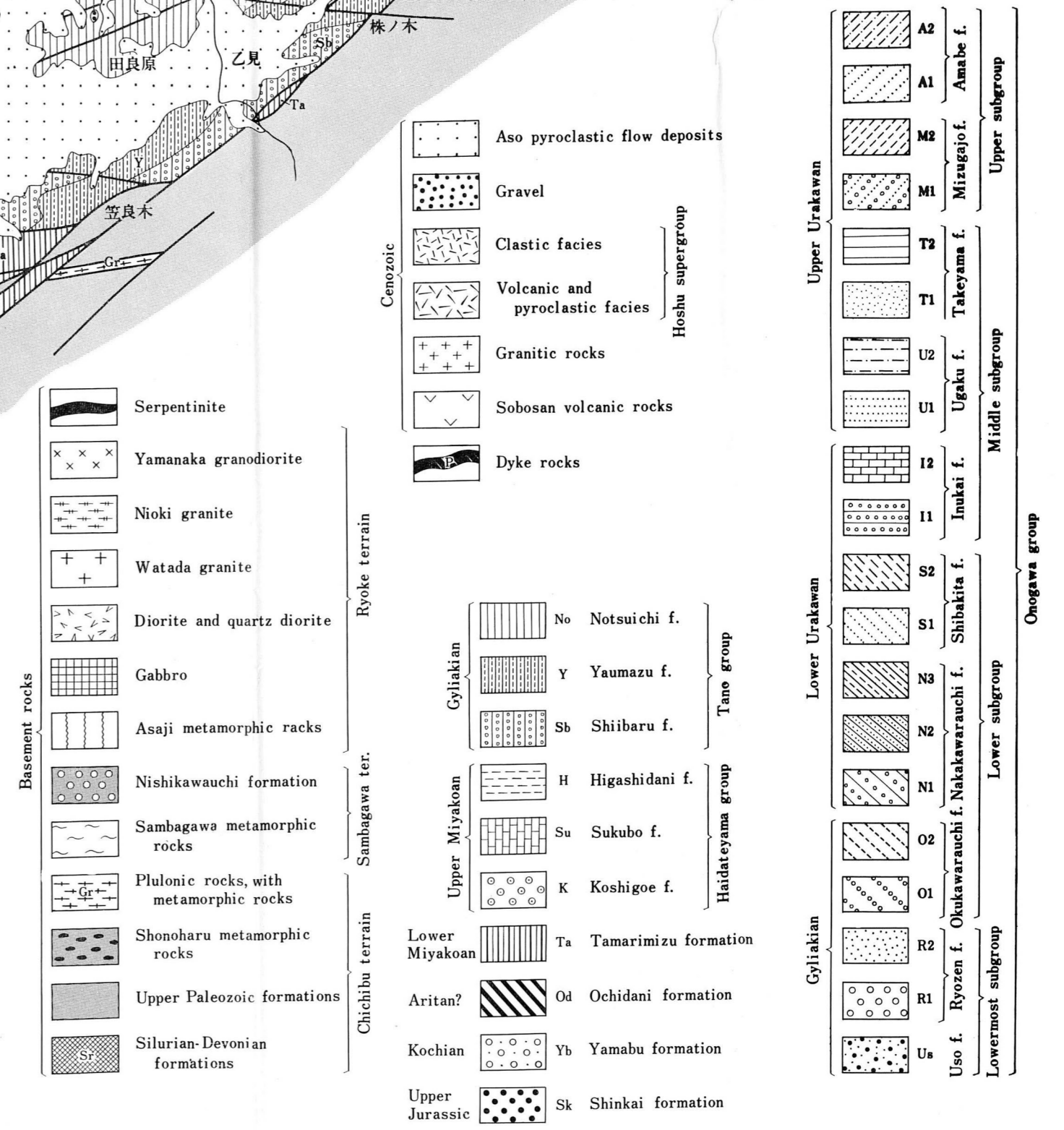
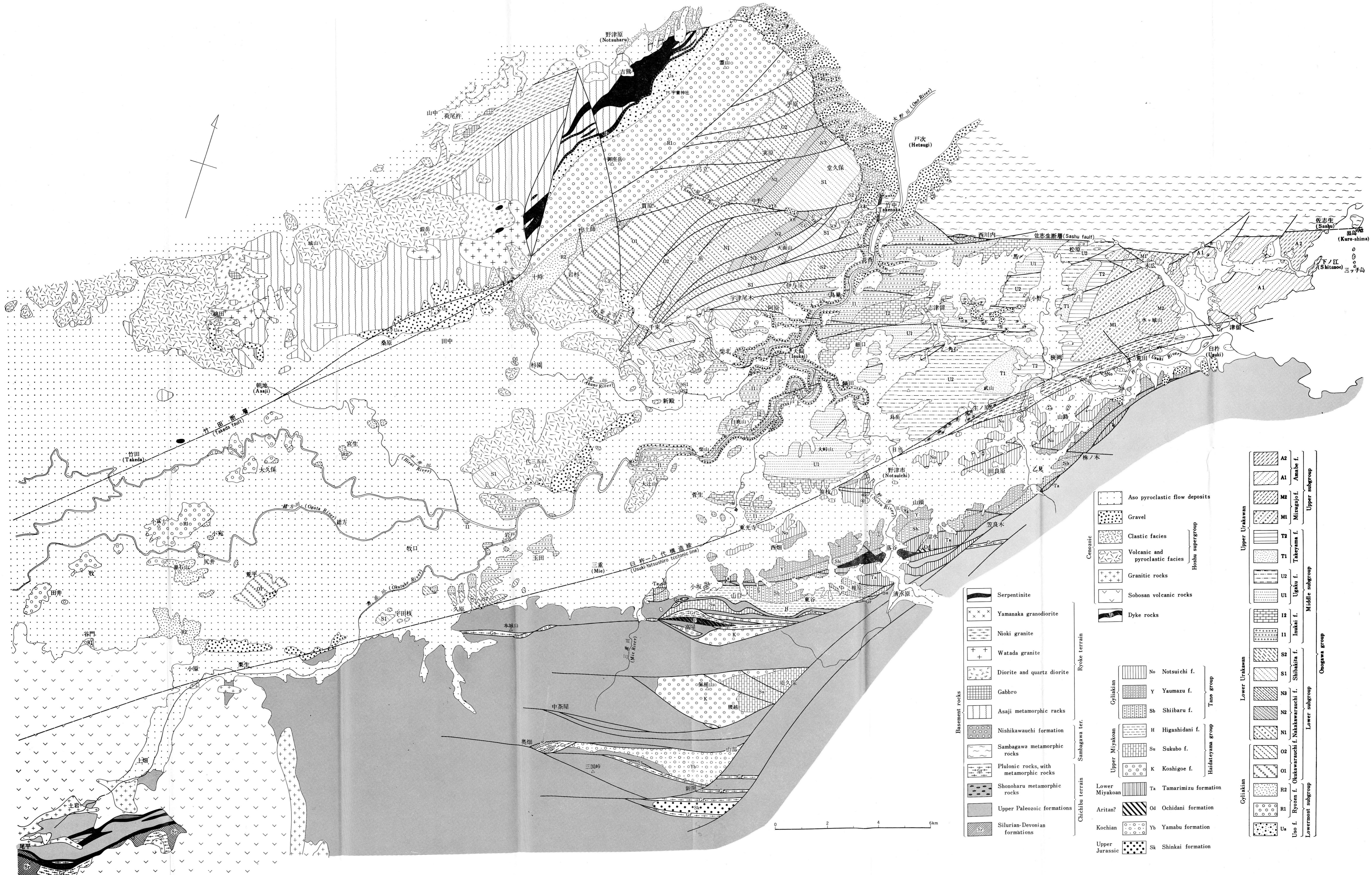


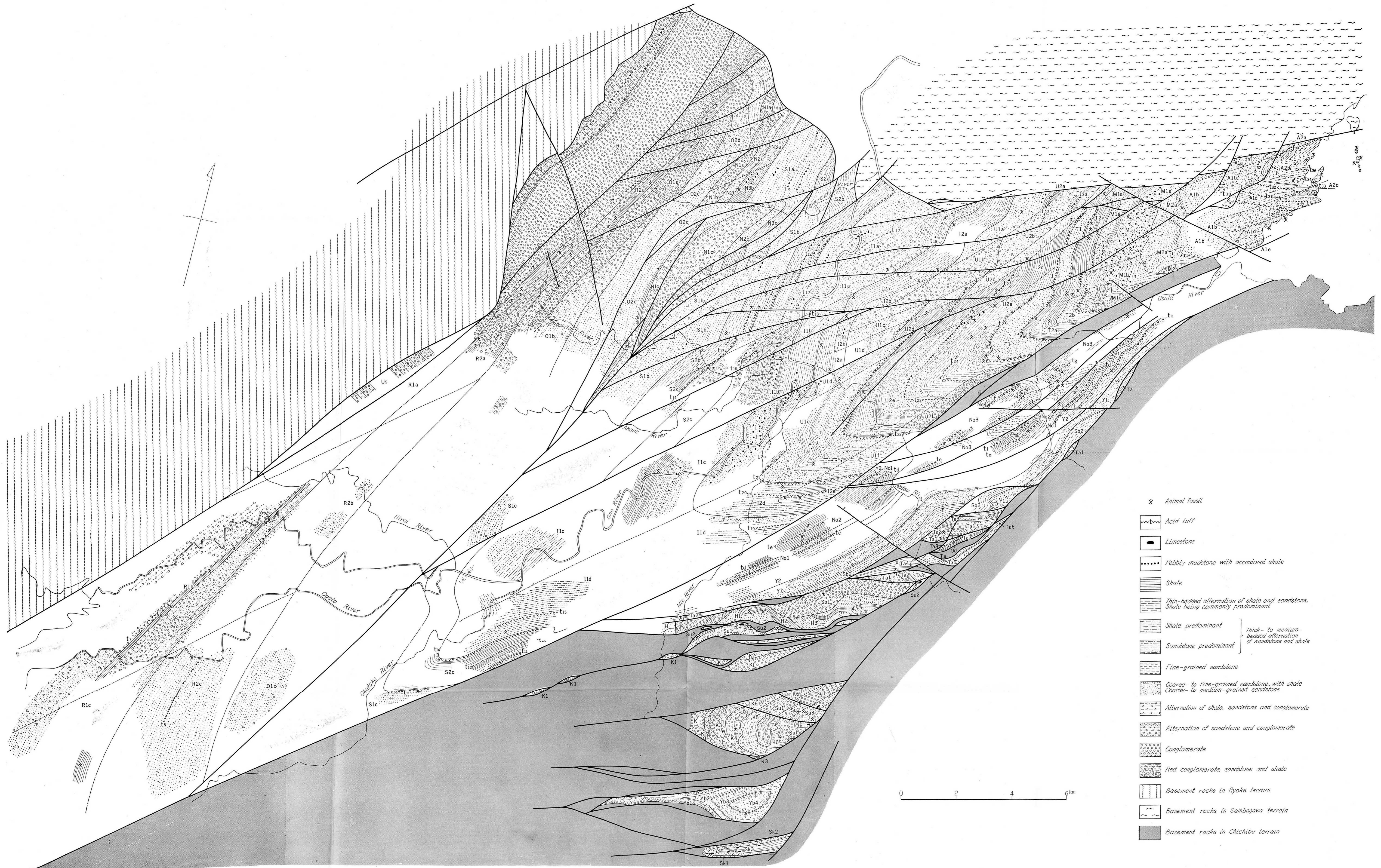
第1図 大野川盆地および隣接地域の地質図(I)  
Geologic map of the Onogawa Basin and its adjacent areas (I).



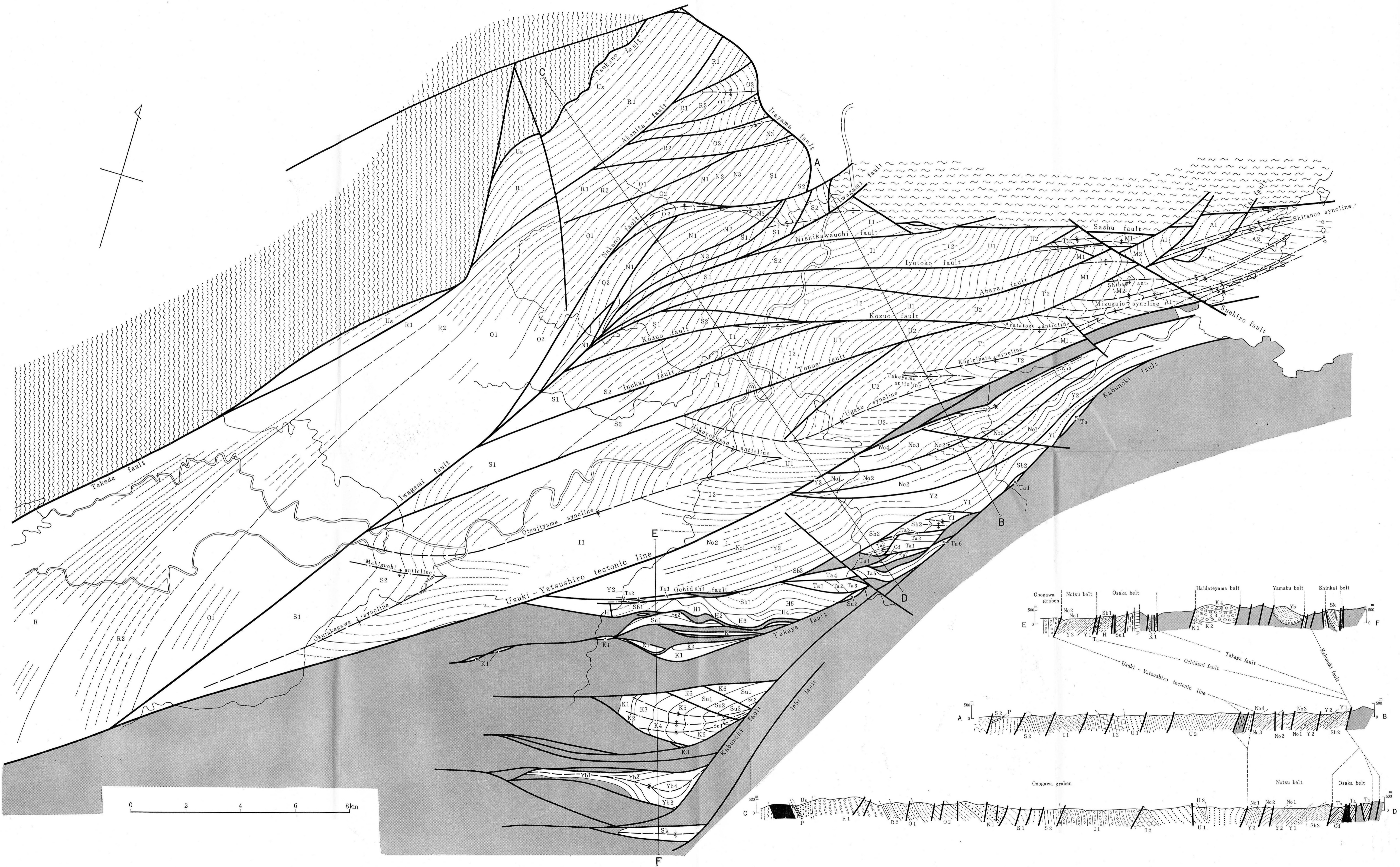
第2図 大野川盆地および隣接地域の地質図(II)  
 Geologic map of the Onogawa Basin and its adjacent areas (II). Cenozoic coverings are stripped off in this figure.



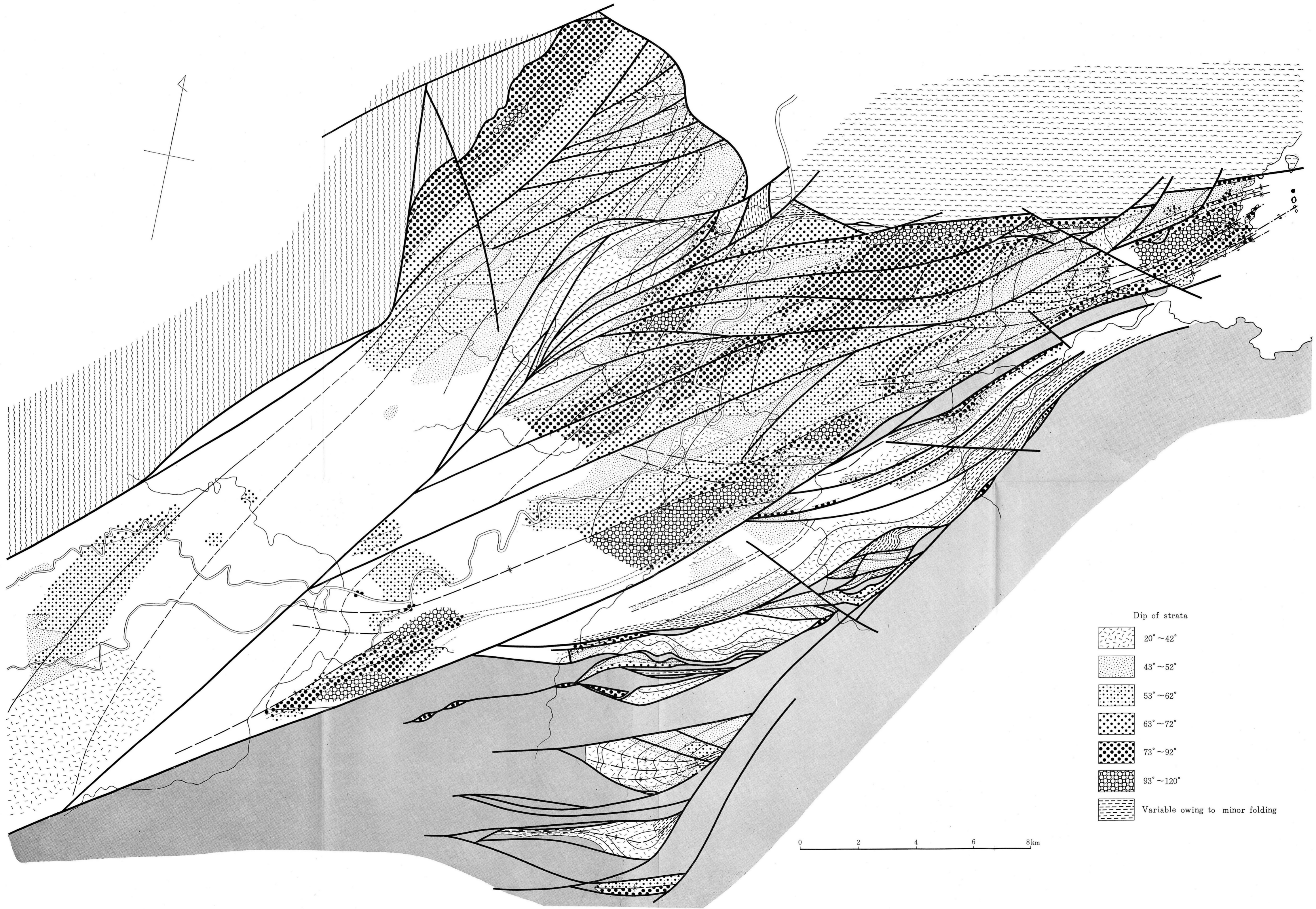
第3図 大野川盆地の地質図  
Geologic map of the Onogawa Basin.



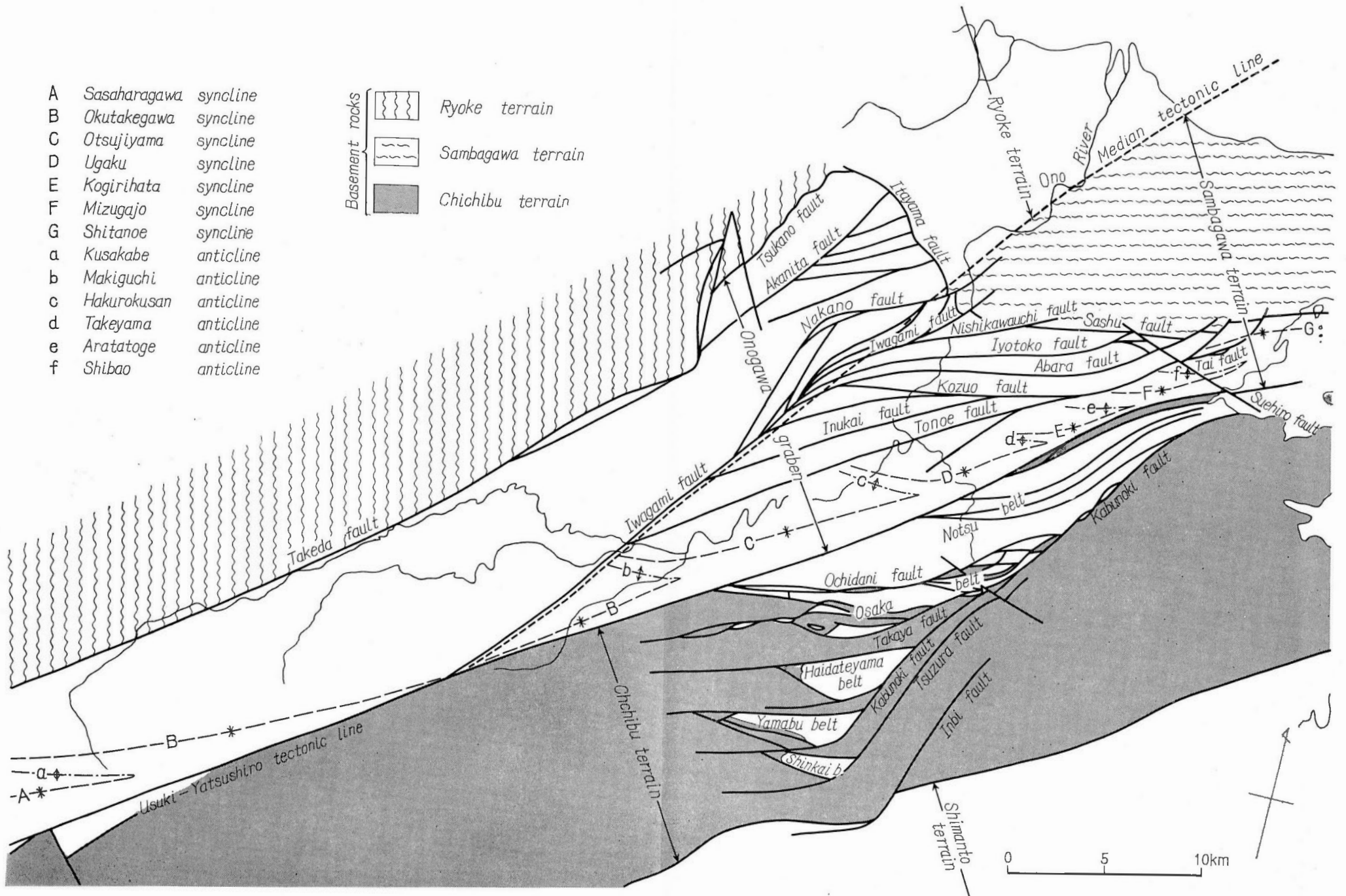
第4圖 大野川盆地の上部中生層相図  
 Facies map of the Upper Mesozoic formations in the Onogawa Basin.



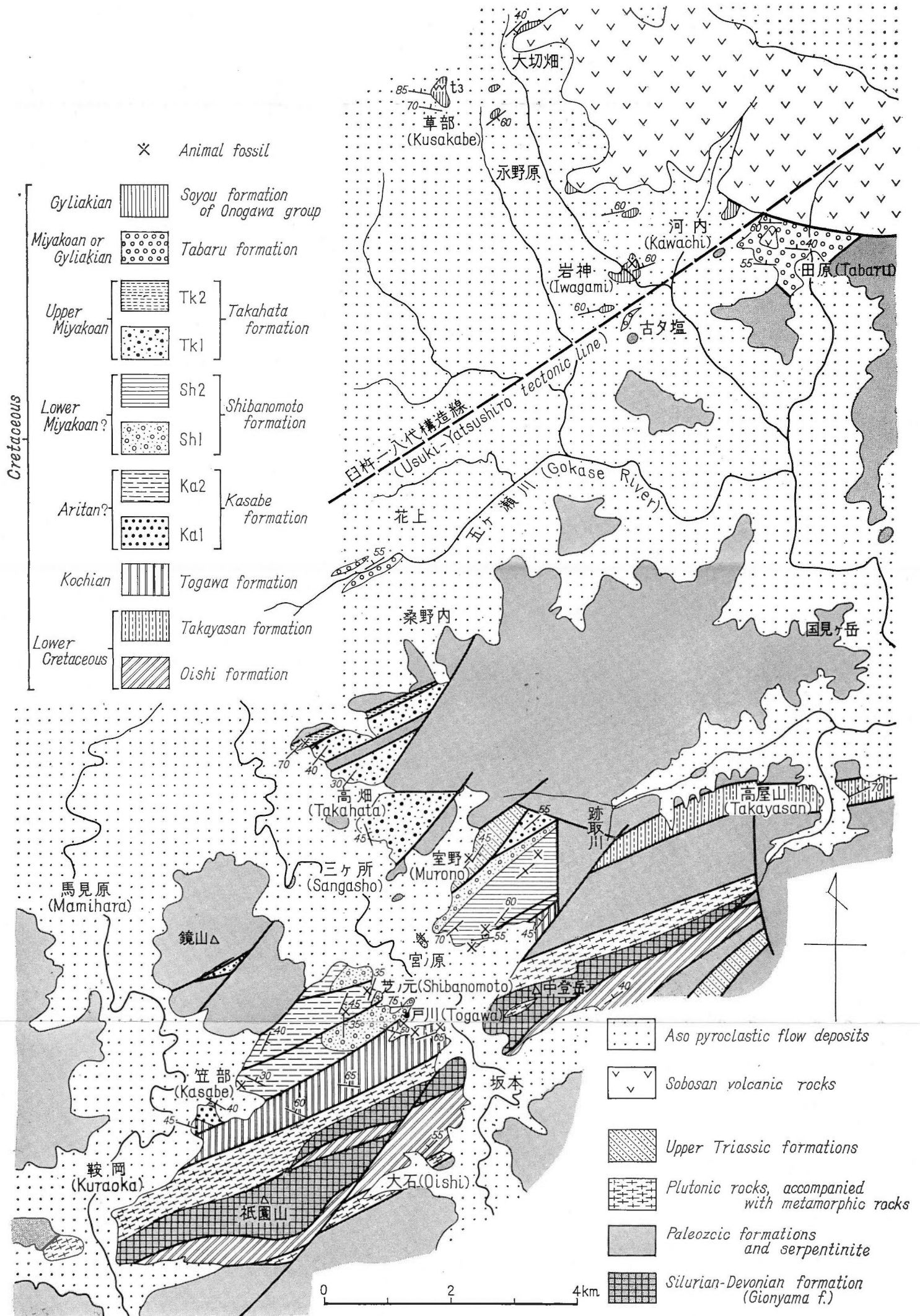
第5図 大野川盆地の構造図 (I)  
Structural map of the Onogawa Basin (I).



第6圖 大野川盆地の構造圖(Ⅱ)  
Structural map of the Onogawa Basin (II).

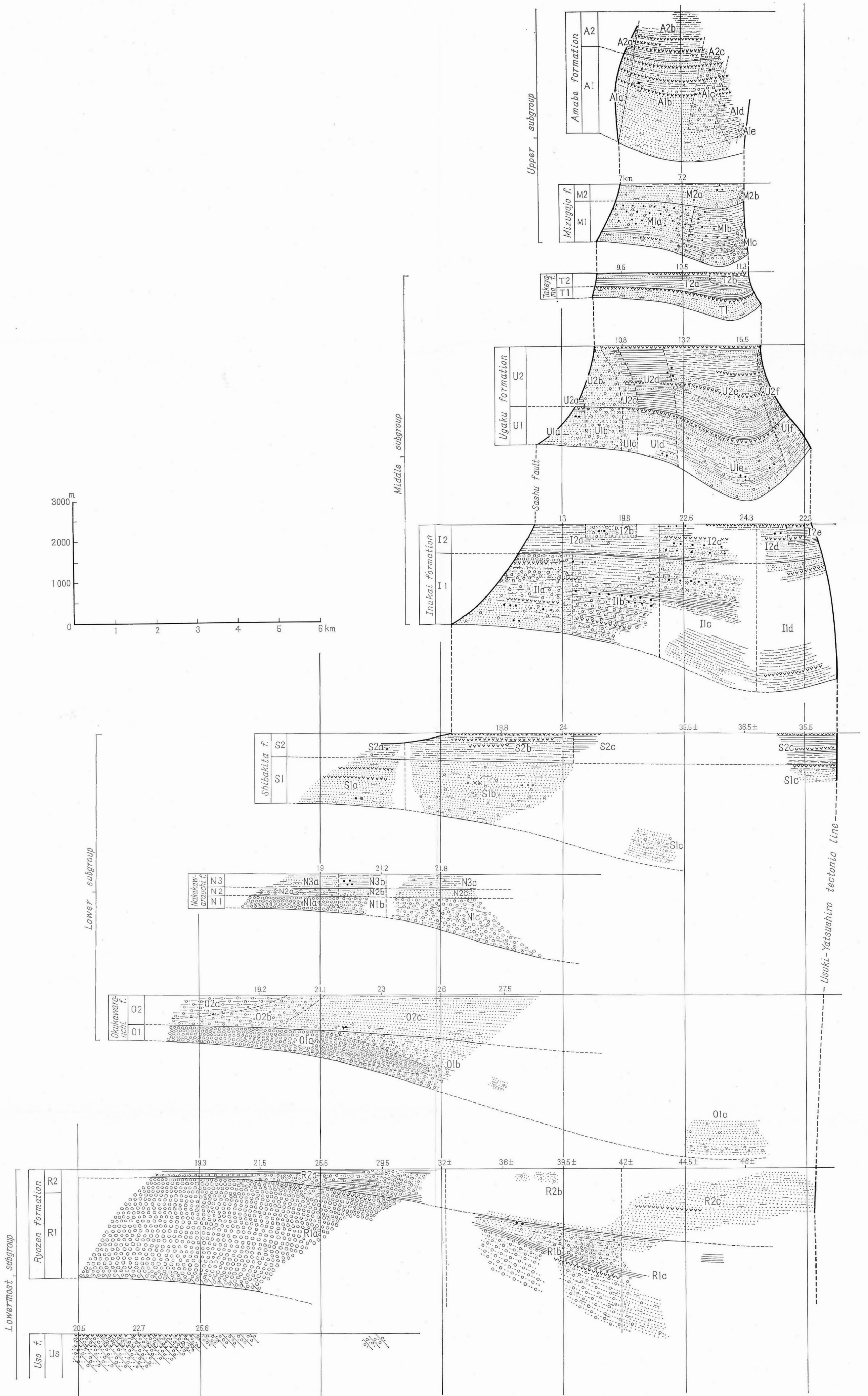


第10図 大野川盆地の構造区分図  
Map showing structural frame-work of the Onogawa Basin.



第17図 五ヶ瀬地域の地質図  
Geologic map of the Gokase area.



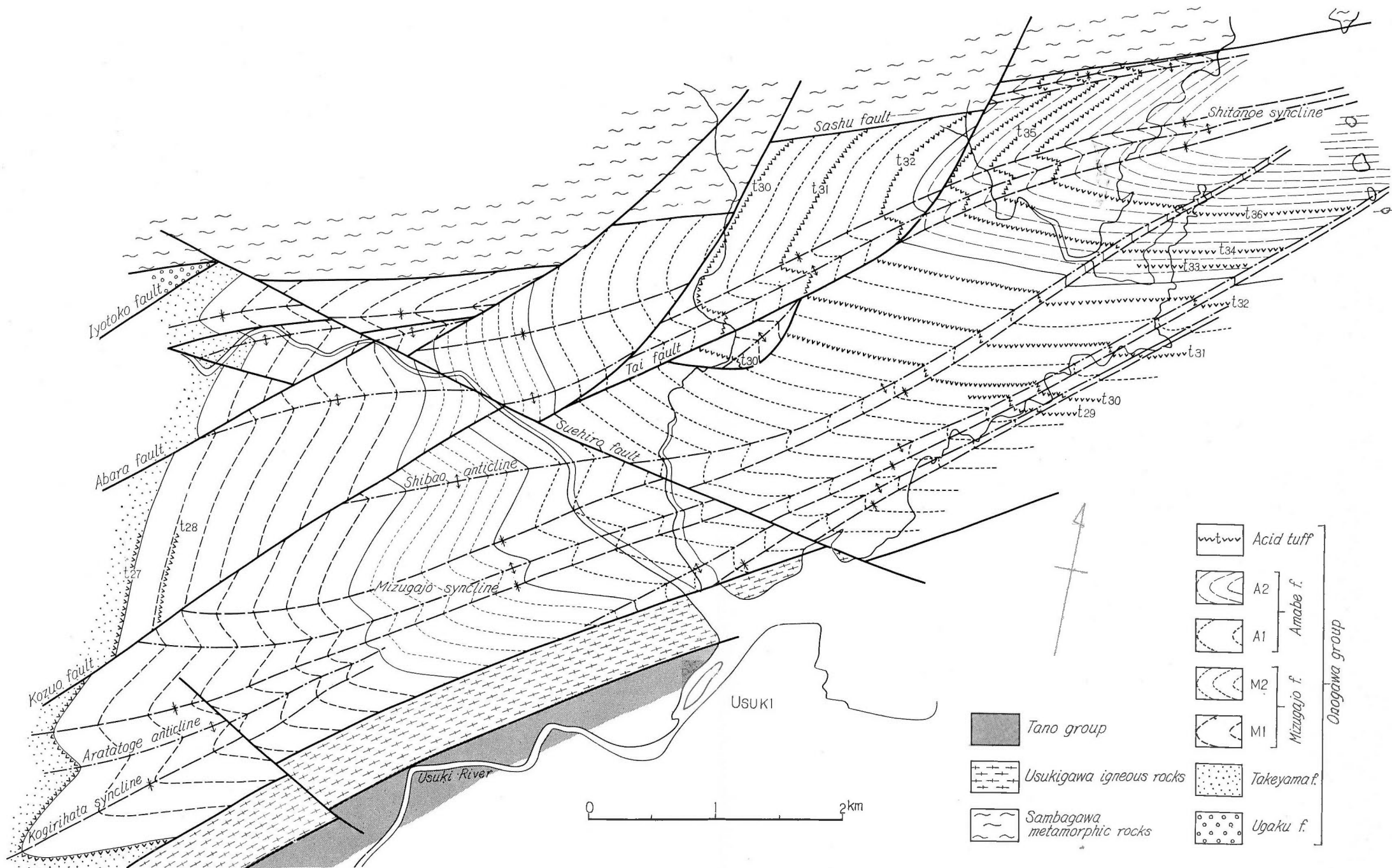


第18图 大野川層群層序断面图

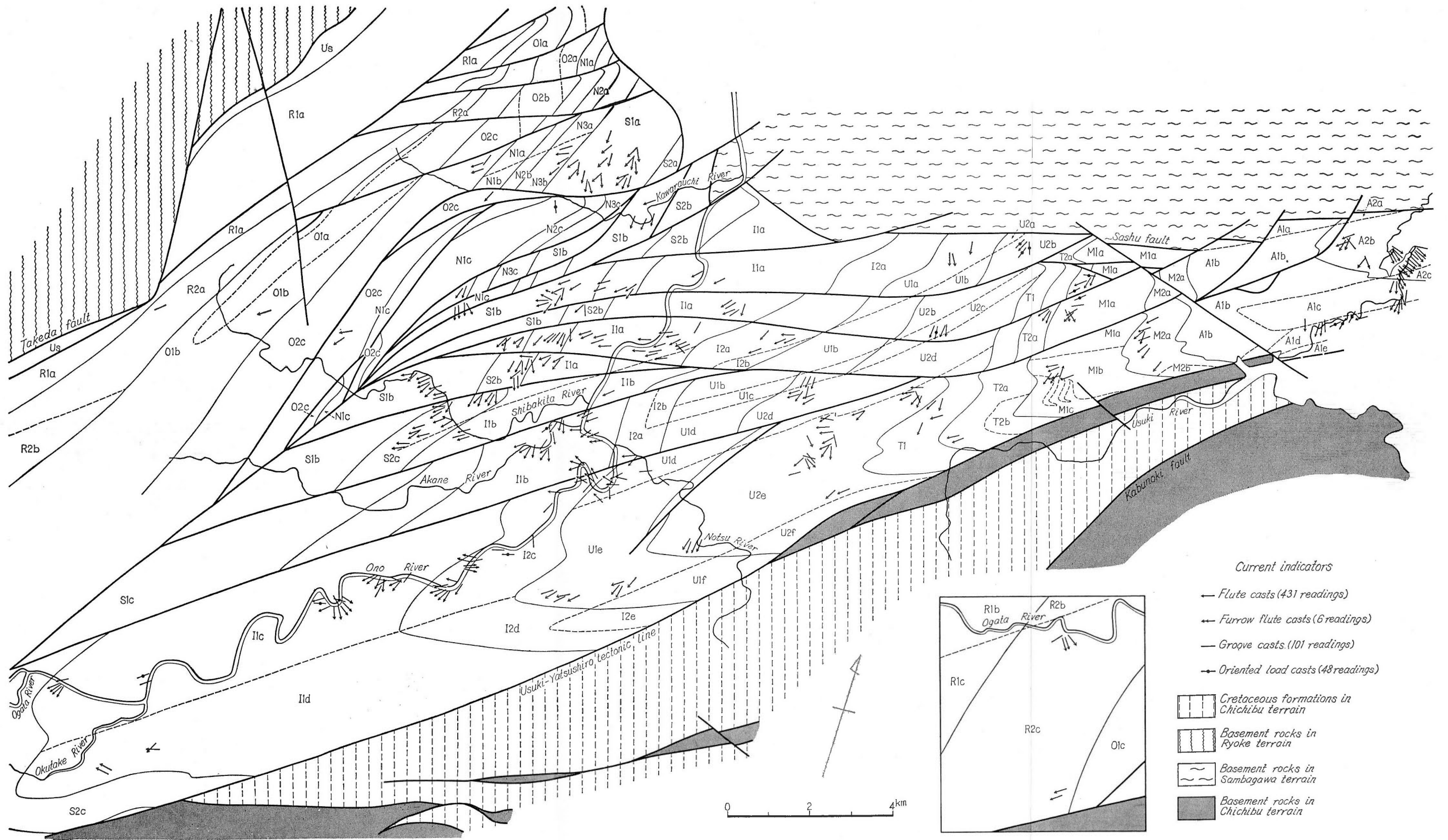
Stratigraphic sections of the Onogawa group (see Fig. 19). Legends same as in Fig. 4.



第25図 大野川上部亜層群の層相図  
Facies map of the Onogawa Upper subgroup.



第28図 大野川地溝帯東部の構造図  
 Structural map of the eastern part of the Onogawa graben.



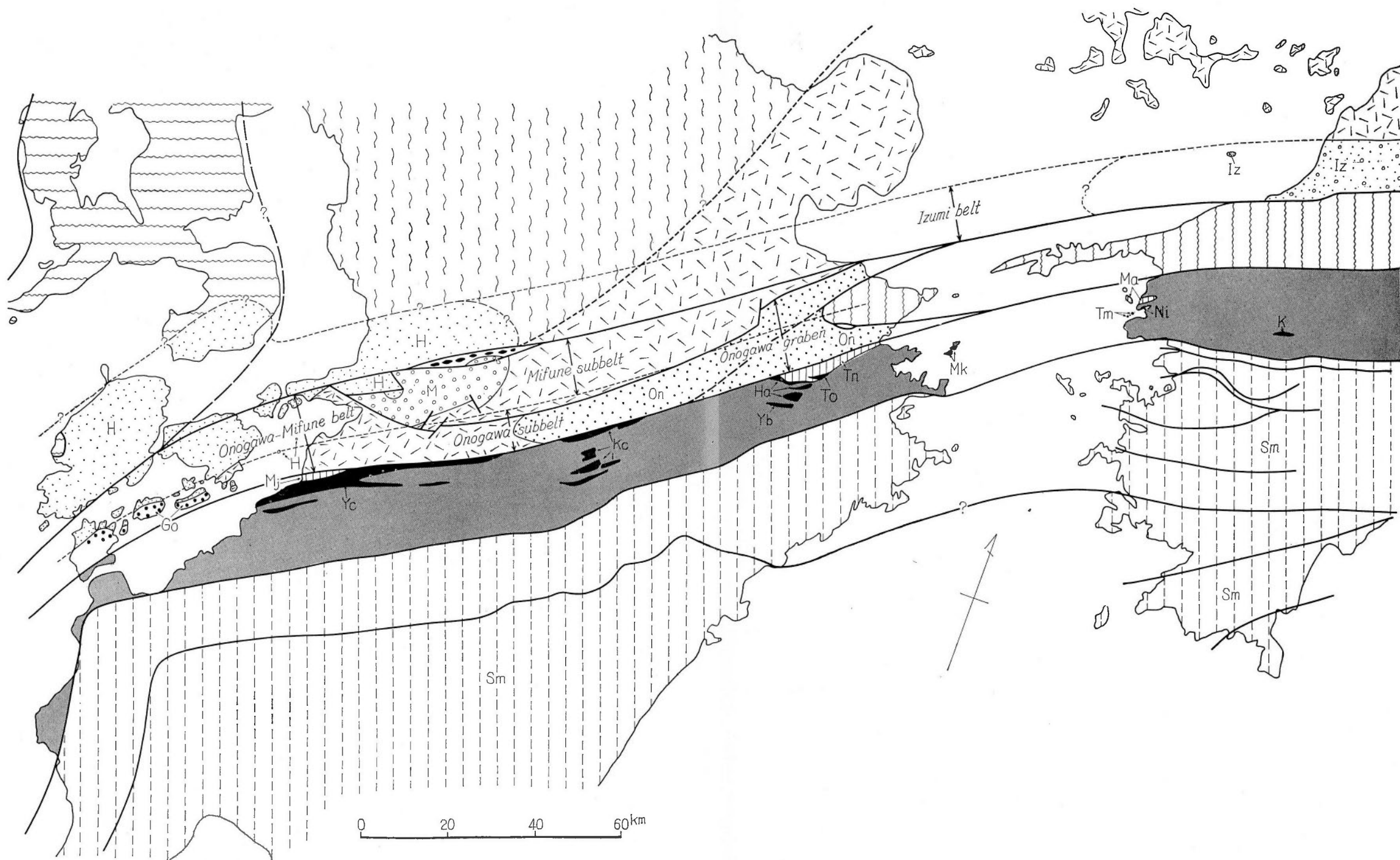
第39図 大野川層群における流向  
Map showing the current directions in the Onogawa group.



第 47 図 九州および四国西部の地体構造図

Tectonic map of Kyushu and west Shikoku.

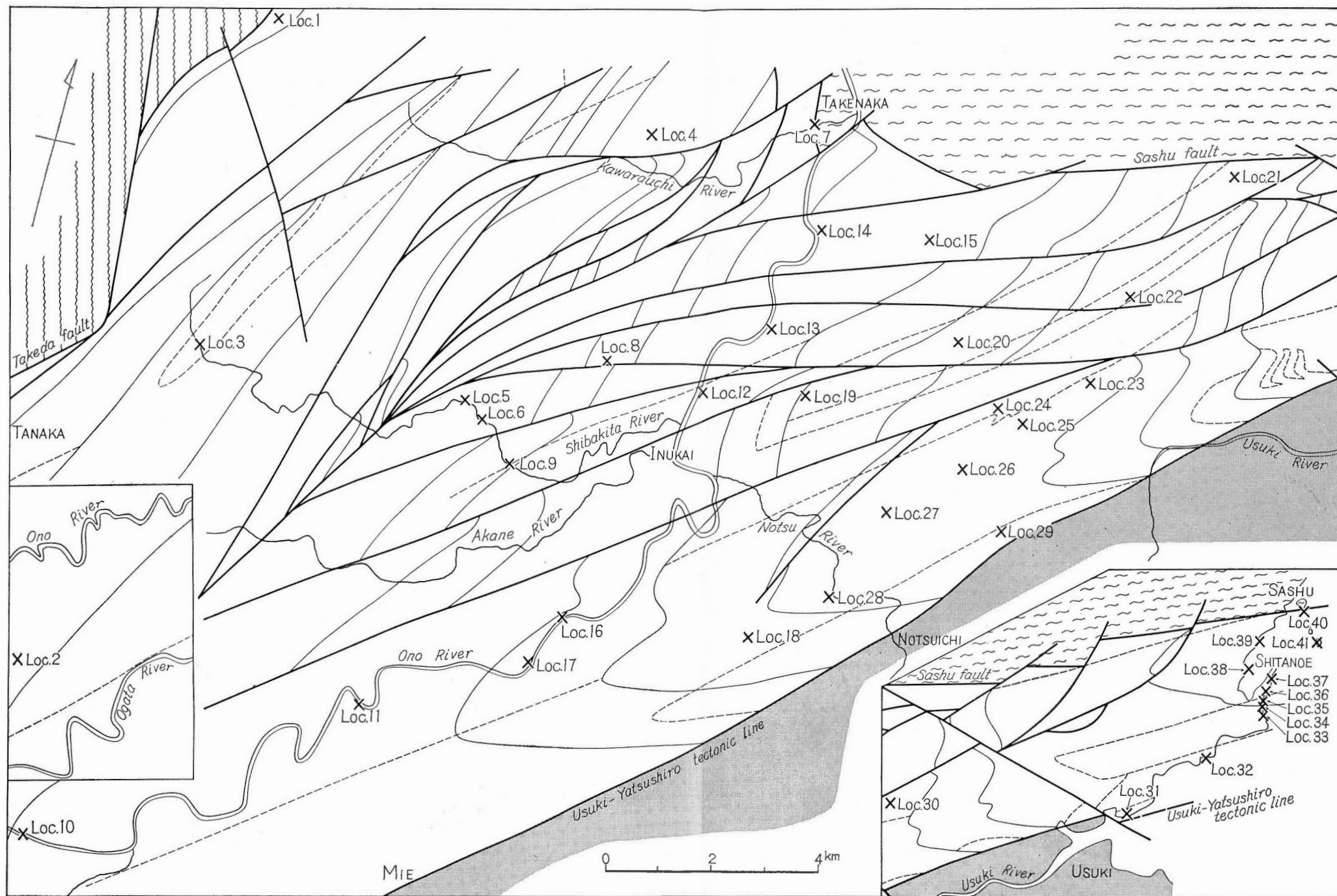
Rocks characteristic of each tectonic unit are as follows : I, Sangun metamorphic rocks ; II, Kiyama metamorphic rocks ; IIIa, Ryoke, Asaji, Higo, Manotani and Ryuhozan metamorphic rocks, and granitic rocks ; IIIb, Mizukoshi formation (Upper Permian) ; IVa, Sambagawa metamorphic rocks ; IVb, Nishikawauchi formation (Upper Permian ?) ; IVc, Nishikawauchi equivalent formation ; V, Sonoki metamorphic rocks ; VI, Paleozoic and Mesozoic formations ; VII, Shimanto supergroup (Upper Mesozoic~Lower Miocene).



第 48 図 九州および四国西部における白亜紀層の分布

Map showing the distribution of the Cretaceous formations in Kyushu and west Shikoku (see Fig. 47 and Table 6). Cenozoic coverings are stripped off in this figure.

Go, Goshonoura group (K3 $\beta$ ~K4 $\alpha$ ); M, Mifune group (K4); H, Himenoura group (K5~K6); On, Onogawa group (K4~K5 $\beta$ ); Iz, Izumi group (K5 $\gamma$ ~K6); Yc, Kawaguchi, Hachiryuzan, Hinagu, Yatsushiro and Tomochi formations (K1~K3); Mj, Miyaji formation (K4 $\alpha$ ); Kc, Oishi, Takayasan, Togawa, Kasabe, Shibanomoto, Takahata and Tabaru formations (K1~K3, K4?); Yb, Yamabu formation (K1); To, Ochidani and Tamarimizu formations (K2?~K3 $\alpha$ ); Ha, Haidateyama group (K3 $\beta$ ); Mk, Mukujima formation (K3 $\beta$ ); Tn, Tano group (K4); Ni, Nigyu formation (K3 $\alpha$ ?); Tm, Takashima formation (K3 $\beta$ ?); Ma, Maana formation (K4?); K, Kikunotani formation (K2 or K3); Sm, Shimanto supergroup (Upper Mesozoic~Lower Miocene).



第 49 図 図および図版に示されている露頭の位置図  
 Map showing the localities of the outcrops illustrated in the text-figures and plates.