

Fig. 1 Distribution of the Basalts in Northwest Kyushu belongs to the Circum-Japan Sea alkali rock province, and several volcanoes are shown by stippled area.

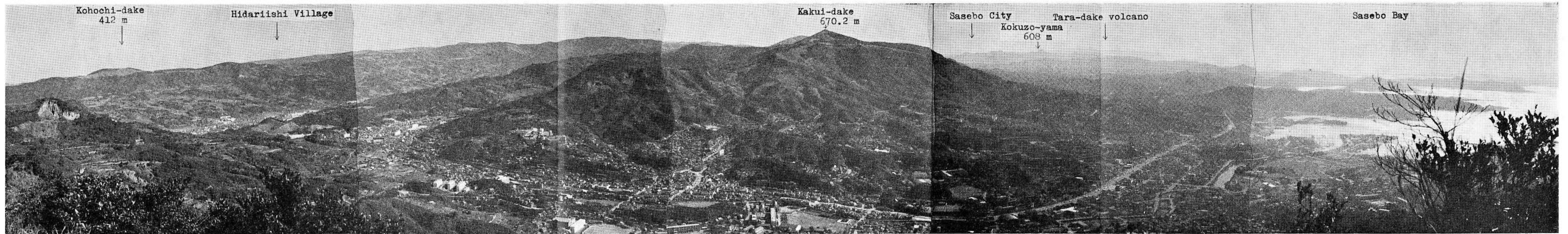


Photo. 1 The Kita-matsuura basalt plateau as seen from Yumihari-dake (382 m) in Sasebo City.

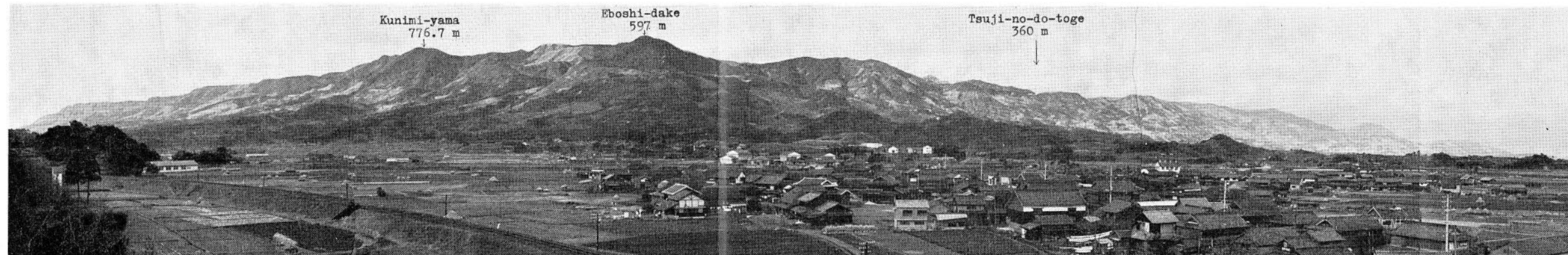


Photo. 2 The eastern cliff of the Kita-matsuura basalt plateau as seen from the southwestern part of Imari City, Saga Prefecture.

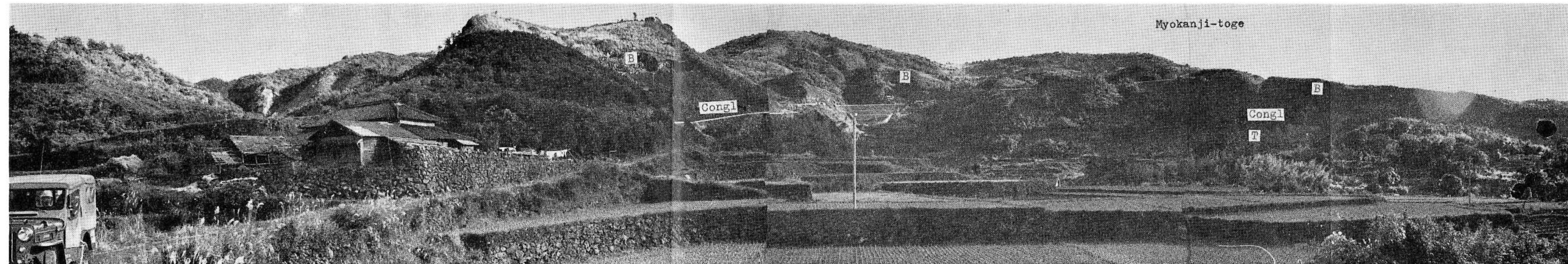


Photo. 11 The photograph shows the topography of the landslide around Myokanji-toge, north of Sasebo City. The Kita-matsuura district is frequented by landslides everywhere, resulting in fresh outcrops one after another such as this landslide of 1962 to recent.

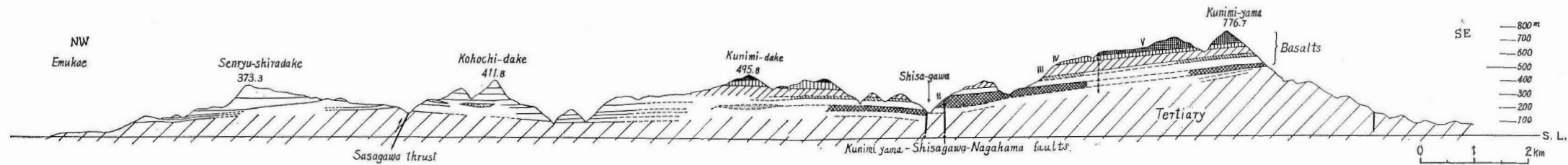


Fig. 9 Section of the Kita-matsuura district.



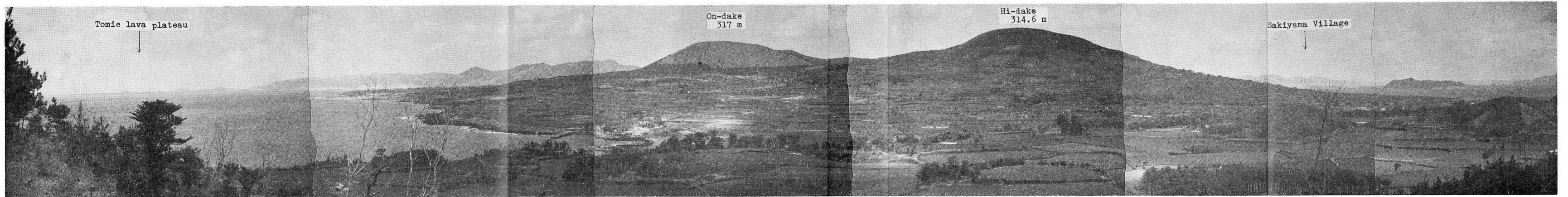


Photo. 19 The photograph shows the topography of the cinder cones of On-dake and Hi-dake, and Tomie lava plateau as seen from Usu-dake of Fukué-jima.



Photo. 23 Ojika-jima Islands and other islands as seen from Shiroga-dake of Uku-shima, Goto Islands.

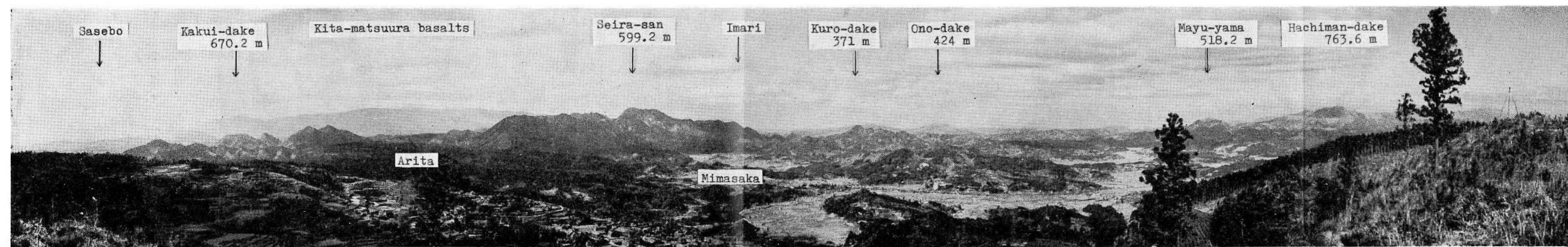


Photo. 26 The photograph shows the topography of the volcanic field around the Kita-matsuura basalts as seen from Jinroku-yama, Saga Prefecture.