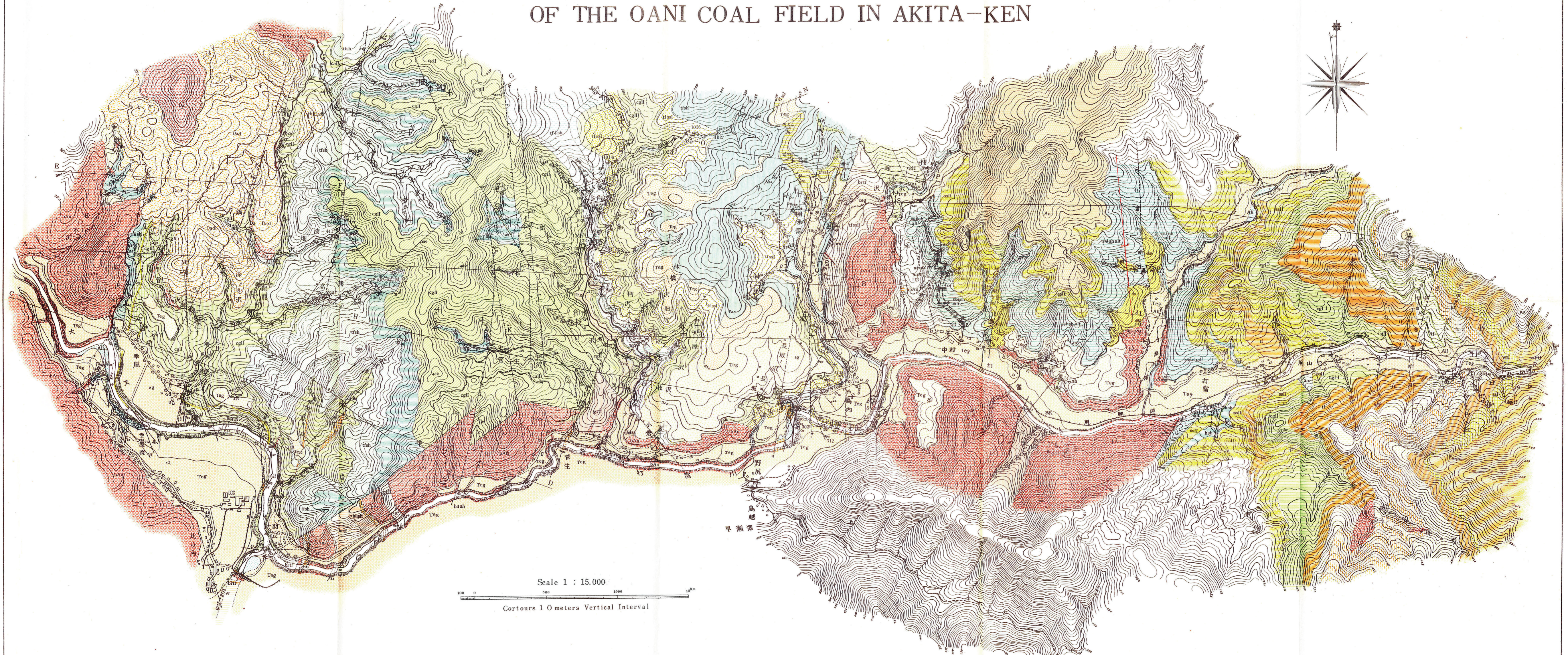


# 秋田県大阿仁炭田地形及地質図 THE TOPOGRAPHICAL AND GEOLOGICAL MAP OF THE OANI COAL FIELD IN AKITA-KEN



Scale 1 : 15,000  
Contours 10 meters Vertical Interval

火成岩類 Igneous rocks

- baAn** 玄武岩質安山岩・集塊岩 Basaltic andesite and its agglomerate
- lip** 石英粗面岩 (Liparite)
- Da** 石英安山岩 Dacite
- paAn** 真珠岩質安山岩 Perlitic andesite
- An** 森吉山礫岩 Mori-yoshiyama (Dacitic detritus)
- DaD** 石英安山岩質砂岩 Sandstone with layers of andesite and shale
- Teg** 高位階段堆積層 Terrace deposits of high level
- Tes** 中位階段堆積層 Terrace deposits of middle level
- Teo** 低位階段堆積層 Terrace deposits of low level
- Fan** 扇狀堆積層 Fan deposits
- All** 沖積層 Alluvial deposits

- 不整合 Unconformity
- 石炭露頭 Outcrop of coal
- 炭層 Coal seam
- 正断層 Normal fault
- 背斜軸 Anticlinal axis
- 走向傾斜 Strike and dip
- 20°
- 水平層 Horizontal bed
- 地層ノ擾乱地帯 Contorted zone
- 化石植物化石産地 Locality of fossil mollusca and plants
- 冷泉 Cold spring

下部緑色凝灰岩層 (双六階) Lower green tuff formation (Sugoroku stage)

- grtf** 緑色凝灰岩 (Green tuff)
- br if** 角礫質凝灰岩 Brecciated tuff
- tf sll** 灰綠色凝灰質砂岩 (含細粒礫岩) Gray-green tuffaceous sandstone (with fine conglomerate beds)
- grtf** 緑色凝灰岩 (Green tuff)
- sh t. m** 緑色凝灰質砂岩及頁岩 (含煤層) Green tuffaceous sandstone and shale (with coal seams)
- ha sh** 硬頁岩 (含凝灰質砂岩) Hard shale (with tuffaceous sandstone beds)
- cgl II** 礫岩 (含砂岩・頁岩) Conglomerate with layers of sandstone and shale

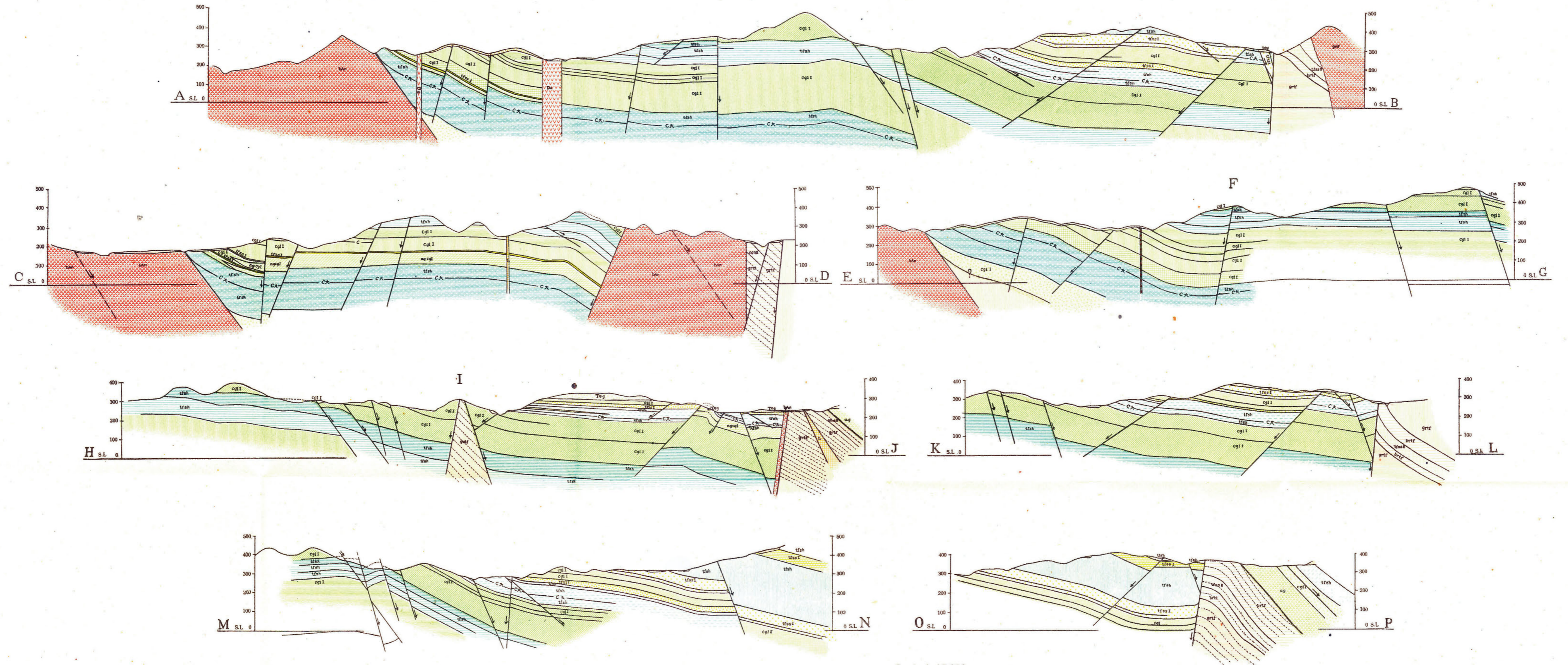
大阿仁炭層 (台島階) (北区内地区) Ōani coal-bearing formation (Daijima stage) (Hitachinai district)

- cgl I** 礫岩 Conglomerate
- tf sh** 凝灰岩・頁岩 Tuff and shale
- cgl II** 礫岩 Conglomerate
- cgl-I** 礫岩 (含砂岩) Conglomerate divided into two belts by a coal seam
- tf-sh** 凝灰質頁岩 Tuffaceous shale divided into two belts by a coal seam
- cgl-I** 礫岩 Conglomerate divided sometimes into two belts by a coal seam
- tf sh** 凝灰岩・頁岩 Tuff and shale
- tf sh** 凝灰質頁岩 (含細粒礫岩) Gray-green tuffaceous sandstone (with fine conglomerate beds)
- tf sh** 凝灰質頁岩 (含凝灰質砂岩) Gray-green tuffaceous sandstone (with tuffaceous sandstone beds)
- tf sh** 凝灰質頁岩 (含砂岩) Gray-green tuffaceous sandstone (with fine conglomerate beds)
- tf sh** 凝灰質頁岩 (含砂岩) Gray-green tuffaceous sandstone (with fine conglomerate beds)
- tf sh** 凝灰質頁岩 (含砂岩) Gray-green tuffaceous sandstone (with fine conglomerate beds)
- tf sh** 凝灰質頁岩 (含砂岩) Gray-green tuffaceous sandstone (with fine conglomerate beds)

大阿仁炭層 (台島階) (中村地区) Ōani coal-bearing formation (Daijima stage) (Nakamura district)

- ag** 角礫集塊岩 Agglomerate
- sh** 頁岩・砂岩 (頁岩ノ砂岩ニ移化) Shale and sandstone (shale occasionally changes to sandstone)
- sh alt** 砂岩頁岩互層 Alternation of sandstone and shale
- sh** 砂岩 (含緑色凝灰岩・硬頁岩及礫岩) Sandstone (with green tuff, hard shale and conglomerate beds)
- cgl I** 礫岩 Conglomerate
- if** 淡緑色凝灰岩 (含植物化石) Light green tuff (containing plant remains)
- tf** 淡緑色凝灰岩 (含礫岩層) Light green tuff (with conglomerate beds)
- cgl** 礫岩 Conglomerate
- br if** 角礫質凝灰岩 Brecciated tuff
- grtf** 緑色凝灰岩 Green tuff
- sh** 砂岩 (薄頁岩ヲ挟ム) Sandstone (with thin shale layers)
- sh** 灰綠色凝灰質砂岩 (含薄頁岩頁岩) Gray-green tuffaceous sandstone (with intercalated thin coaly shale layers)

### 比立内地区地質断面図

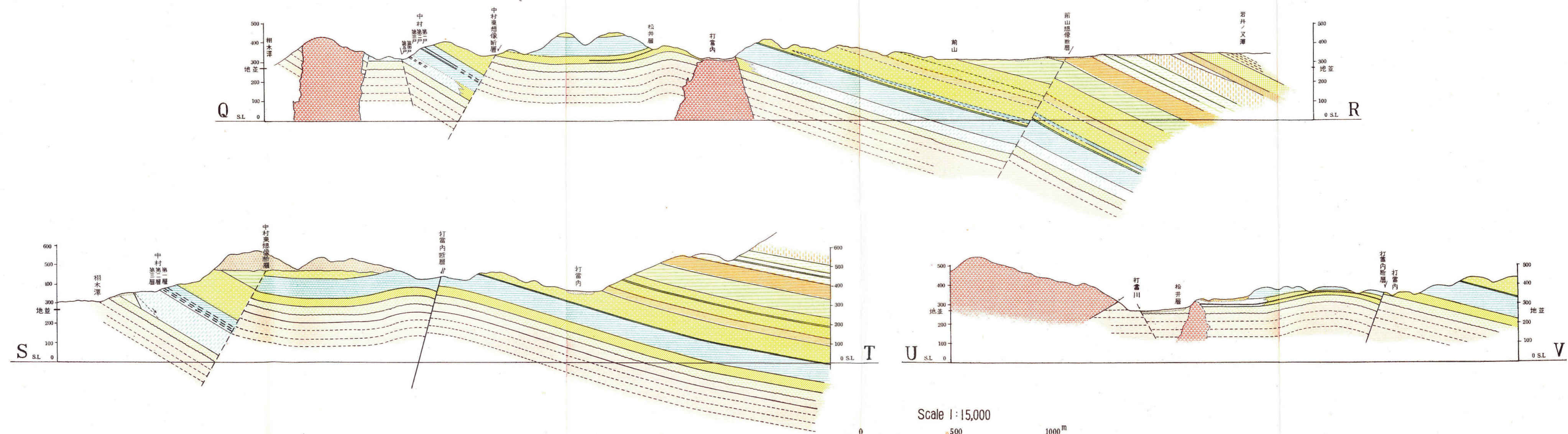


Scale 1:15,000



地質調査 技官 竹原平一      地形測量 技官 山田千箱  
 技官 松井 寛              技官 山屋政美

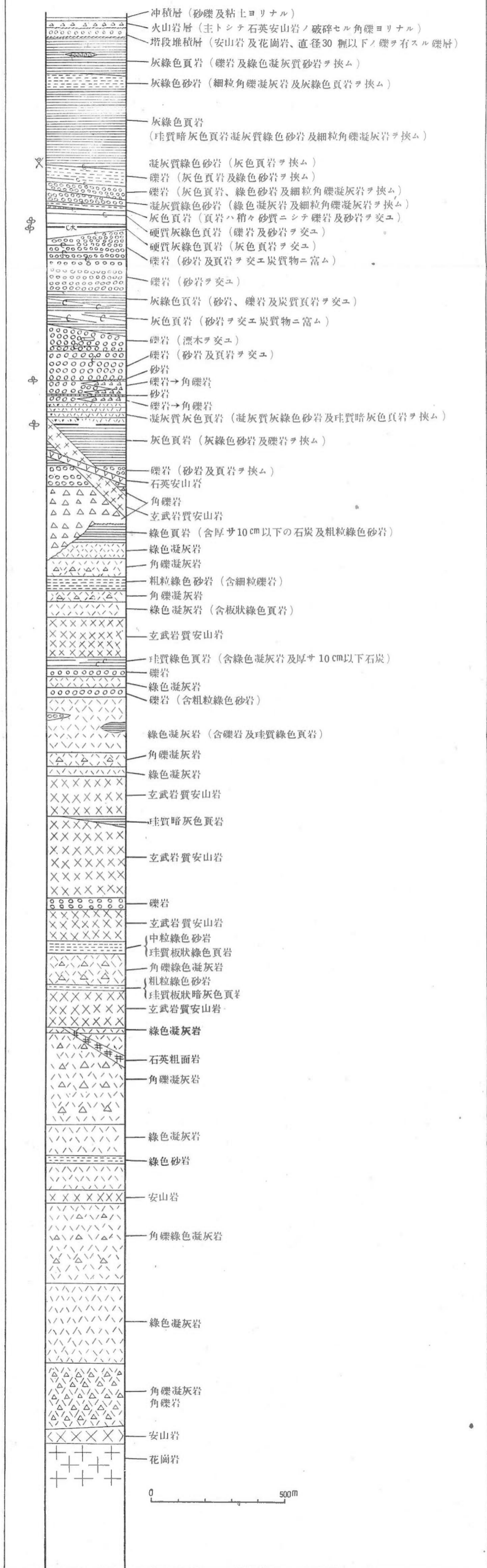
### 中村地区地質断面図



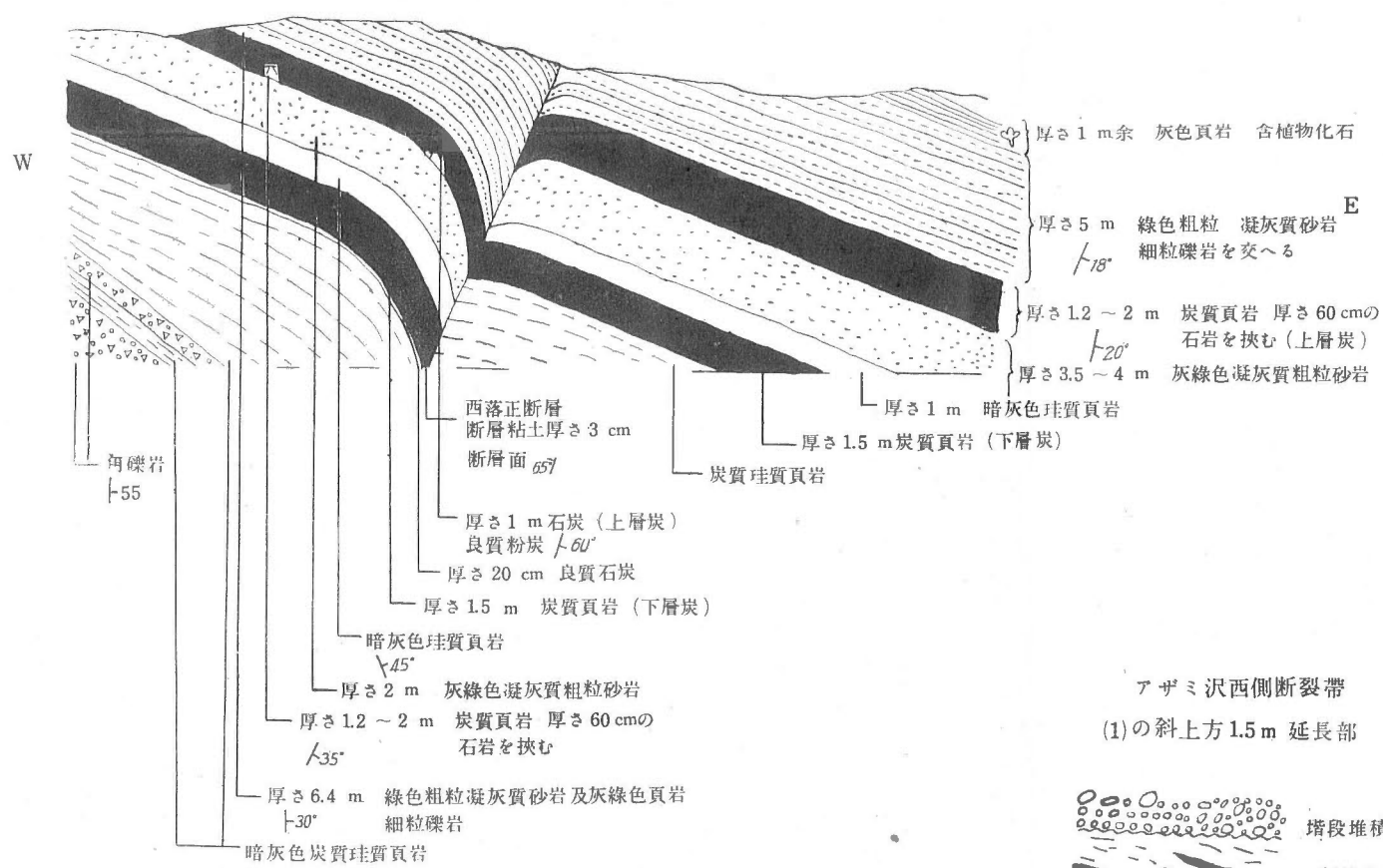
地質調査 技官 竹原平一  
 技官 松井 寛

地形測量 技官 山田千穂  
 技官 山屋政美

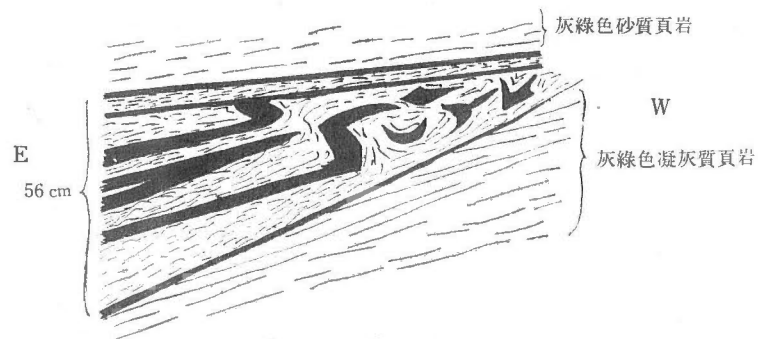
大阿仁炭田比立内地区模式柱状図



打當川右岸の崖、長坂石炭露頭及此を切る西落正断層 (小)

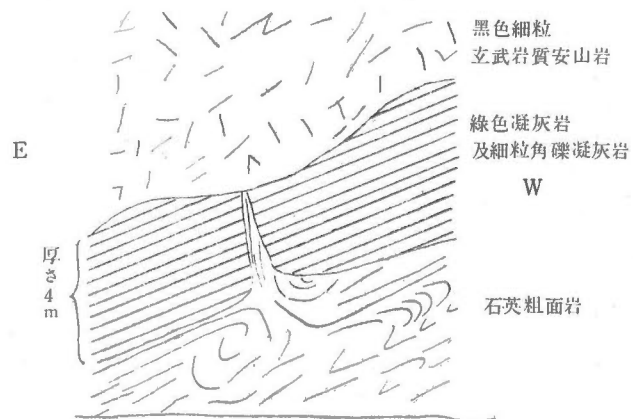


小倉沢旧坑と小倉沢茅ノ露頭との中間に於いて旧坑口露頭の石炭より 4.5 m 下位の石炭は低角度の断層に依って切断されて居る。其ために石炭層は乱れ西方に向って尖滅して居る。断層面は多少凹凸があるが 55° の面である。

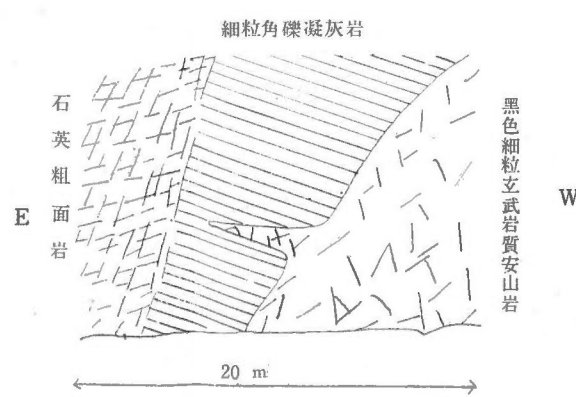


羽立と管生との打當る岸に見られる安山岩石英粗面岩及綠色凝灰岩との関係

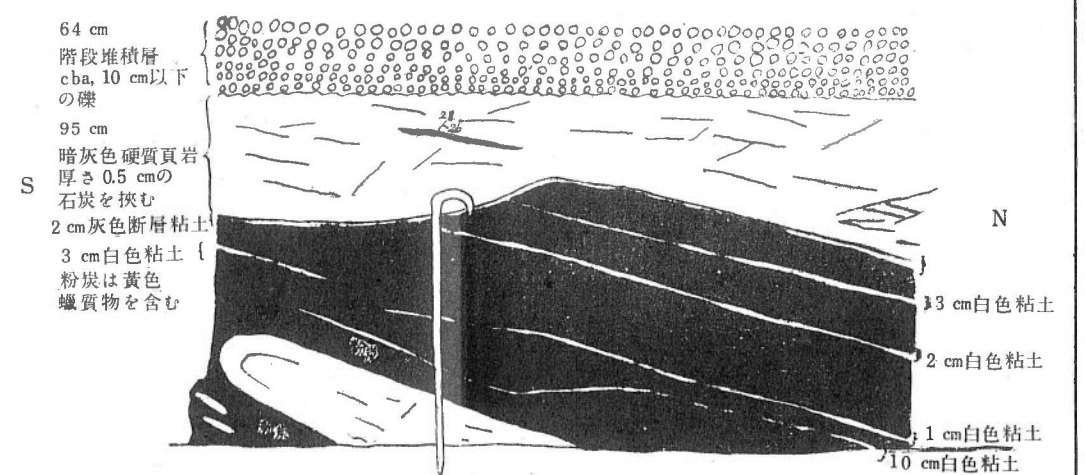
(1) 南岸崖



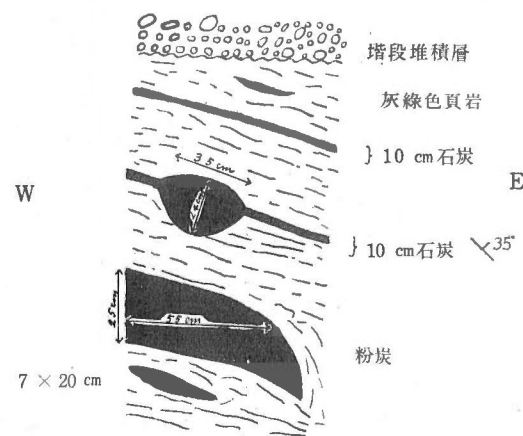
(2)



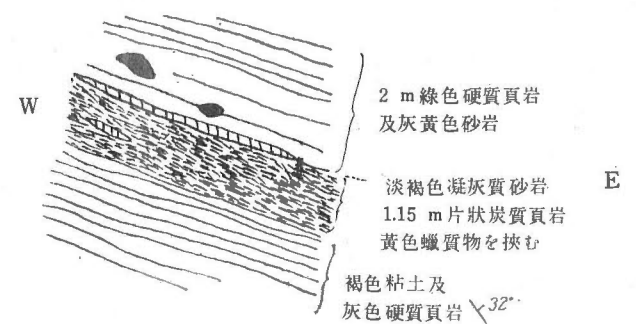
中村地区アザミ沢西側の肩崩し露頭断層帯(1)



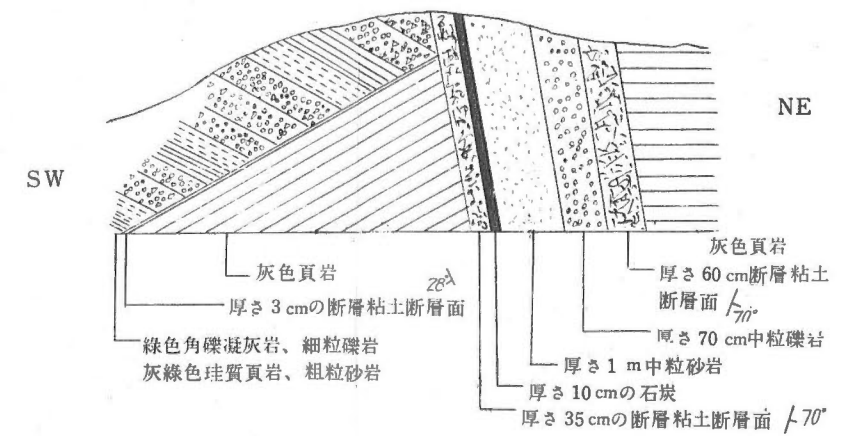
アザミ沢西側断層帯 (1)の斜上方1.5 m 延長部



アザミ沢西側断層帯 (1)の10 m 上位延長部

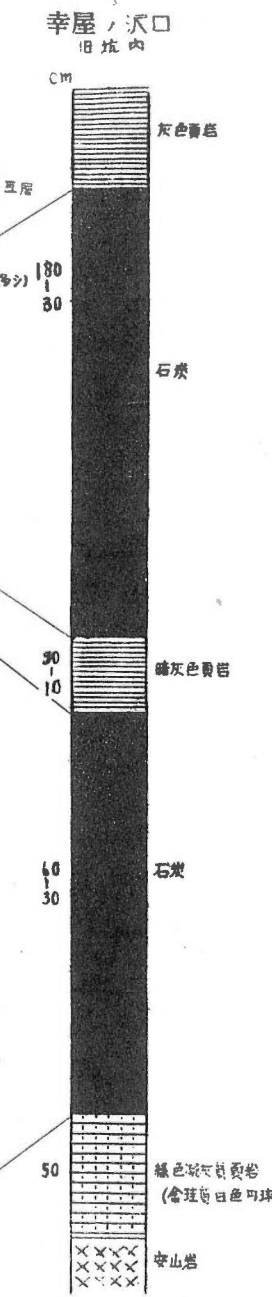
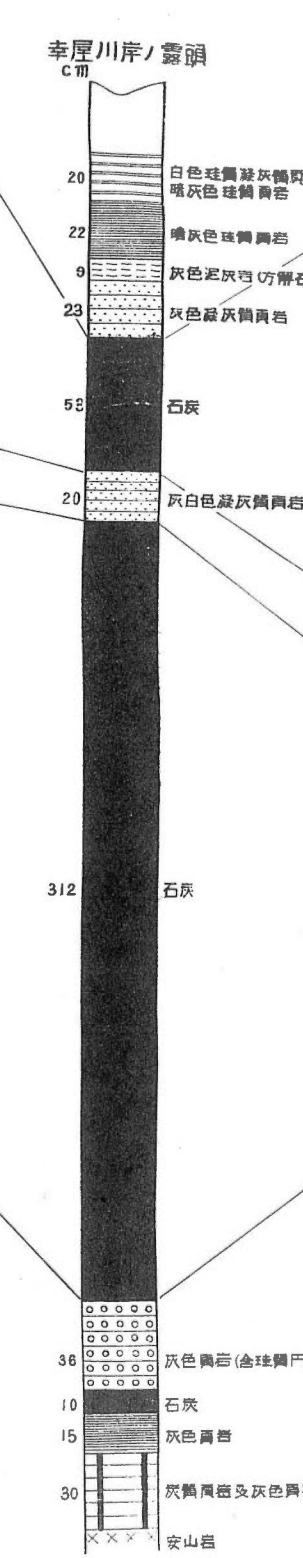
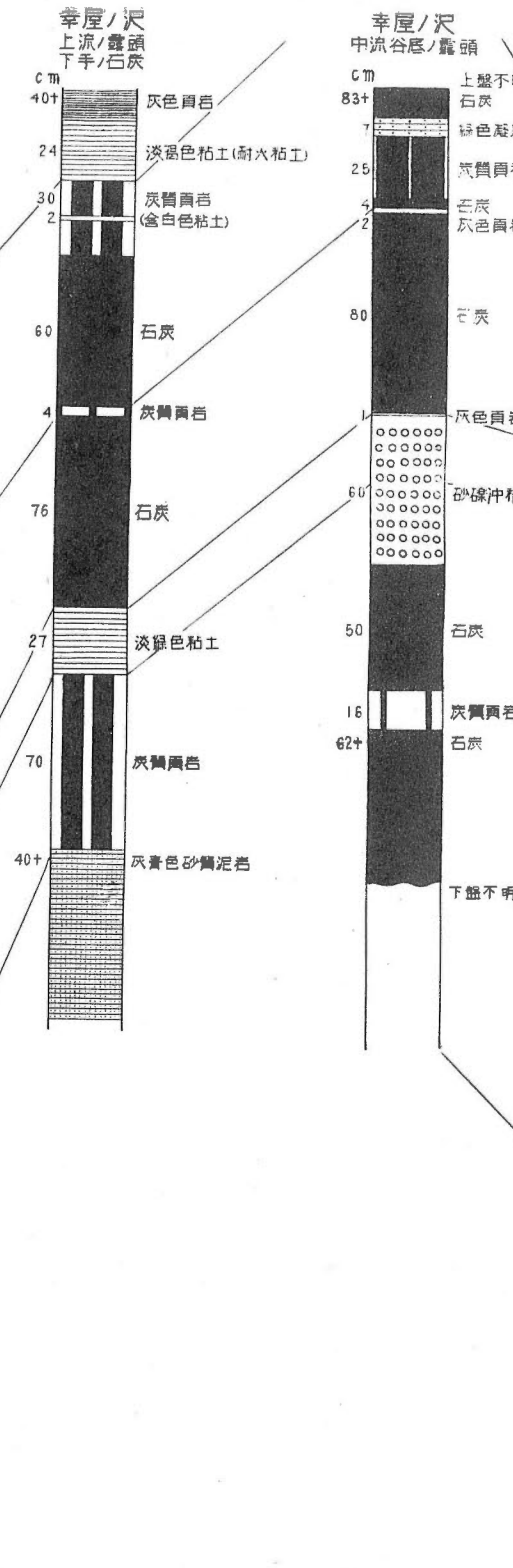
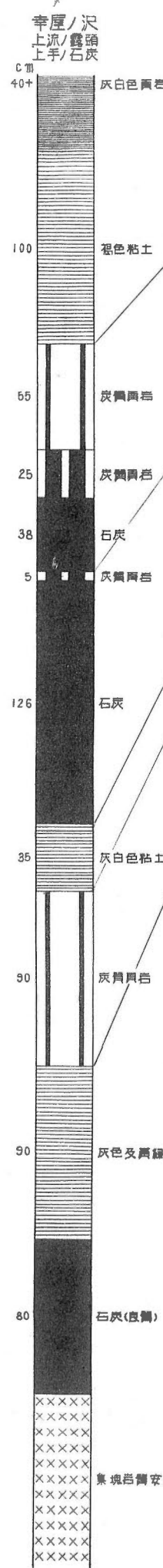
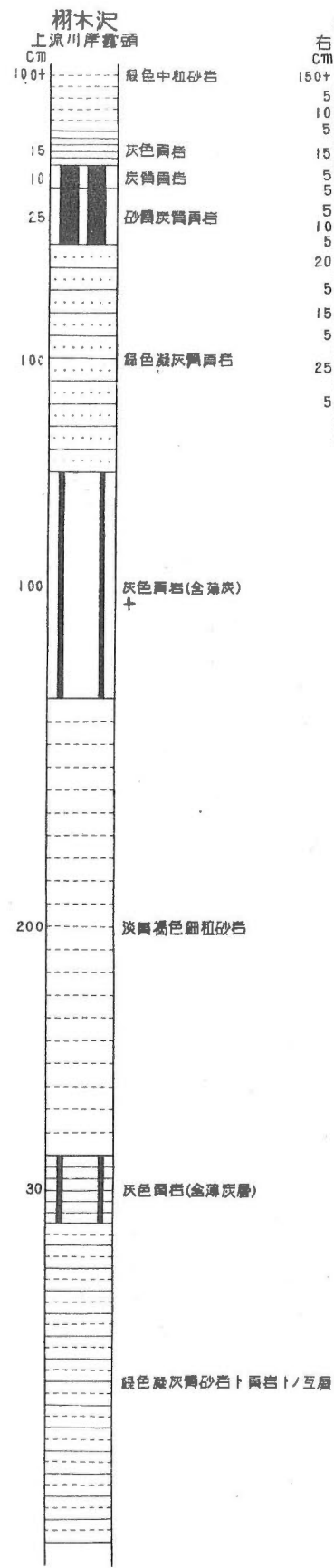
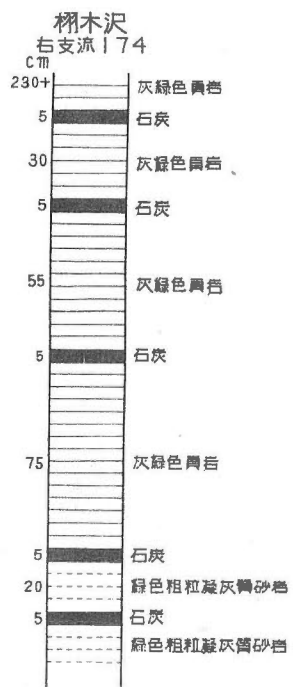
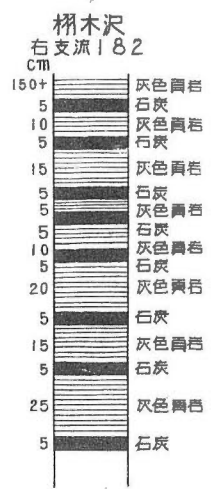
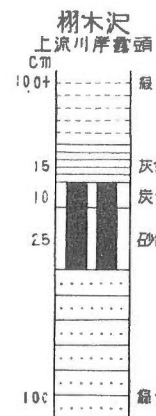
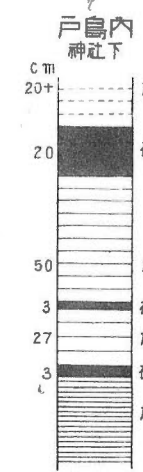


佐山東方の夾炭層中の断層交叉

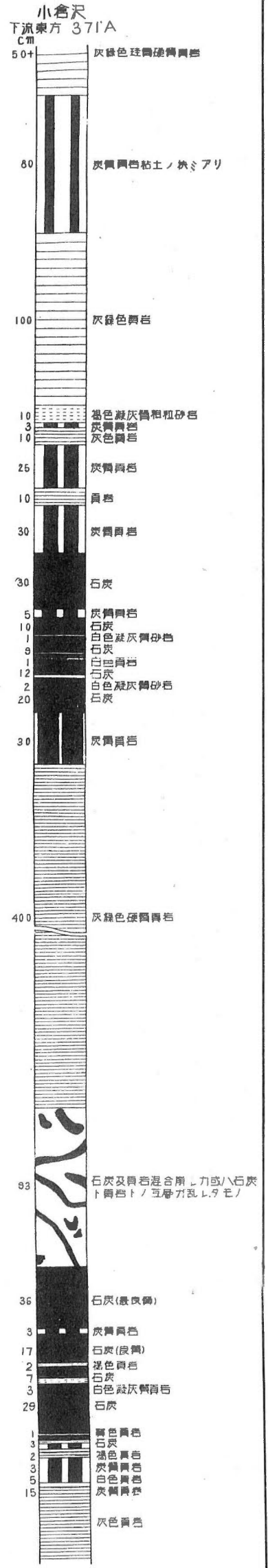
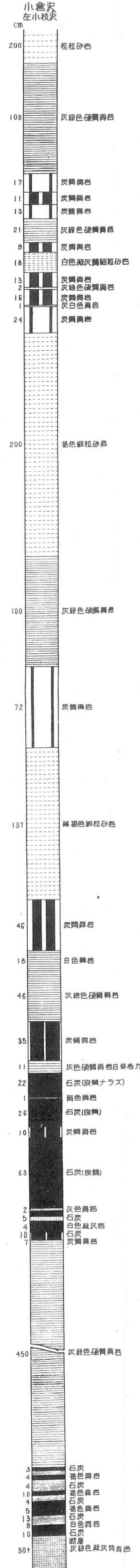
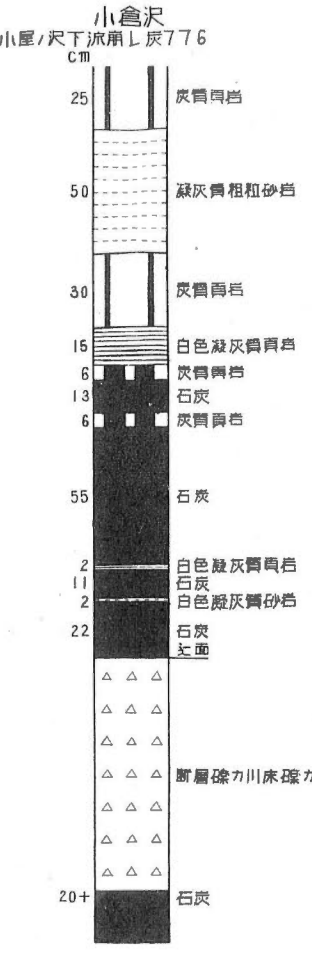
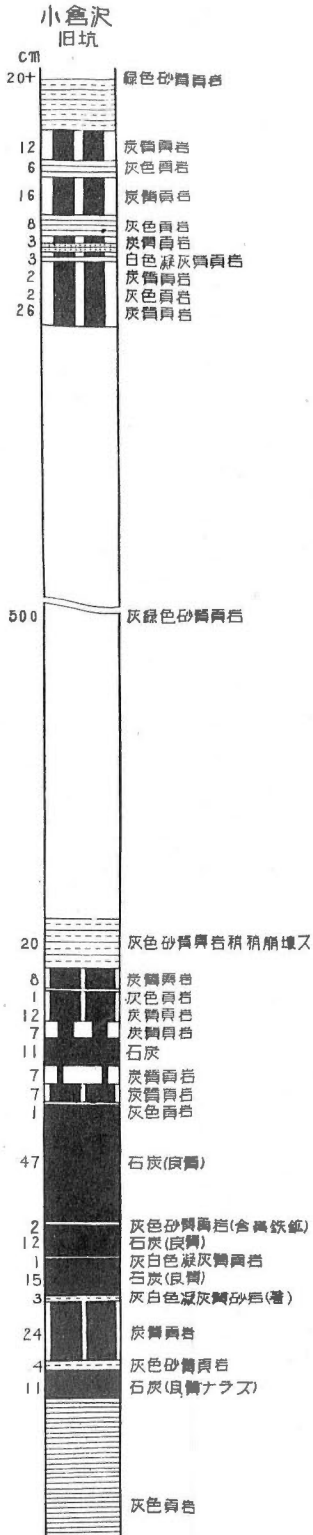
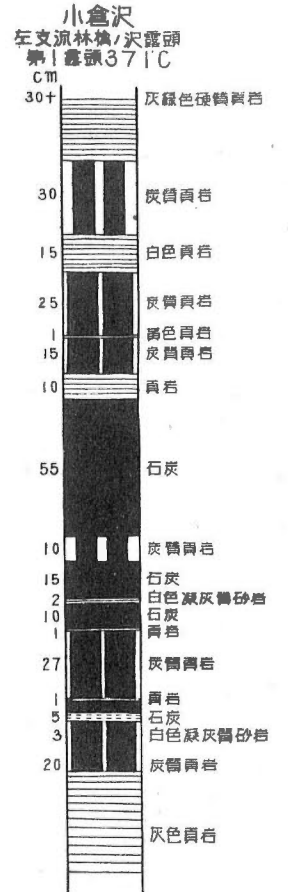
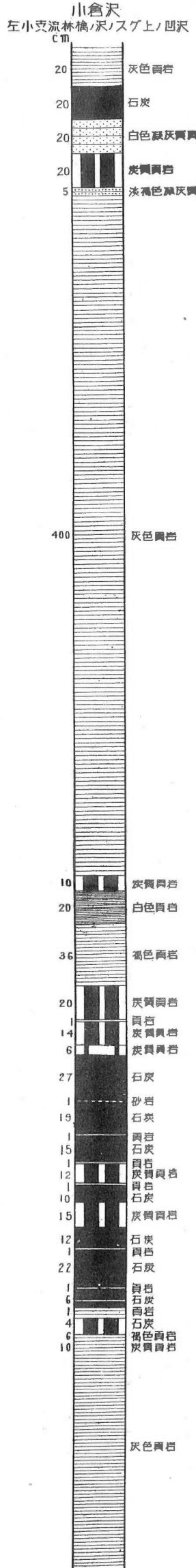


各地ノ炭層

下部炭層群幸屋炭層



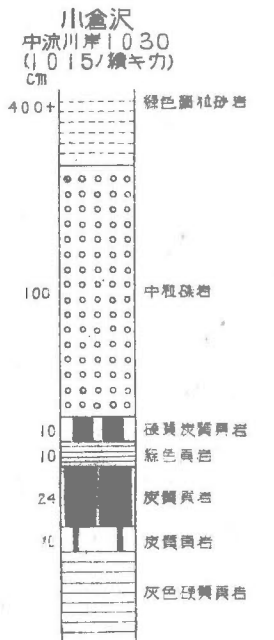
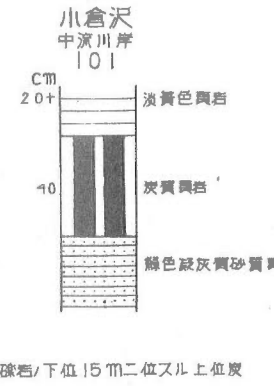
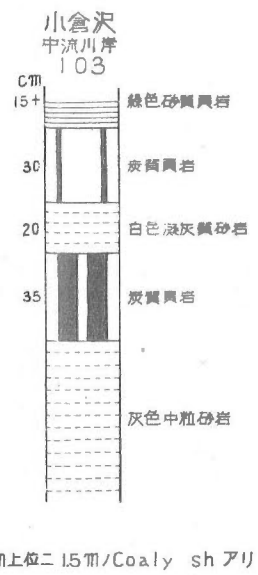
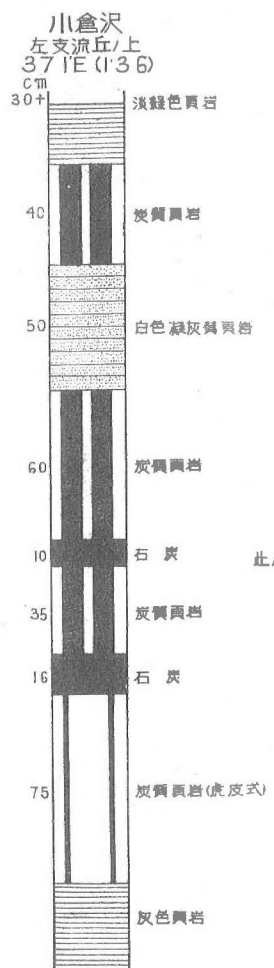
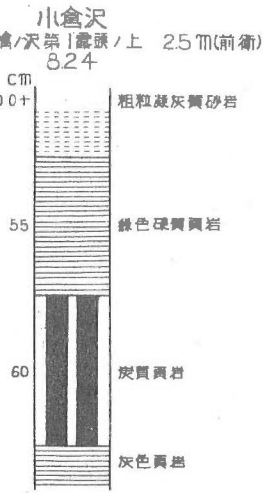
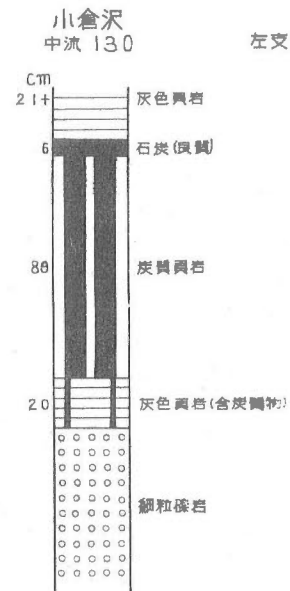
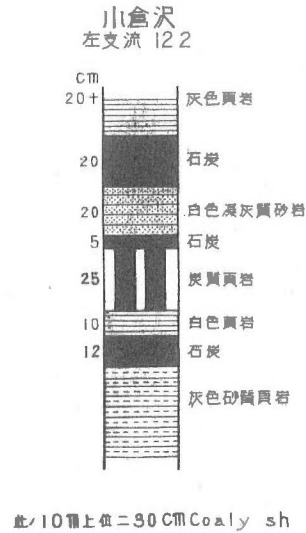
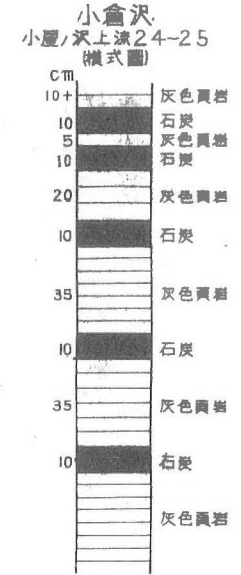
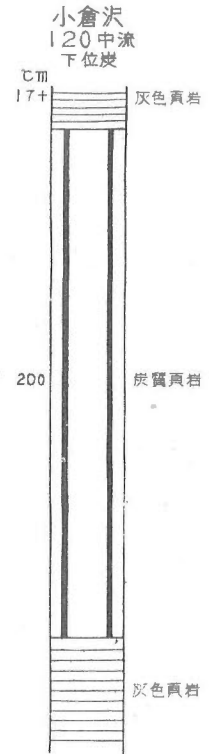
# 上部炭層群小倉沢炭層







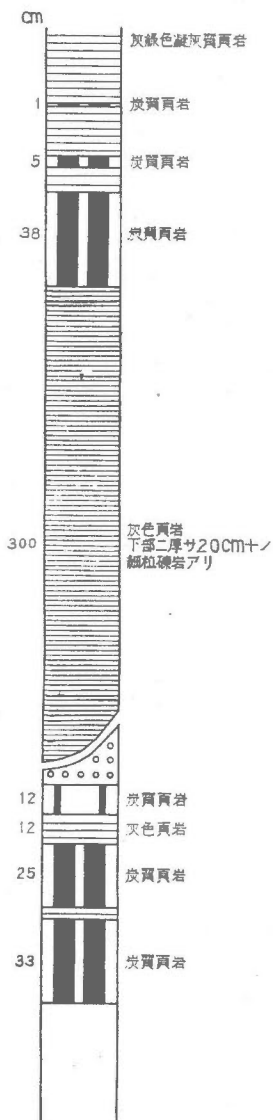
上部炭層群小倉沢炭層



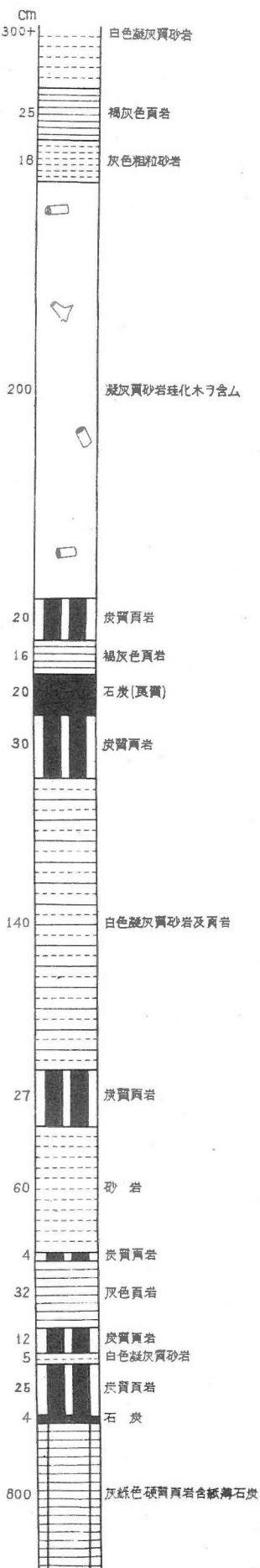


# 各地ノ炭層

熊高ノ沢  
ヨリ佐山へ抜ケル道路  
481



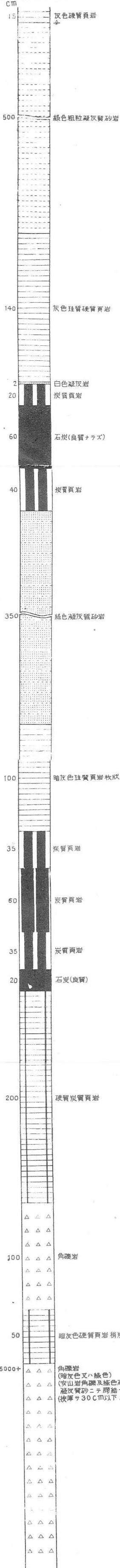
熊高ノ沢  
上流第2南枝沢ノ石炭  
537



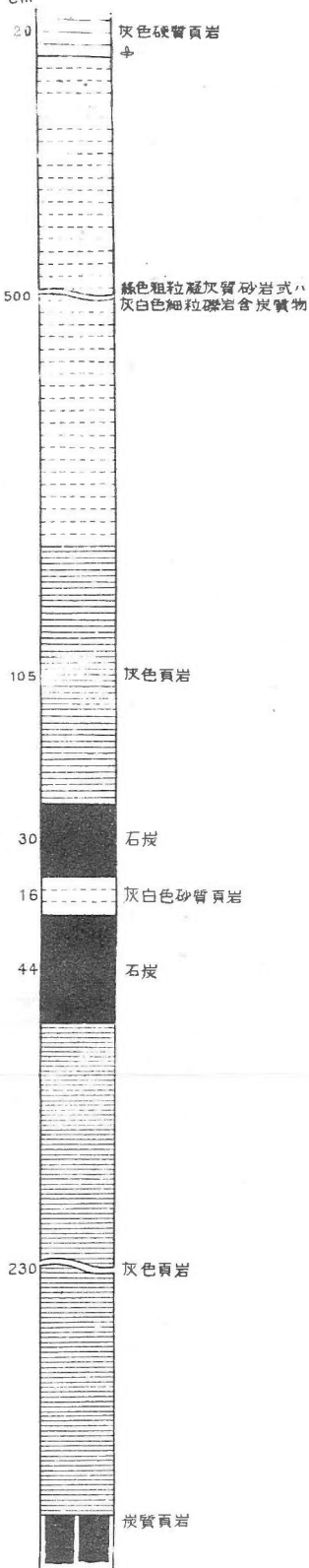


# 各地ノ炭層

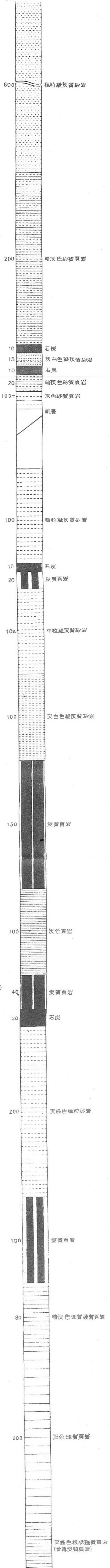
打当川岸  
長坂旧坑  
227, 228 地層乱れ居ルが故ニ  
數ヶ所ノ露頭ヲ組立タリ



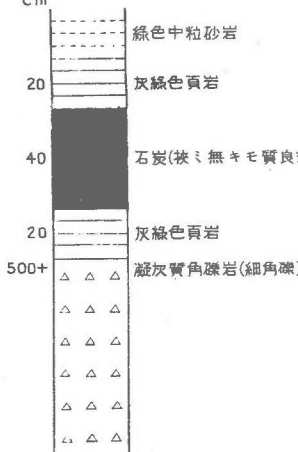
打当川岸  
長坂ノ露頭道路側の上炭



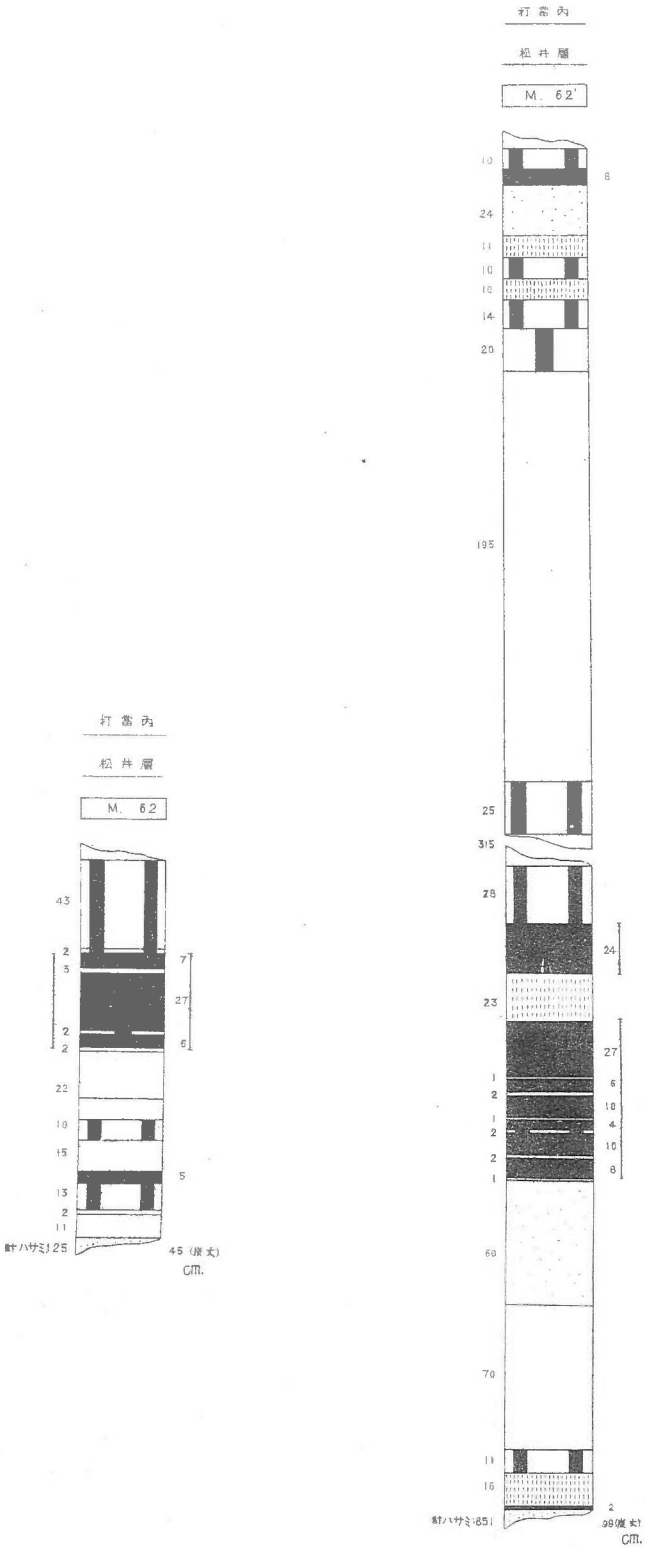
打当川岸  
(野尻寄リ)  
長坂ノ石炭上炭



長坂ノ沢  
上炭層ヨリ上ノモノ 238

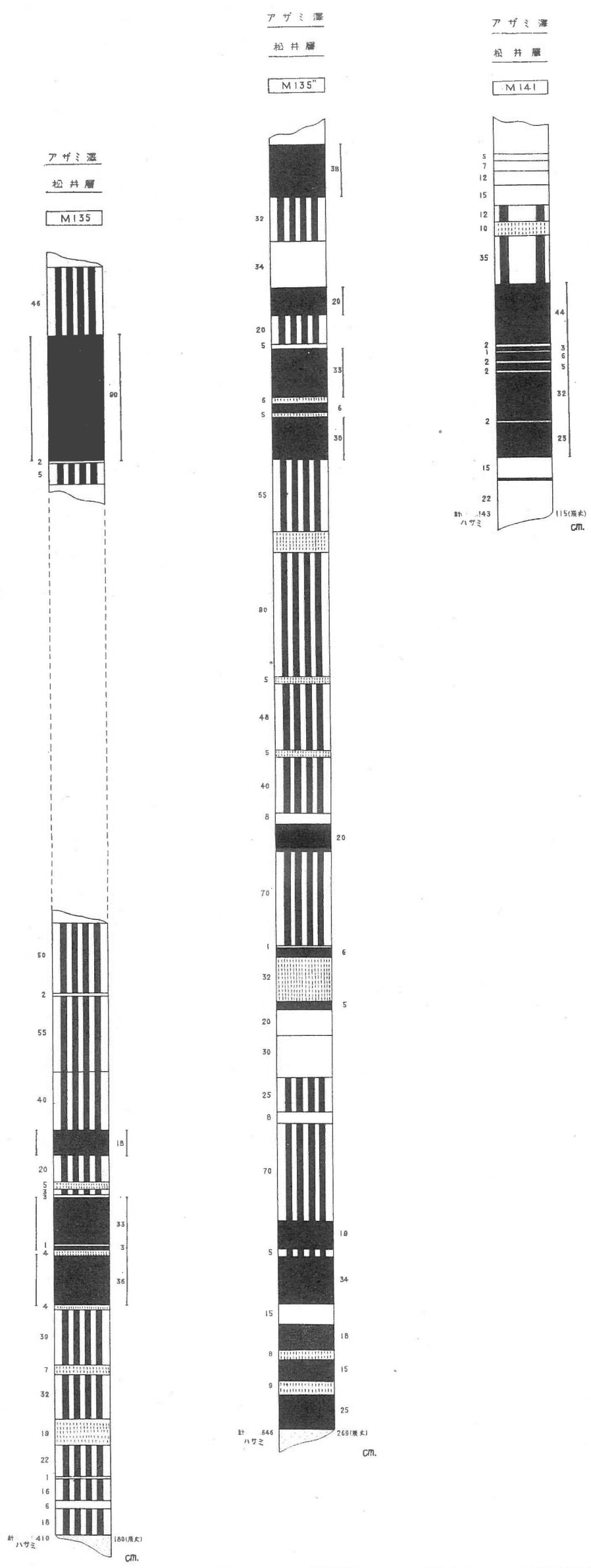


# アザミ沢炭層 (下部炭層群)





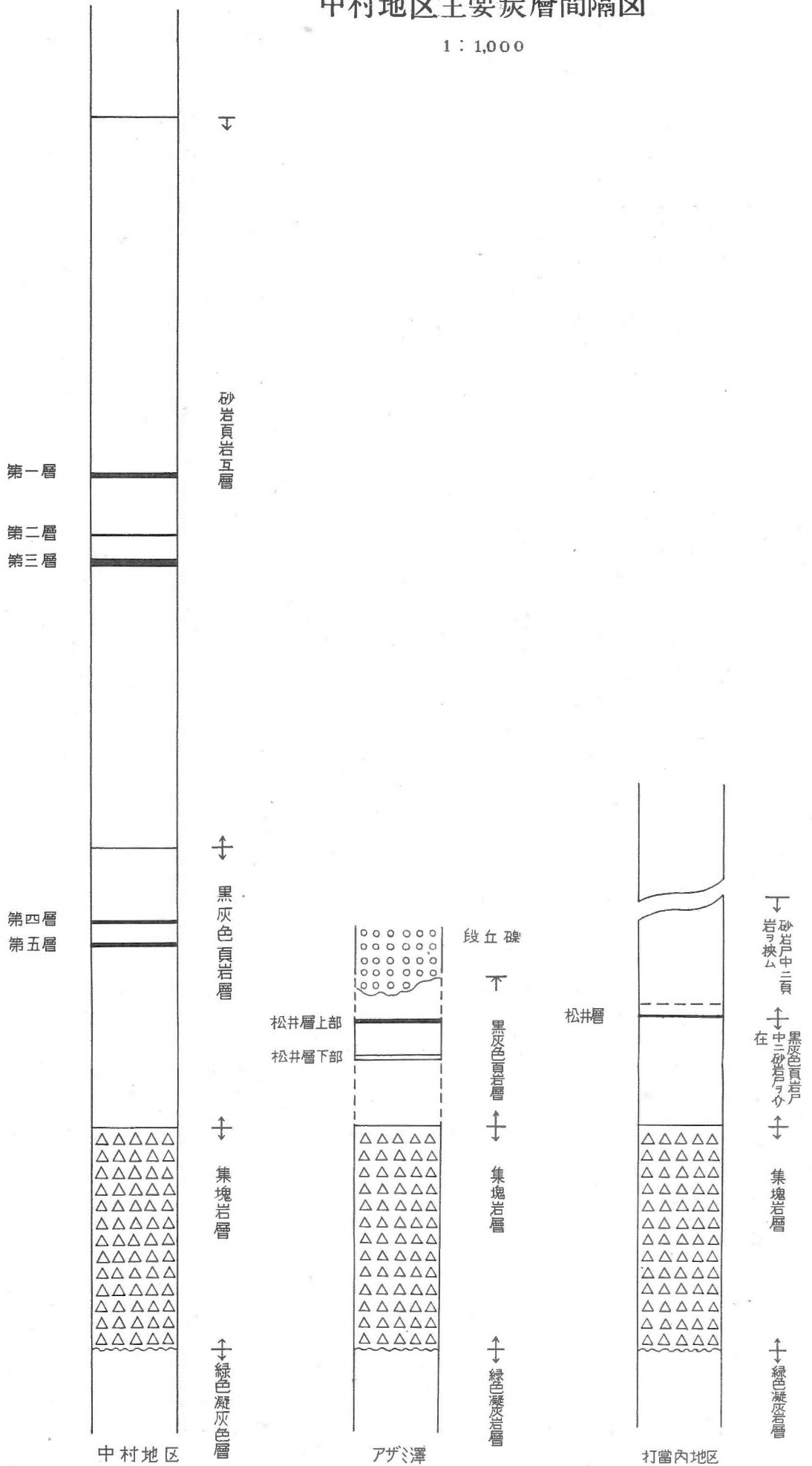
# アザミ沢炭層 (下部炭層群)



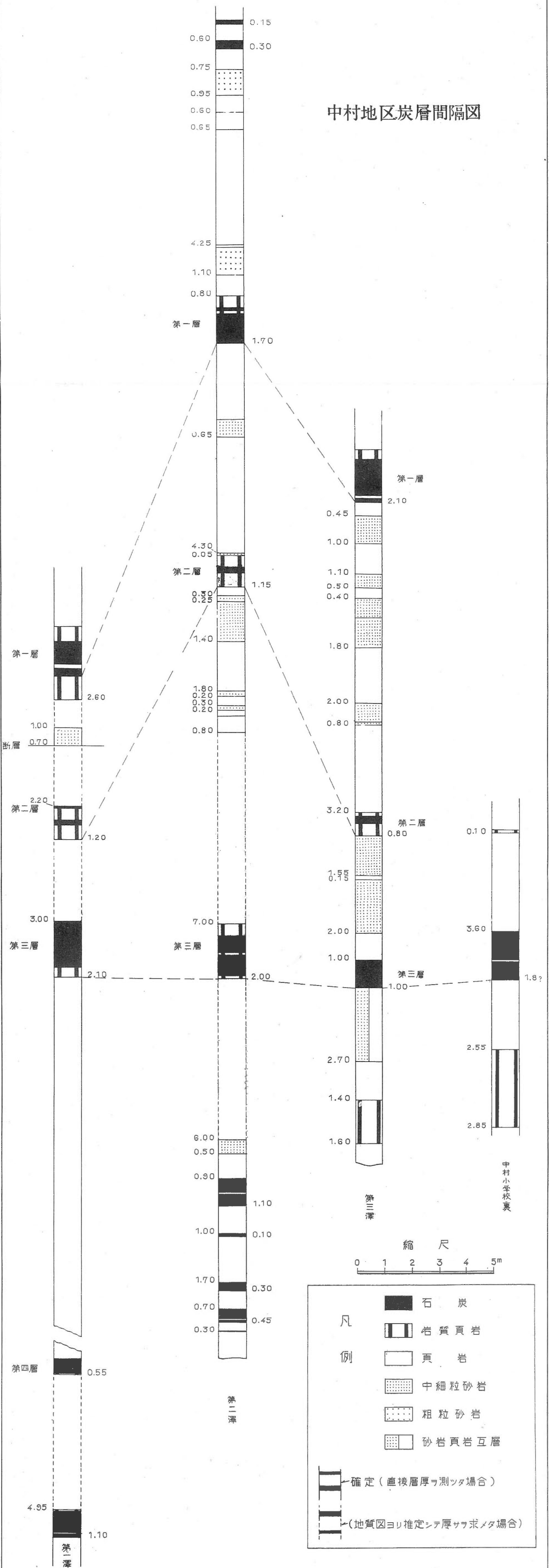


中村地区主要炭層間隔図

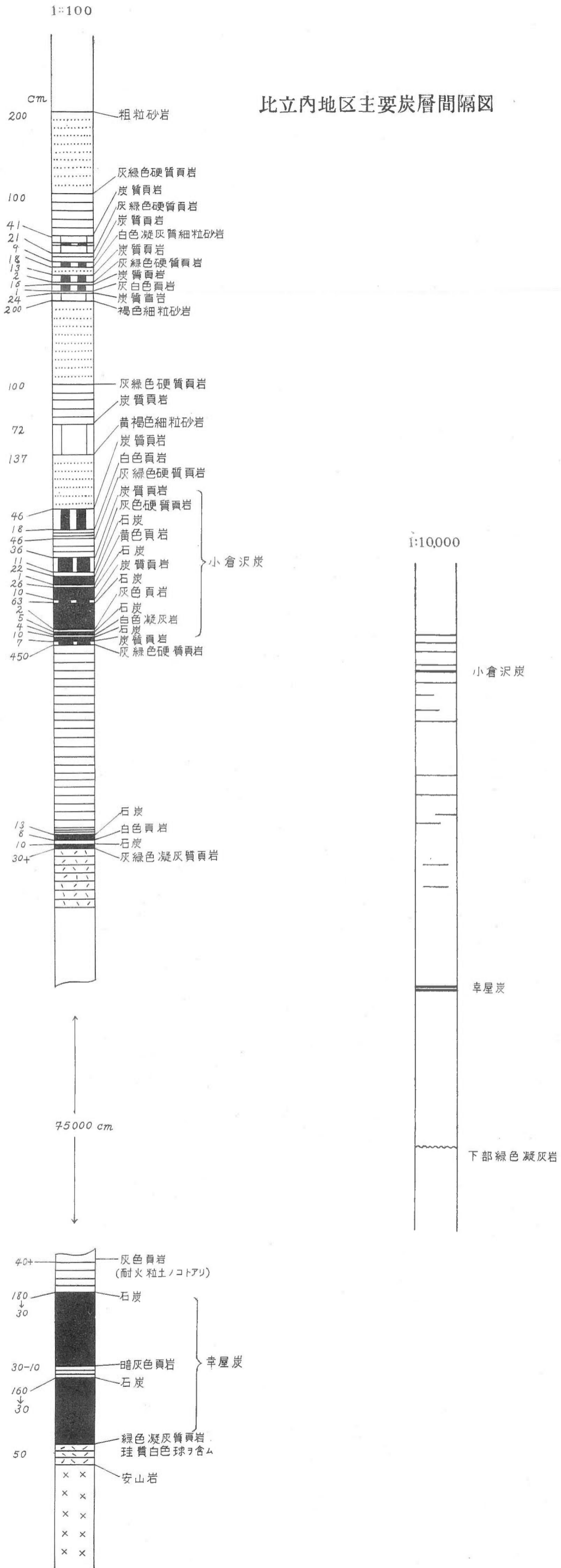
1 : 1,000



中村地区炭層間隔図



比立内地区主要炭層間隔図



比立内地区炭量計算区域図及炭層露頭線図及ボーリング予定位置図 (昭和 21 年)

