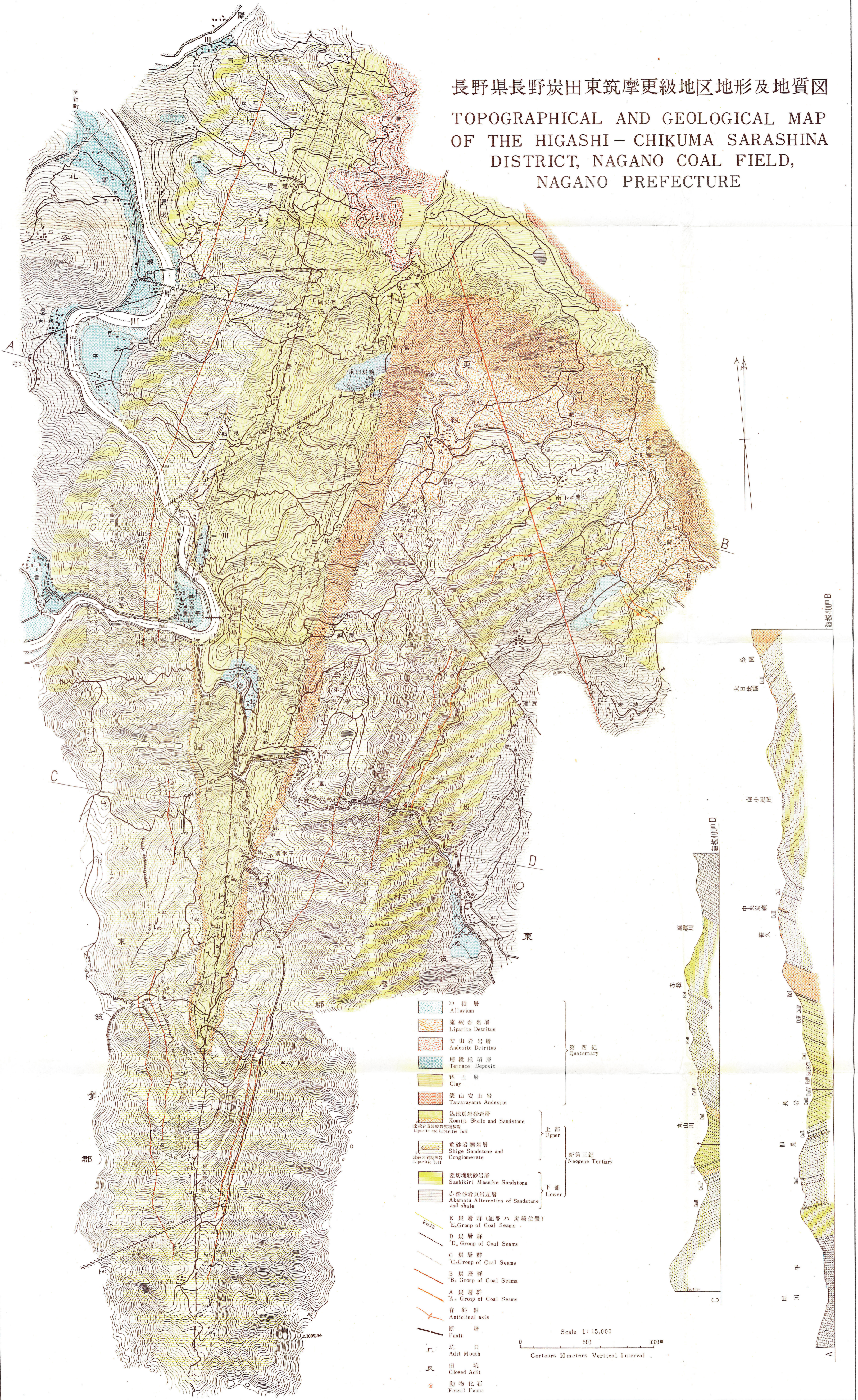
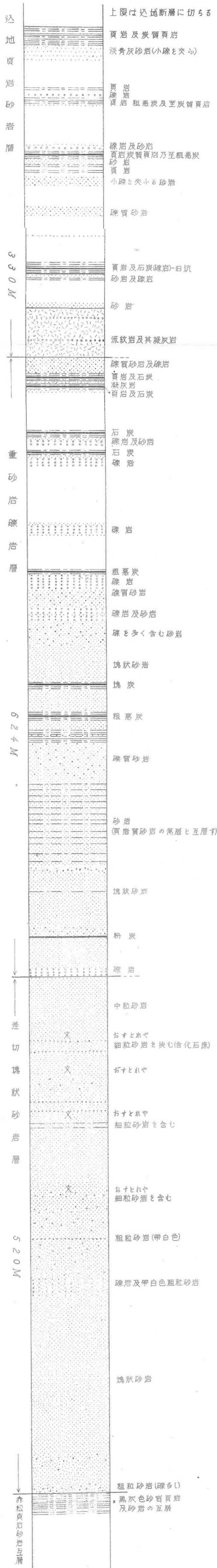


長野県長野炭田東筑摩更級地区地形及地質図 TOPOGRAPHICAL AND GEOLOGICAL MAP OF THE HIGASHI-CHIKUMA SARASHINA DISTRICT, NAGANO COAL FIELD, NAGANO PREFECTURE

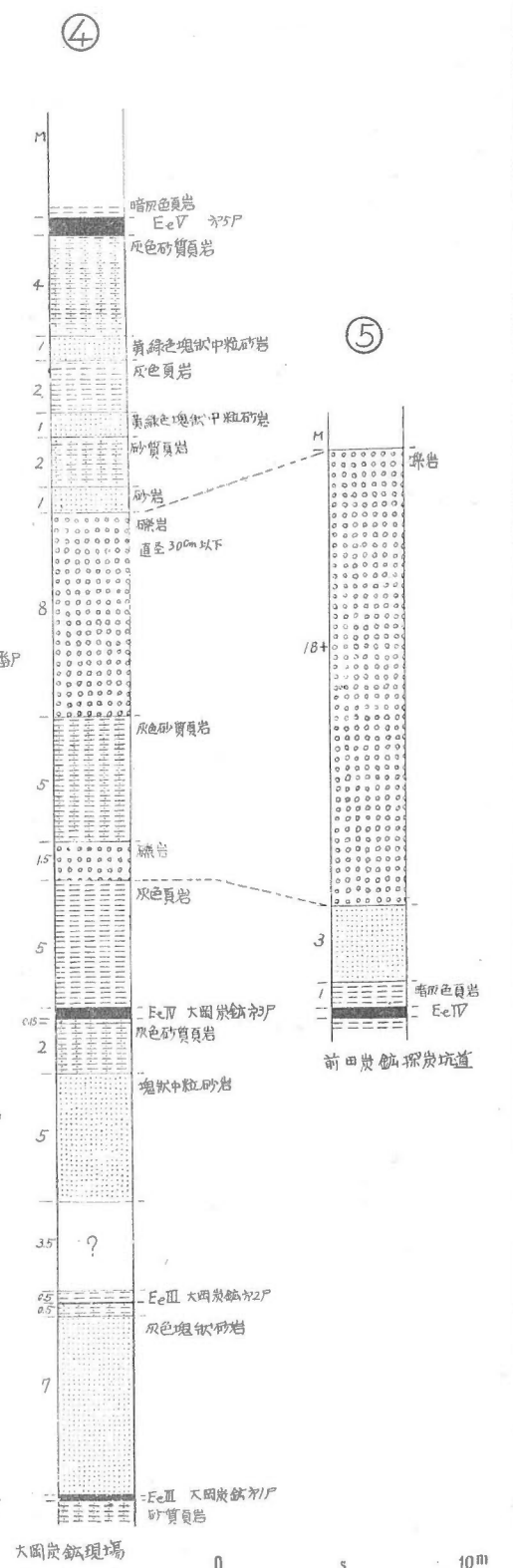
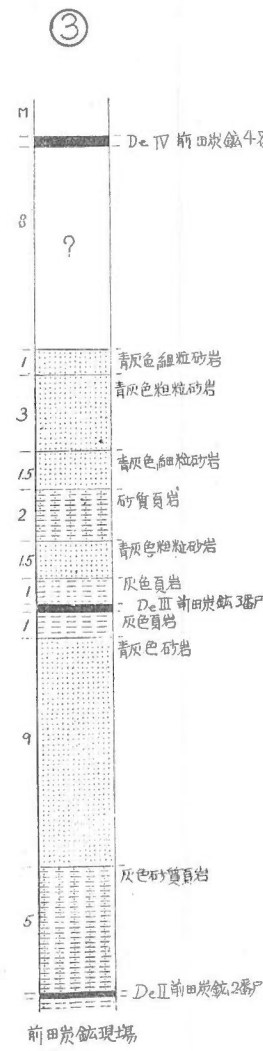
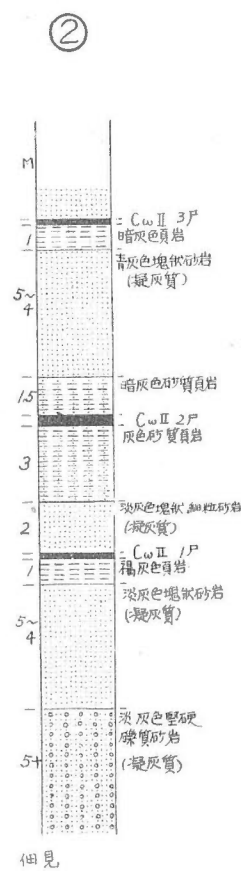
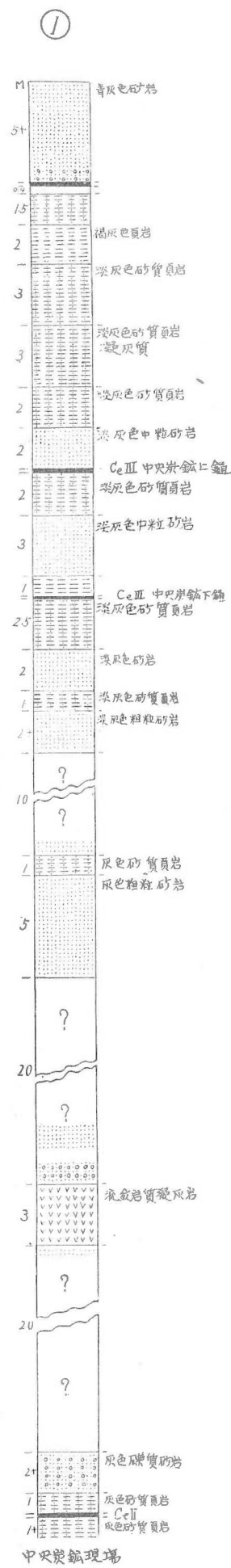
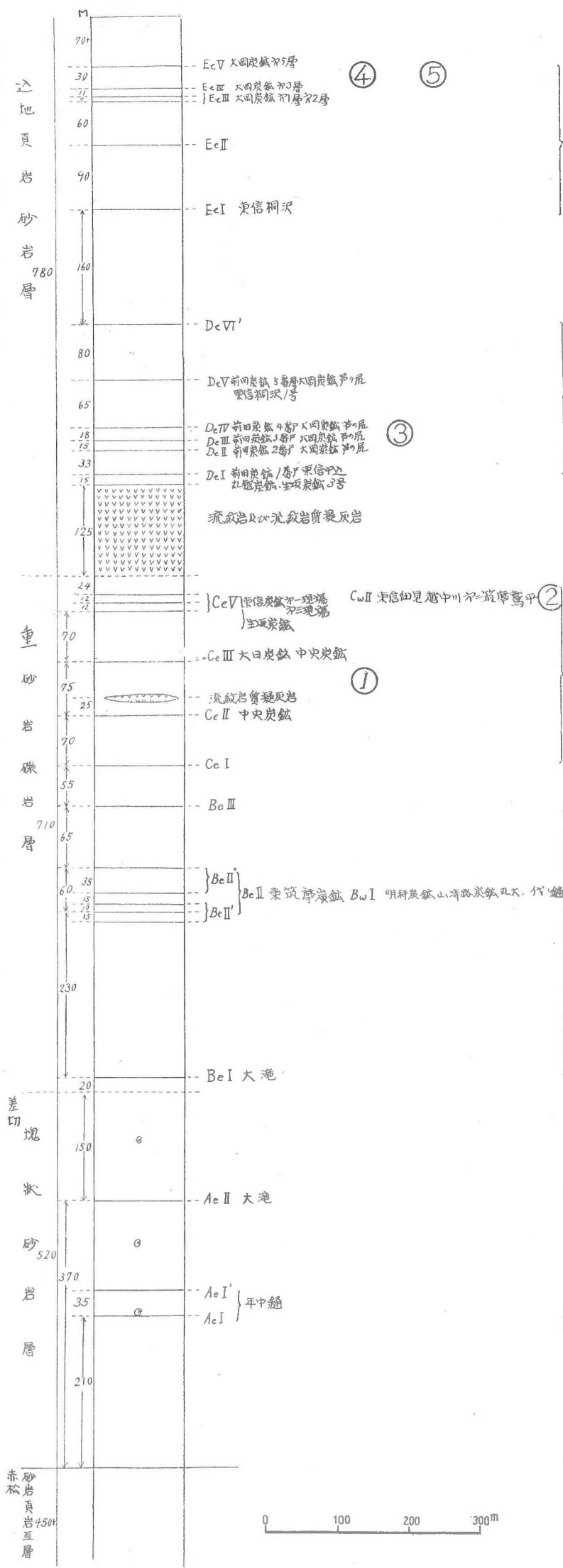


麻績川に沿う地質柱狀断面図 (込地向斜の東翼)
GEOLOGICAL COLUMNAR SECTION ALONG THE OMI RIVER
(ON THE EAST WING OF KOMIJI SYNCLINE)



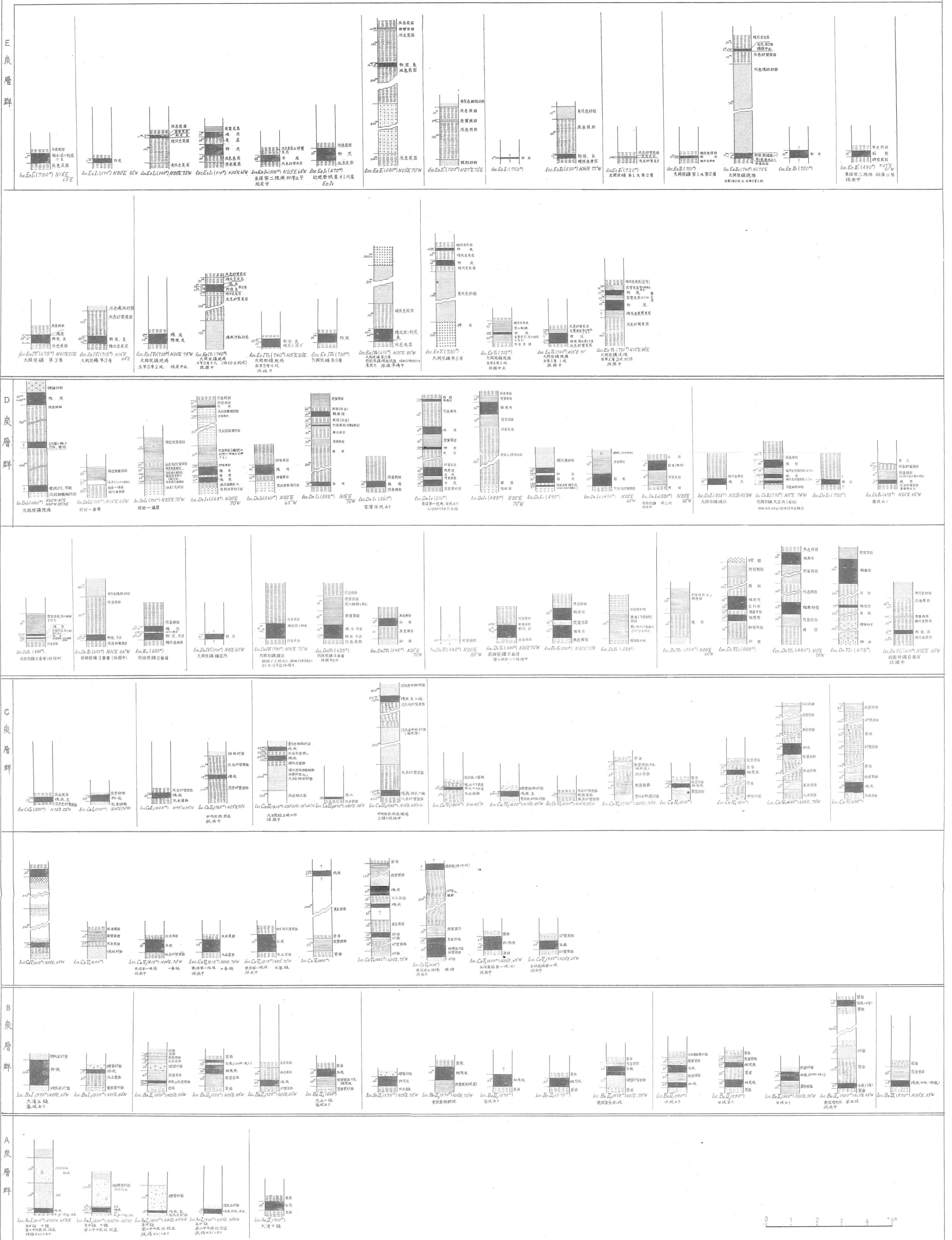
炭層柱狀圖

GEOLOGICAL COLUMNAR SECTION OF COAL SEAMS



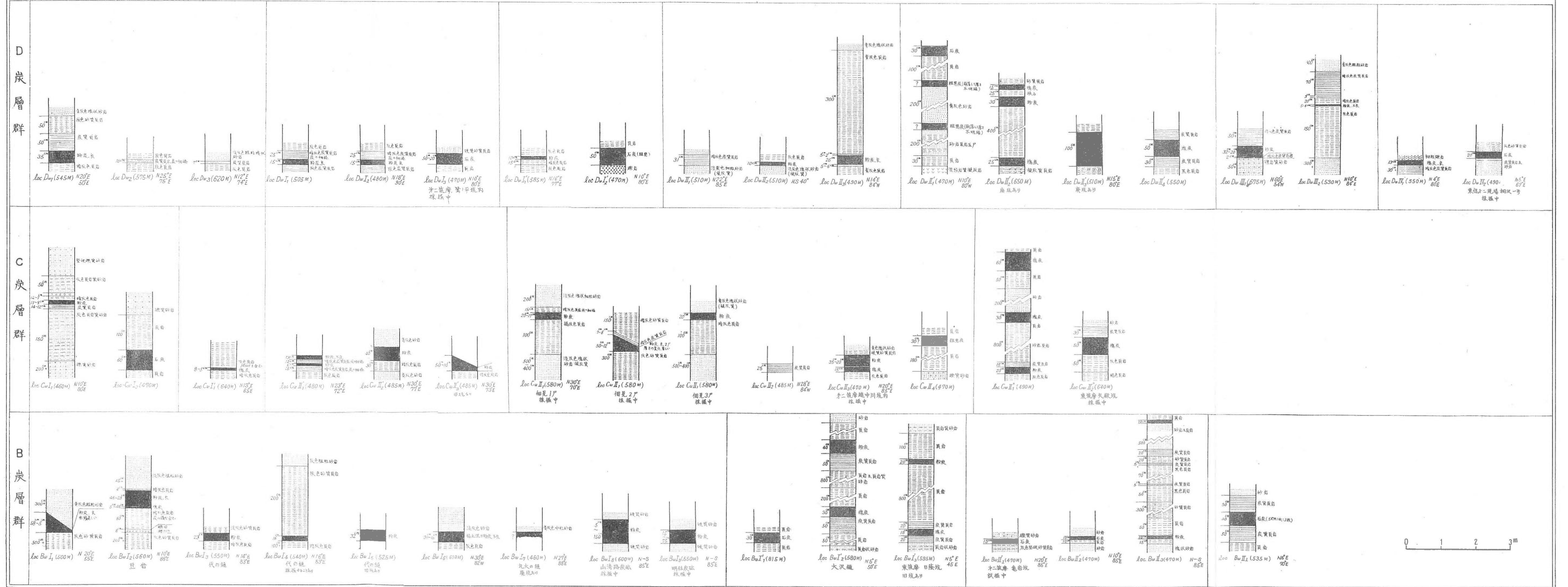


炭柱 図 I (込地向斜の東翼及野間脊斜の西翼) COLUMNAR SECTION OF COAL SEAMS (1) AT THE EAST WING OF KOMIJI SYNCLINE AND THE WEST WING OF NOMA ANTICLINE



炭柱圖 II (込地向斜の西翼)

COLUMNAR SECTION OF COAL SEAMS (2),
AT THE WEST WING OF KOMIJI SYNCLINE



中央炭礦坑内図
 MINE MAP OF CHUŌ COAL MINE



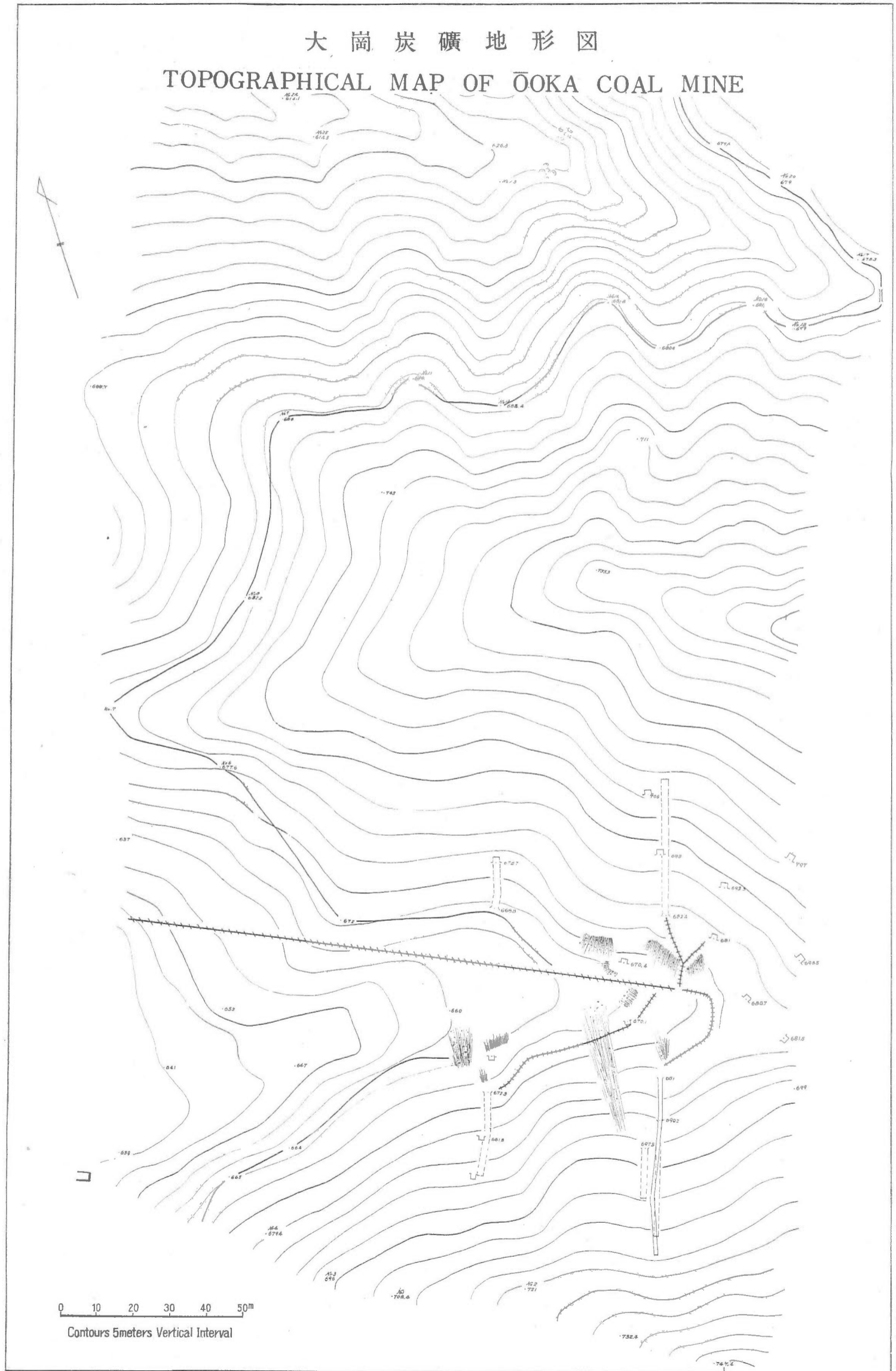
地形測量 製図 技官 西村嘉四郎

東信炭礦第一現場地形圖
TOPOGRAPHICAL MAP OF PIT NO.1 OF TOSHIN COAL MINE



地形測量製圖技官

大岡炭礦地形図
TOPOGRAPHICAL MAP OF ŌOKA COAL MINE



地形測量 製図 技官 石原二郎