

Recurrent radon minima and crustal-strain transients precursory to earthquakes in eastern Taiwan

M. C. T. Kuo

Department of Mineral and Petroleum Engineering

National Cheng Kung University, Tainan, Taiwan

Acknowledgements

- DPRC, National Cheng Kung University
- National Science Council of Taiwan
- Academia Sinica
- Water Resources Agency
- Central Geological Survey of Taiwan
- Central Weather Bureau
- Taiwan University
- Tokyo University
- Gifu University
- Geological Survey of Japan

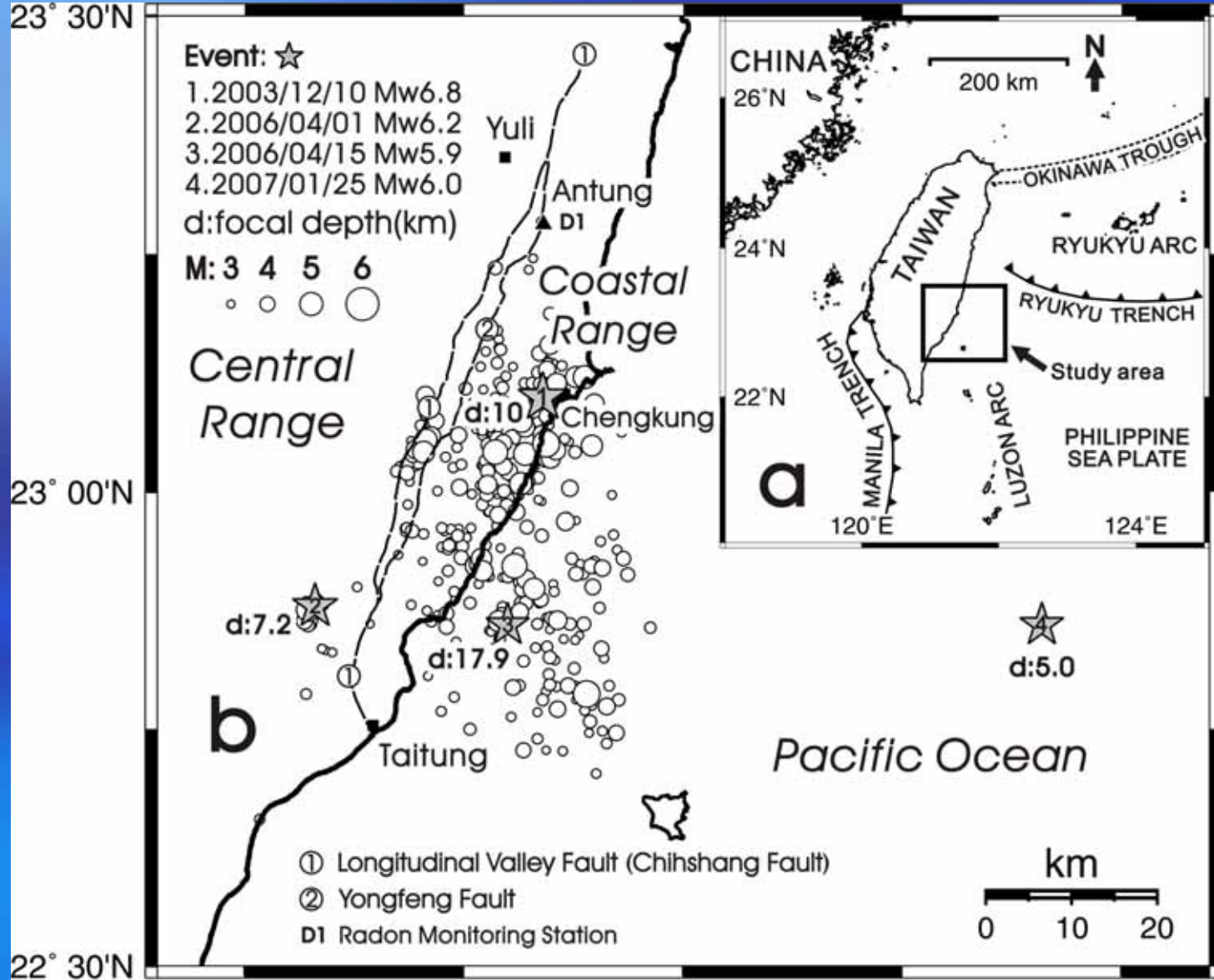


- Variations in radon (Rn-222) content in groundwater have been observed prior to some earthquakes.
- A sudden drop followed by an increase in the radon concentration occurred prior to the 1978 Izu-Oshima-kinkai earthquake of magnitude 7.0.

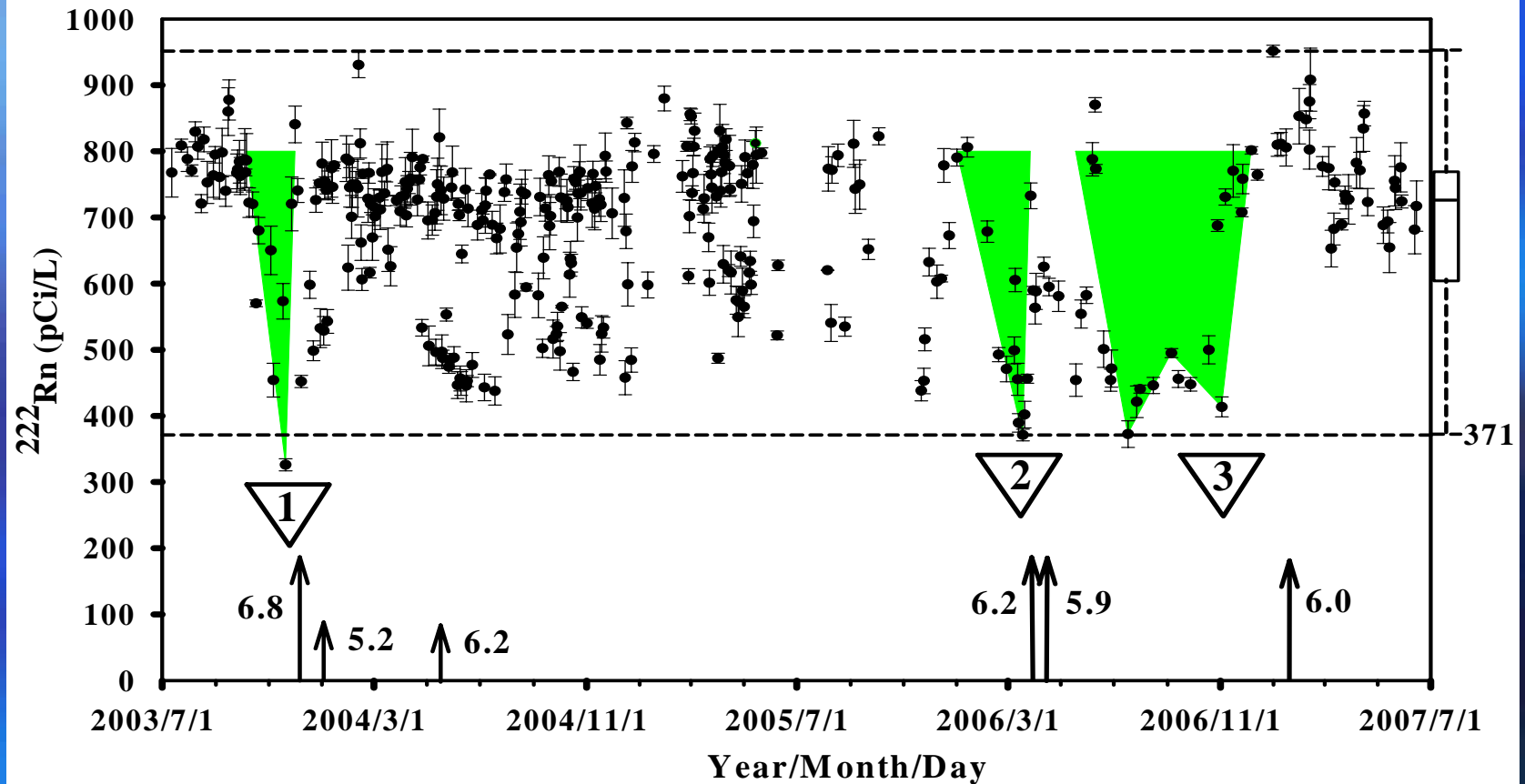
- For the first time, three anomalous decreases in radon concentration have been recorded prior to the large earthquakes within a 75 km radius from the Antung D1 monitoring well in eastern Taiwan.

- M_W 6.8, December 10, 2003.
- M_W 6.2 and M_W 5.9, April 1 and 15, 2006.
- M_W 6.0, January 25, 2007.

Map of the epicenters of the earthquakes that occurred near Chengkung.



Radon concentration data at the monitoring well (D1) in the Antung hot spring.



- The box-and-whisker plot shows the median (724 pCi/L).
- The whiskers (371 pCi/L and 952 pCi/L) cover all but the most extreme values in the data set.

Recurrent precursory radon minima observed at Antung.

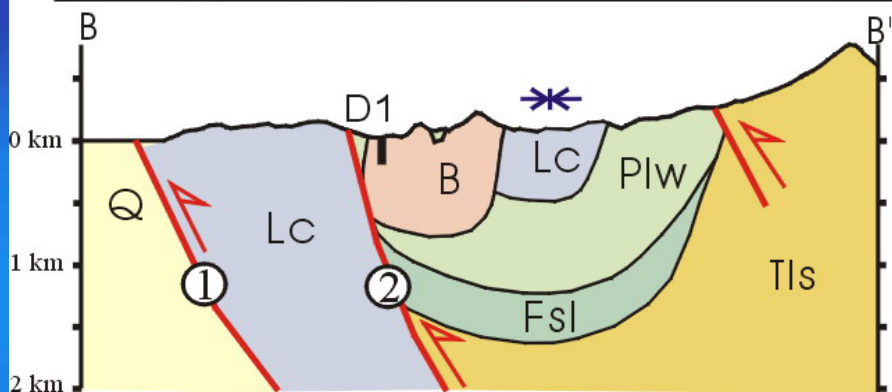
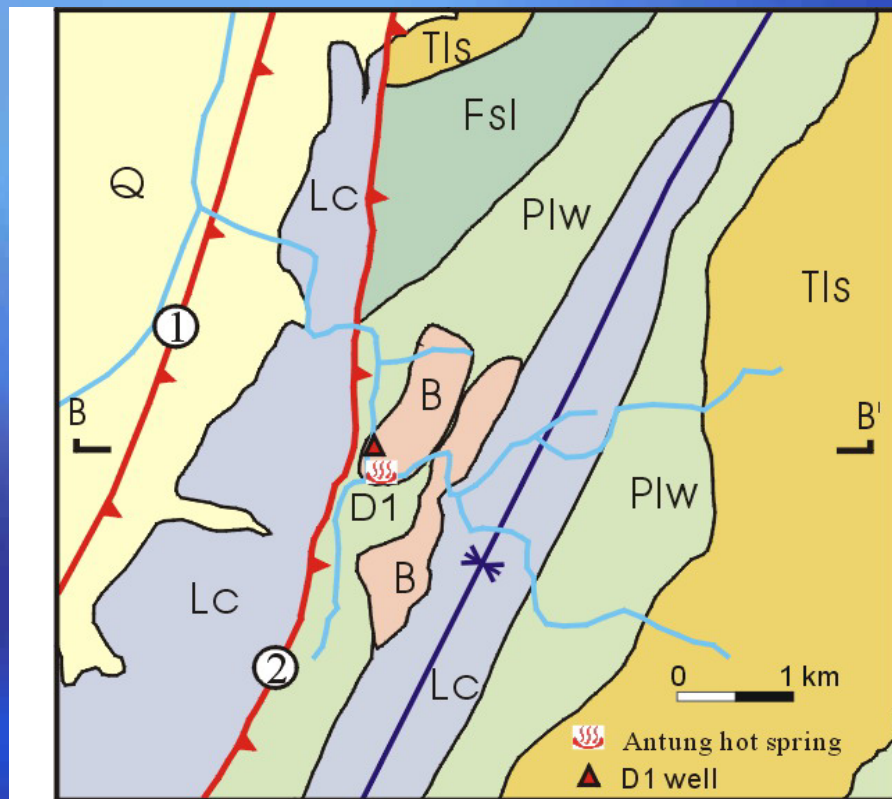
Concentration and date of radon-222 minimum, pCi/L	Magnitude and date of the associated earthquake, Mw	Distance between well D1 and hypocenter, km
326 ± 9 (November 20, 2003)	6.8 (December 10, 2003)	20
371 ± 9 (March 16, 2006)	6.2 (April 1, 2006)	52
414 ± 15 (November 2, 2006)	6.0 (January 25, 2007)	75

- The recurrent precursory minima in radon concentration observed at the Antung hot spring demonstrate that the radon minimum decreases as the earthquake magnitude increases and as the distance between the hypocenter and the Antung hot spring decreases.

- Reproducible observations at the Antung hot spring suggest that radon concentrations in ground water, under suitable geological conditions, can be a sensitive tracer of strain changes in the crust preceding an earthquake.

- The Antung hot spring is situated in a fractured block of tuffaceous-sandstone surrounded by ductile mudstone.

Geological map and cross section near the radon-monitoring well in the area of Antung hot spring.

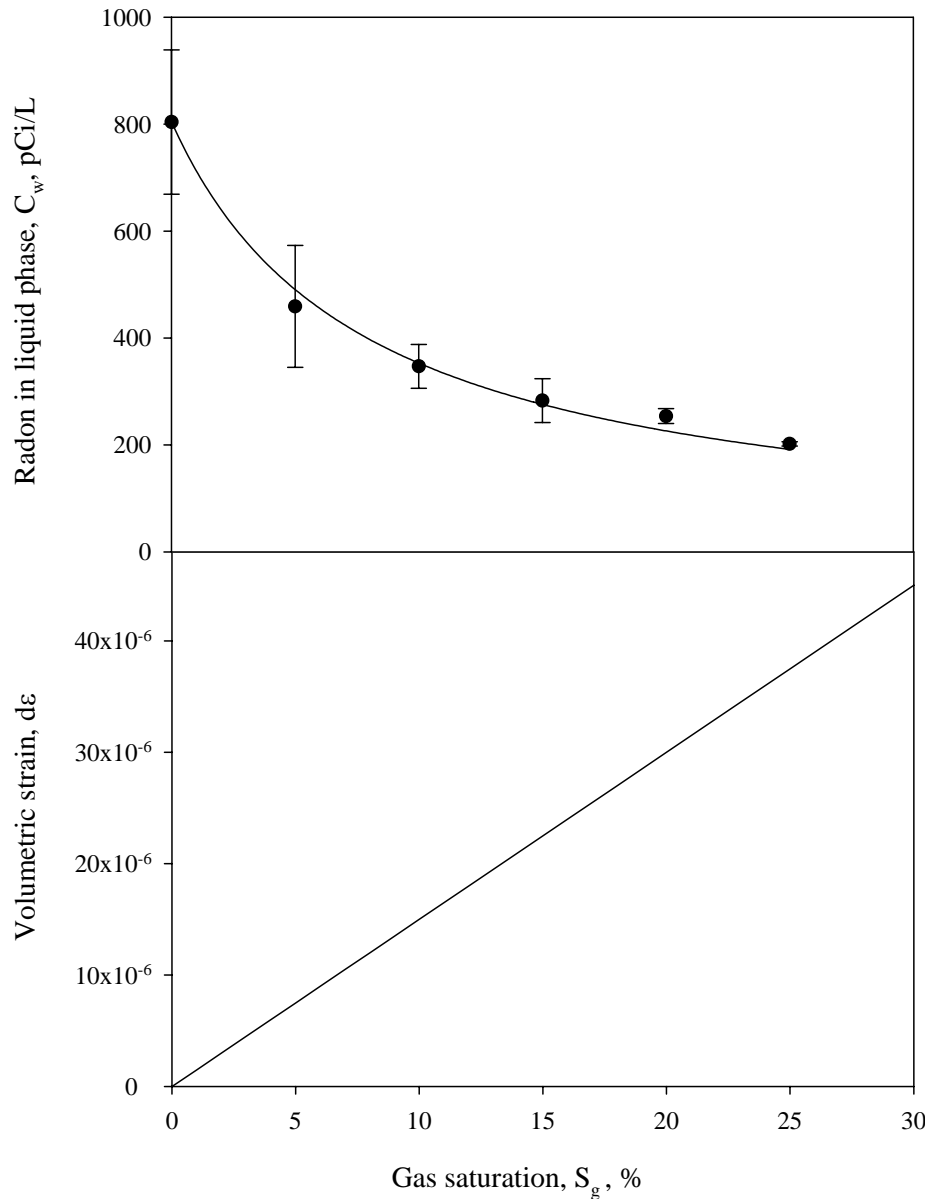


- Q: Holocene deposits**
- Lc: Lichi mélange**
- Plw: Paliwan Formation**
- Fsl: Fanshuliao Formation**
- Tls: Tuluanshan Formation**
- B: tuffaceous fractured block**
- D1: radon-monitoring well**
 - : Chihshang, or,**
 - Longitudinal Valley Fault**
 - : Yongfeng Fault**

- Under these geological conditions, the dilation of brittle rock mass occurred at a rate faster than the recharge of pore water and gas saturation developed in newly created cracks preceding the above mentioned earthquakes.

- Radon partitioning into the gas phase can explain the anomalous decreases of radon precursory to the earthquakes.

- Ground-water radon can be employed as a quantitative tracer to calculate strain changes associated with earthquake occurrences.

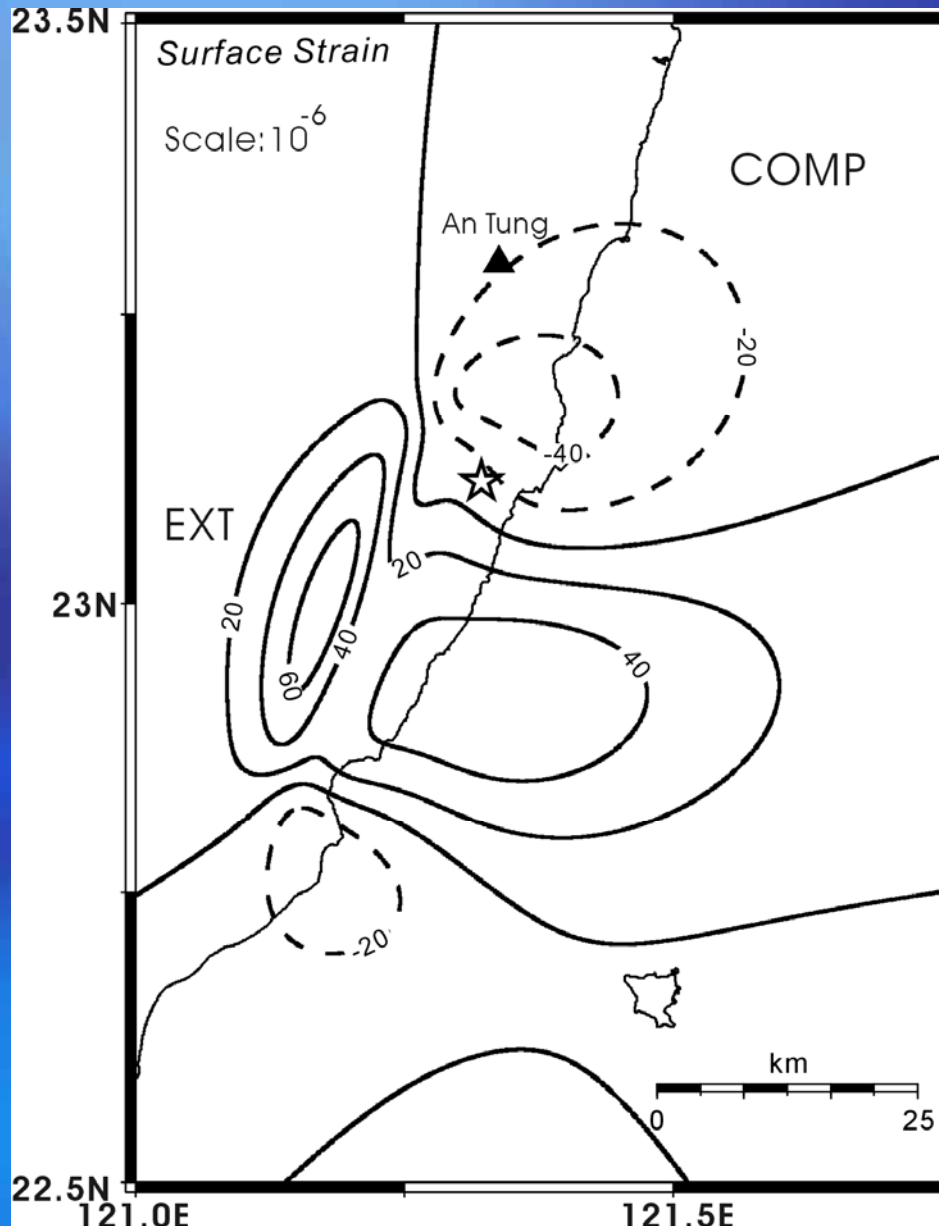


(Top) Variation of radon concentration remaining in ground water with gas saturation at 60 using formation brine from the Antung hot spring.

(Bottom) Variation of volumetric strain change with gas saturation.

- We also calculated the coseismic strain distribution due to the 2003 Chengkung earthquake based on the dislocation fault model.

Distribution of coseismic surface strain (ppm) calculated based on the fault dislocation model.



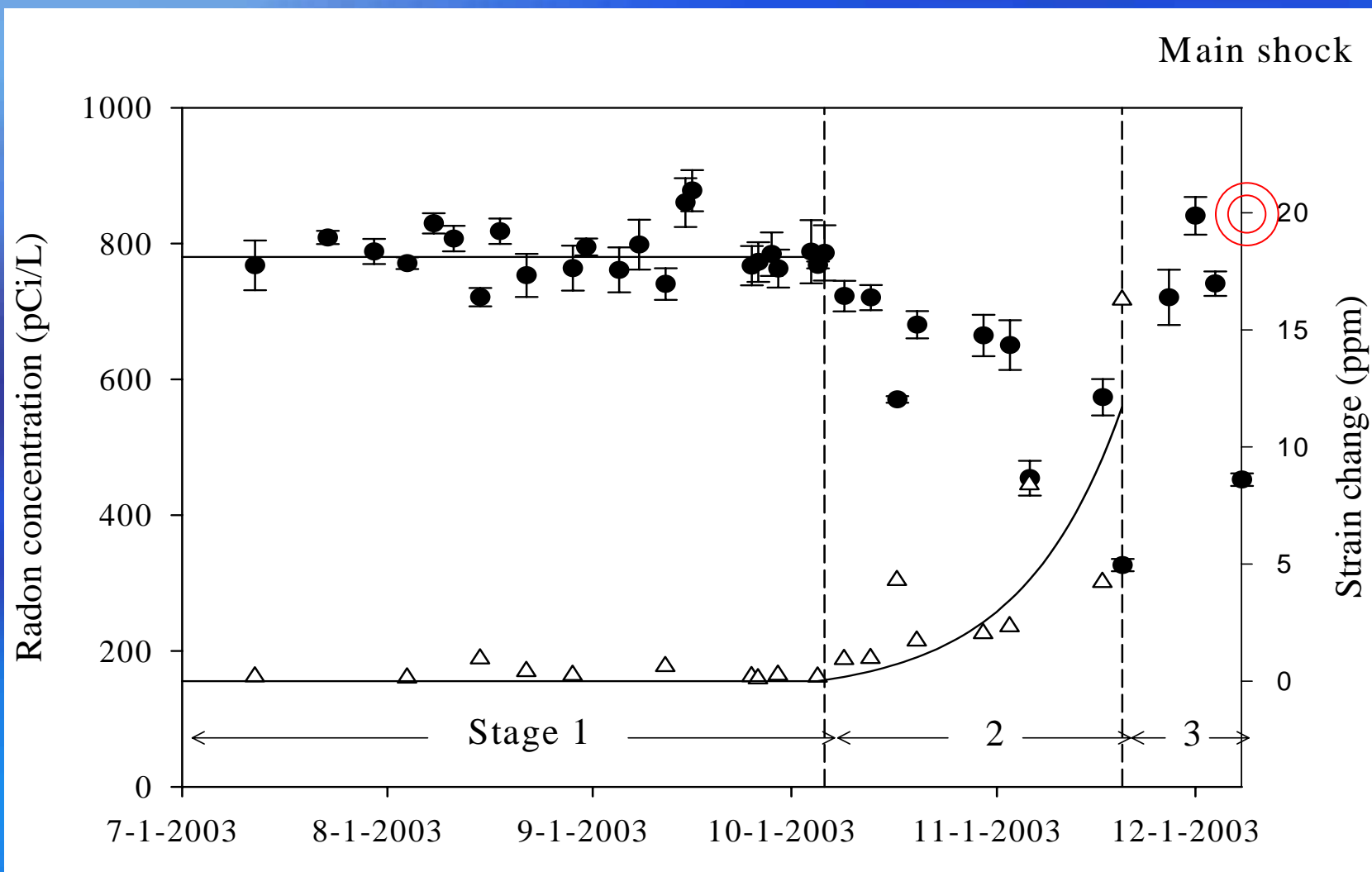
The open star denotes the 2003 mainshock.

The filled triangle denotes the radon-monitoring well (D1).

EXT and COMP denote dilatation and contraction, respectively.

- The calculated surface strain near the Antung hot spring area was about 20 ppm.

Radon and crustal-strain transients prior to the 2003 MW 6.8 Chengkung earthquake at the monitoring well (D1) in the Antung hot spring.



- Stage 1 is buildup of elastic strain.
- Stage 2 is dilatancy and development of cracks and gas saturation.
- Stage 3 is influx of ground water and diminishment of gas saturation.

- The aseismic transient crustal-strain signals prior to the 2003 M_w 6.8 Chengkung earthquake can be correlated reasonably with the coseismic strain change calculated based on the dislocation fault model using the data recorded by nearby strong-motion stations and a GPS network.

Periodic Table of Elements

IA												IIA							IIIA	IVA	VA	VIA	VIIA	2
1 H 1.00797																	2 He 4.003							
3 Li 6.939	4 Be 9.012											5 B 10.81	6 C 12.011	7 N 14.007	8 O 15.9994	9 F 19.00	10 Ne 20.183							
11 Na 22.99	12 Mg 24.31											13 Al 26.98	14 Si 28.09	15 P 30.974	16 S 32.064	17 Cl 35.453	18 Ar 39.948							
		IIIB	IVB	VB	VIB	VIIB	VIII B			IB	IIB													
19 K 39.102	20 Ca 40.08	21 Sc 44.96	22 Ti 47.90	23 V 50.94	24 Cr 52.00	25 Mn 54.94	26 Fe 55.85	27 Co 58.93	28 Ni 58.71	29 Cu 63.54	30 Zn 65.37	31 Ga 69.72	32 Ge 72.59	33 As 74.92	34 Se 78.96	35 Br 79.909	36 Kr 83.80							
37 Rb 85.47	38 Sr 87.62	39 Y 88.905	40 Zr 91.22	41 Nb 92.91	42 Mo 95.94	43 Tc 98	44 Ru 101.1	45 Rh 102.90	46 Pd 106.4	47 Ag 107.87	48 Cd 112.4	49 In 114.82	50 Sn 118.69	51 Sb 121.75	52 Te 127.60	53 I 126.90	54 Xe 131.30							
55 Cs 132.905	56 Ba 137.34																							
		72 Hf 178.49	73 Ta 180.95	74 W 183.85	75 Re 186.2	76 Os 190.2	77 Ir 192.2	78 Pt 195.09	79 Au 196.97	80 Hg 200.59	81 Tl 204.37	82 Pb 207.19	83 Bi 208.98	84 Po 210	85 At 210	86 Rn 222								
87 Fr 223	88 Ra 226																							
		← Lanthanide series																						
		← Actinide series																						
57 La 138.91	58 Ce 140.12	59 Pr 140.91	60 Nd 144.24	61 Pm 147	62 Sm 150.35	63 Eu 152	64 Gd 157.25	65 Tb 158.92	66 Dy 162.50	67 Ho 164.93	68 Er 167.26	69 Tm 168.93	70 Yb 173.04	71 Lu 174.97										
89 Ac 227	90 Th 232.04	91 Pa 231	92 U 238.03	93 Np 237	94 Pu 242	95 Am 243	96 Cm 247	97 Bk 247	98 Cf 251	99 Es 254	100 Fm 253	101 Md 256	102 No 254	103 Lw 257										

Future Plans

- Pumping tests
- Temperature measurements
- Helium measurements
- Mathematical models

Thanks

國立成功大學
資源工程學系
郭明錦

