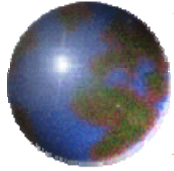


*The Study of Satellite Infrared
Thermal Imagers for
Earthquake Precursor*



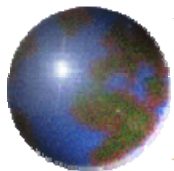
Kuei-Hsiang Cheng

**Integrated Research Laboratory on Prevention of Seismic Hazards
Kao Yuan University**



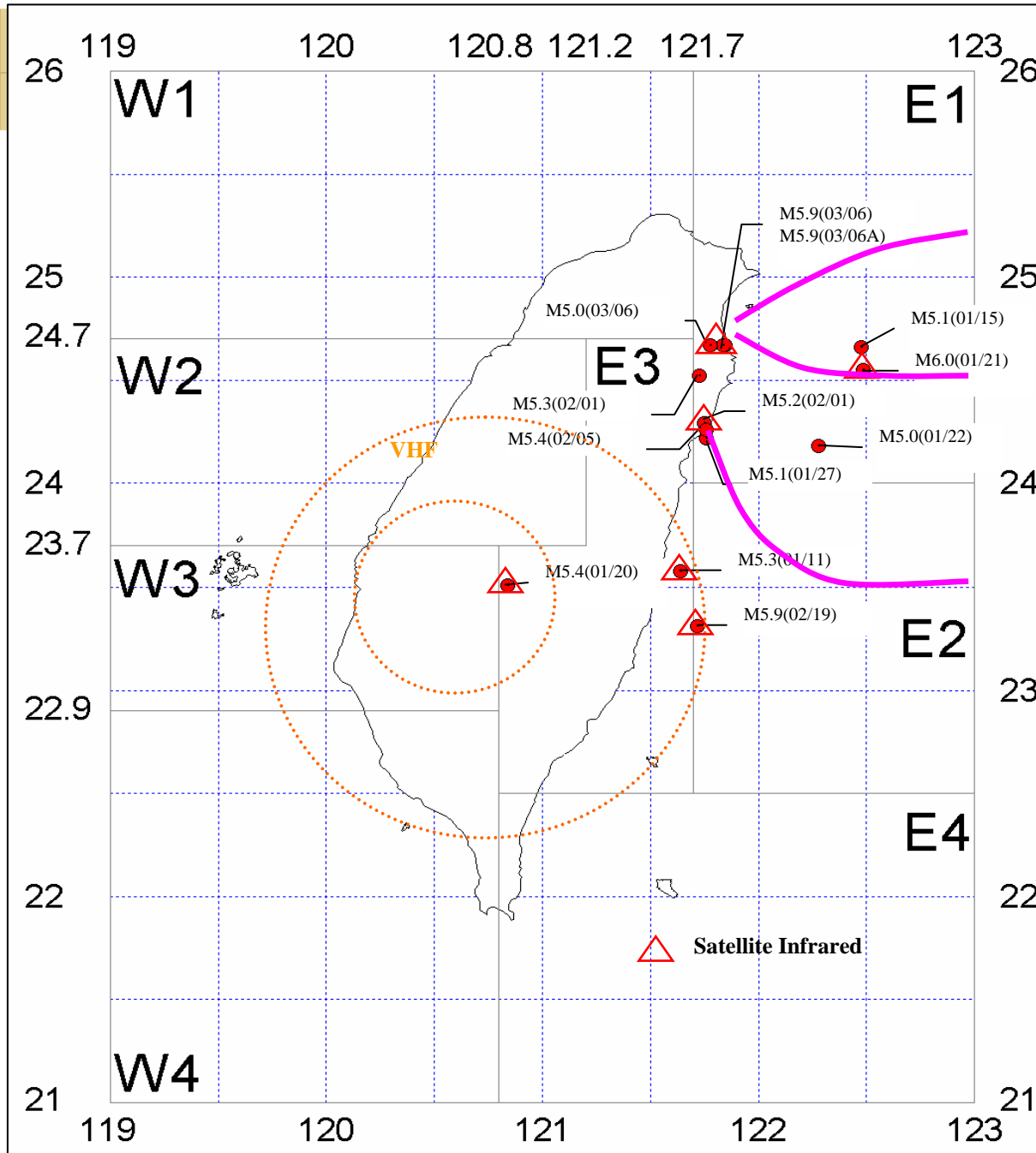
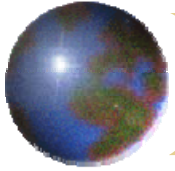
ABSTRACT

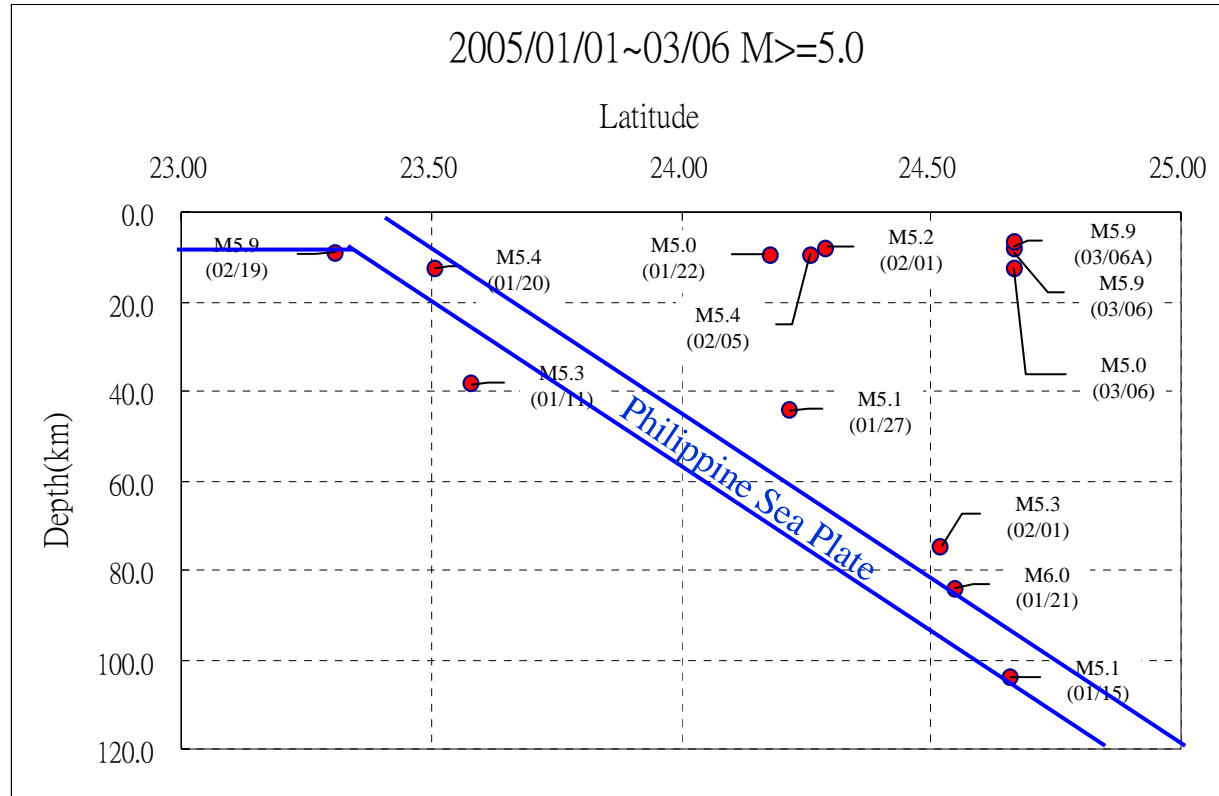
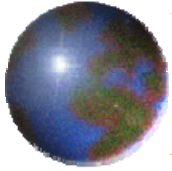
From 2005/01 to 2005/03, there occurred 13 times $M \geq 5.0$ EQs in Taiwan area. We have found six times parted from 12 days, 14 days, 2 days, 8 days, 11 days and 10 days before, we identified clear satellite infrared thermal image precursors just as mapping to the epicenters in this report.

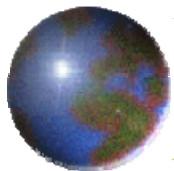


The Catalog of EQ(M \geq 5.0) From CWB 2005/01~2005/03

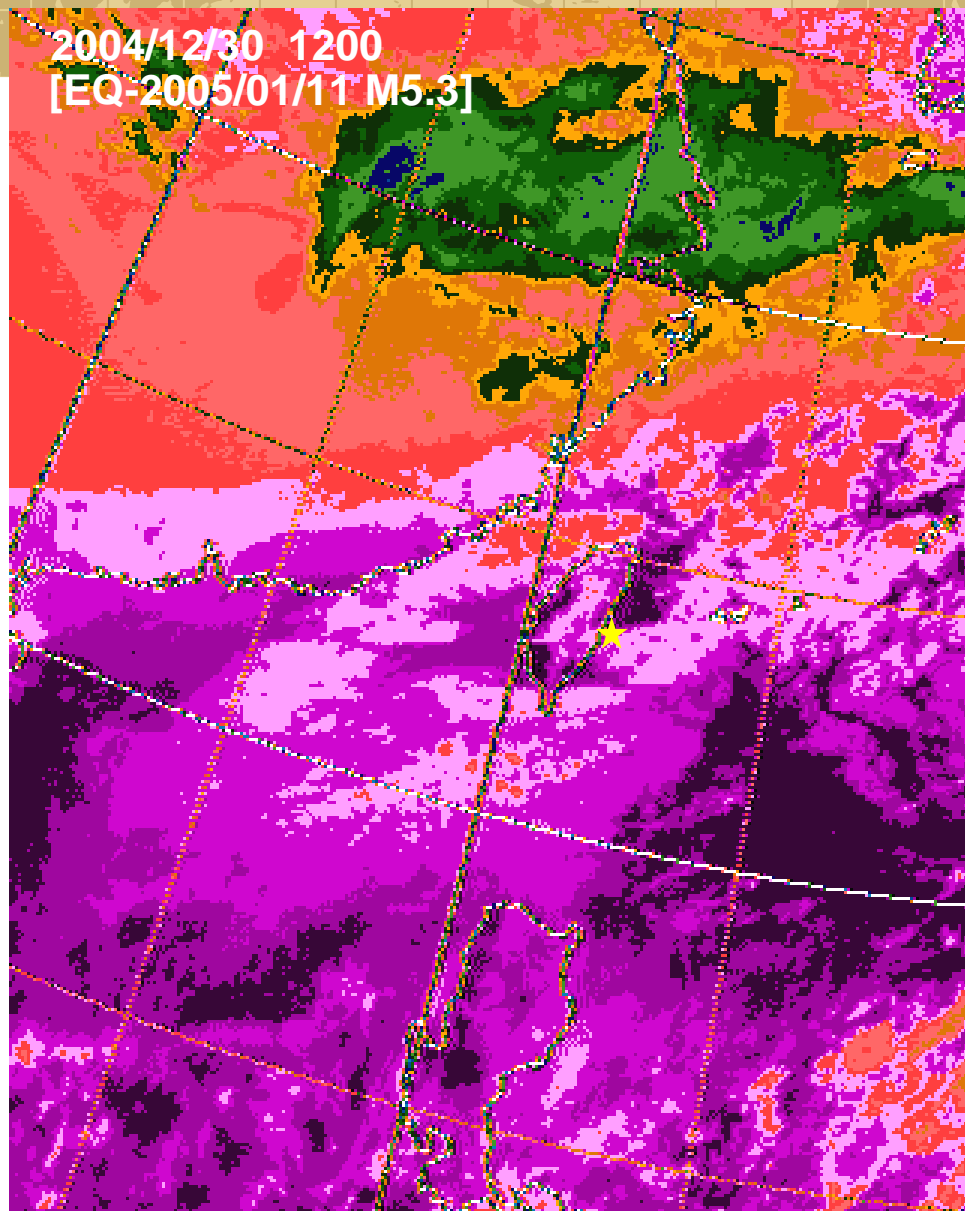
No.	cwb_no	taip_date	taip_time	latitude	longitude	depth	mag	zoon
1	94003	2005/01/11	08:58:21.5	23.58	121.64	38.3	5.3	E3
2	94005	2005/01/15	13:02:32.0	24.66	122.48	104.4	5.1	E1
3	94006	2005/01/20	15:47:16.6	23.51	120.84	13.0	5.4	E3
4	94008	2005/01/21	22:28:21.7	24.55	122.49	84.2	6.0	E1
5	94010	2005/01/22	14:56:45.7	24.18	122.28	9.9	5.0	E1
6	94012	2005/01/27	20:31:34.6	24.22	121.76	44.3	5.1	E1
7	94014	2005/02/01	09:59:47.8	24.29	121.75	8.2	5.2	E1
8	94015	2005/02/01	12:56:39.0	24.52	121.73	74.9	5.3	E1
9	94019	2005/02/05	19:00:52.6	24.26	121.76	9.9	5.4	E1
10	94025	2005/02/19	04:18:17.9	23.31	121.72	9.4	5.9	E2
11	94034	2005/03/06	03:06:51.6	24.67	121.85	8.5	5.9	E1
12	94034A	2005/03/06	03:07:58.8	24.67	121.84	7.0	5.9	E1
13	94035	2005/03/06	03:16:25.3	24.67	121.78	12.9	5.0	E1

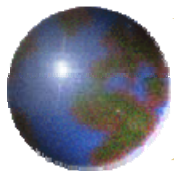




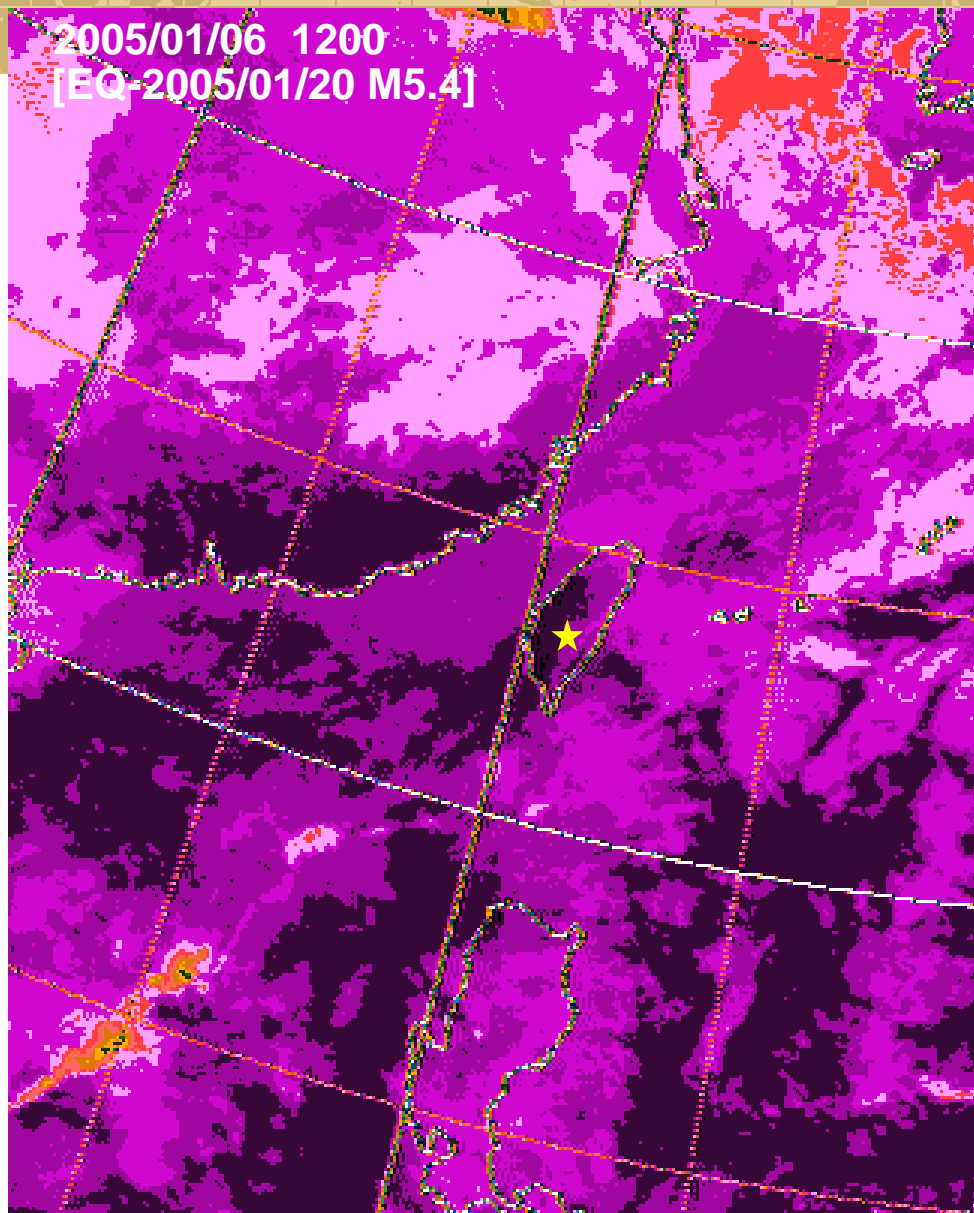


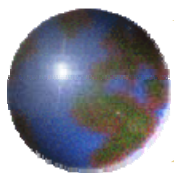
2004/12/30 1200
[EQ-2005/01/11 M5.3]



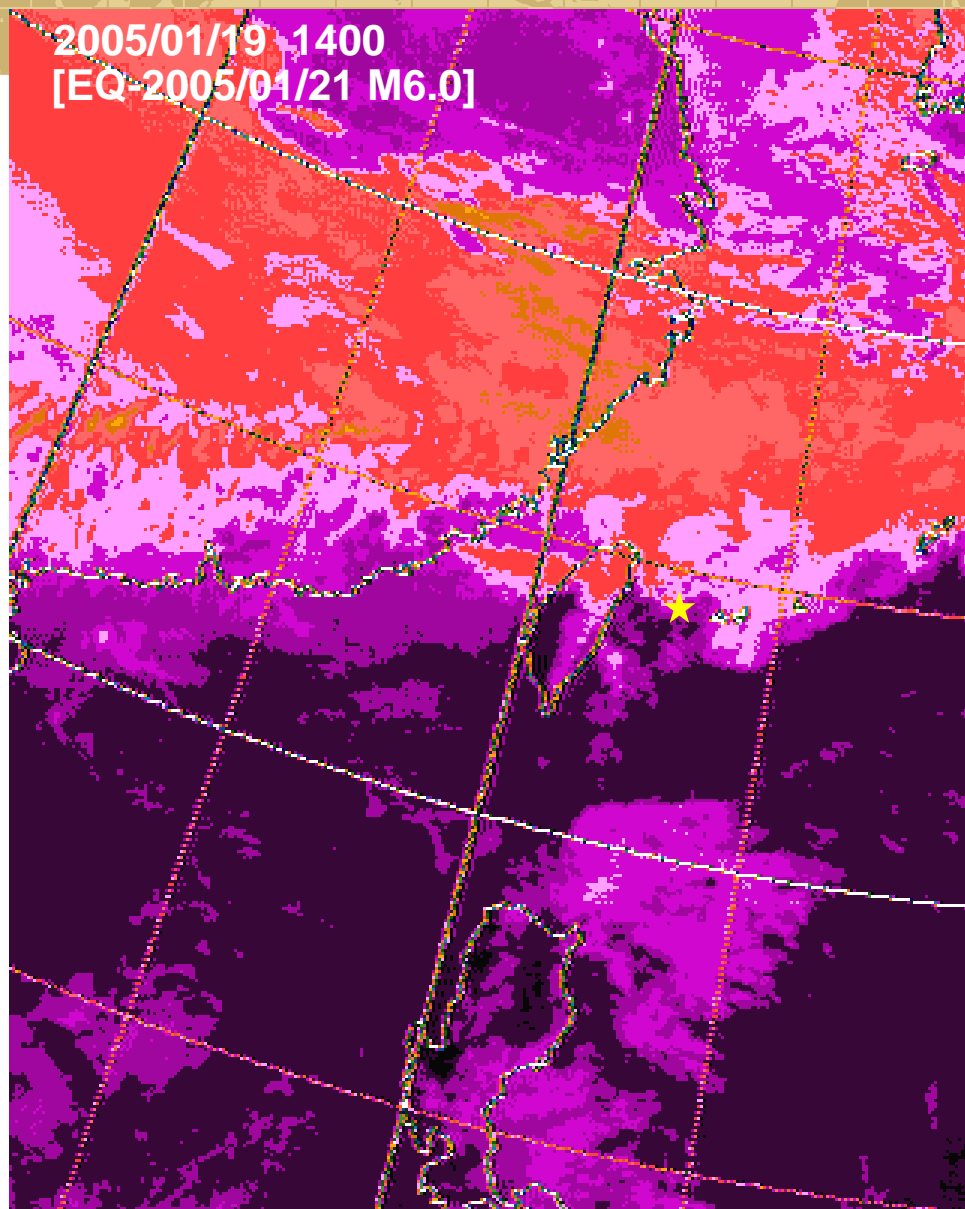


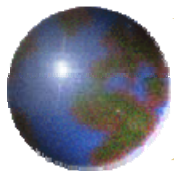
2005/01/06 1200
[EQ-2005/01/20 M5.4]



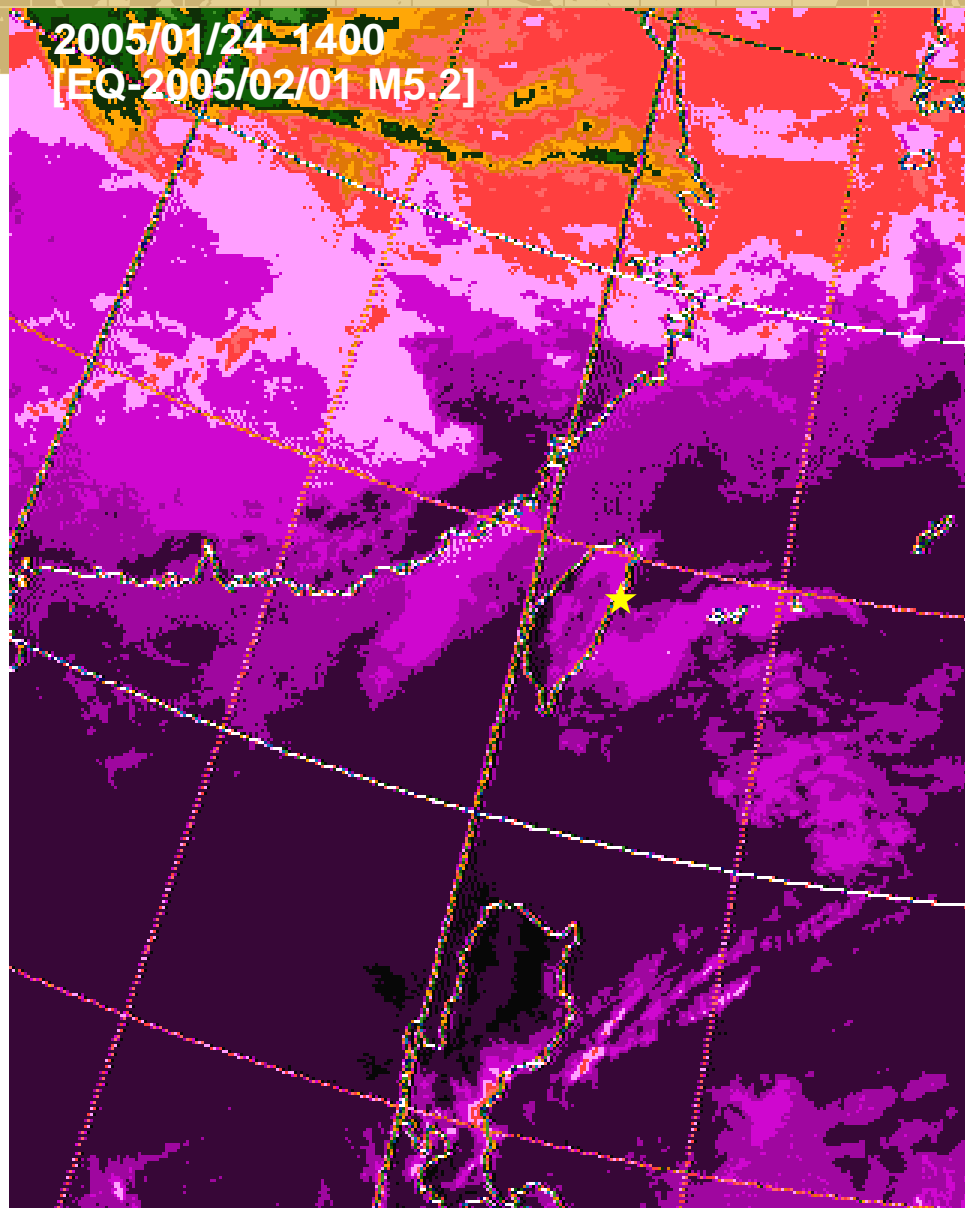


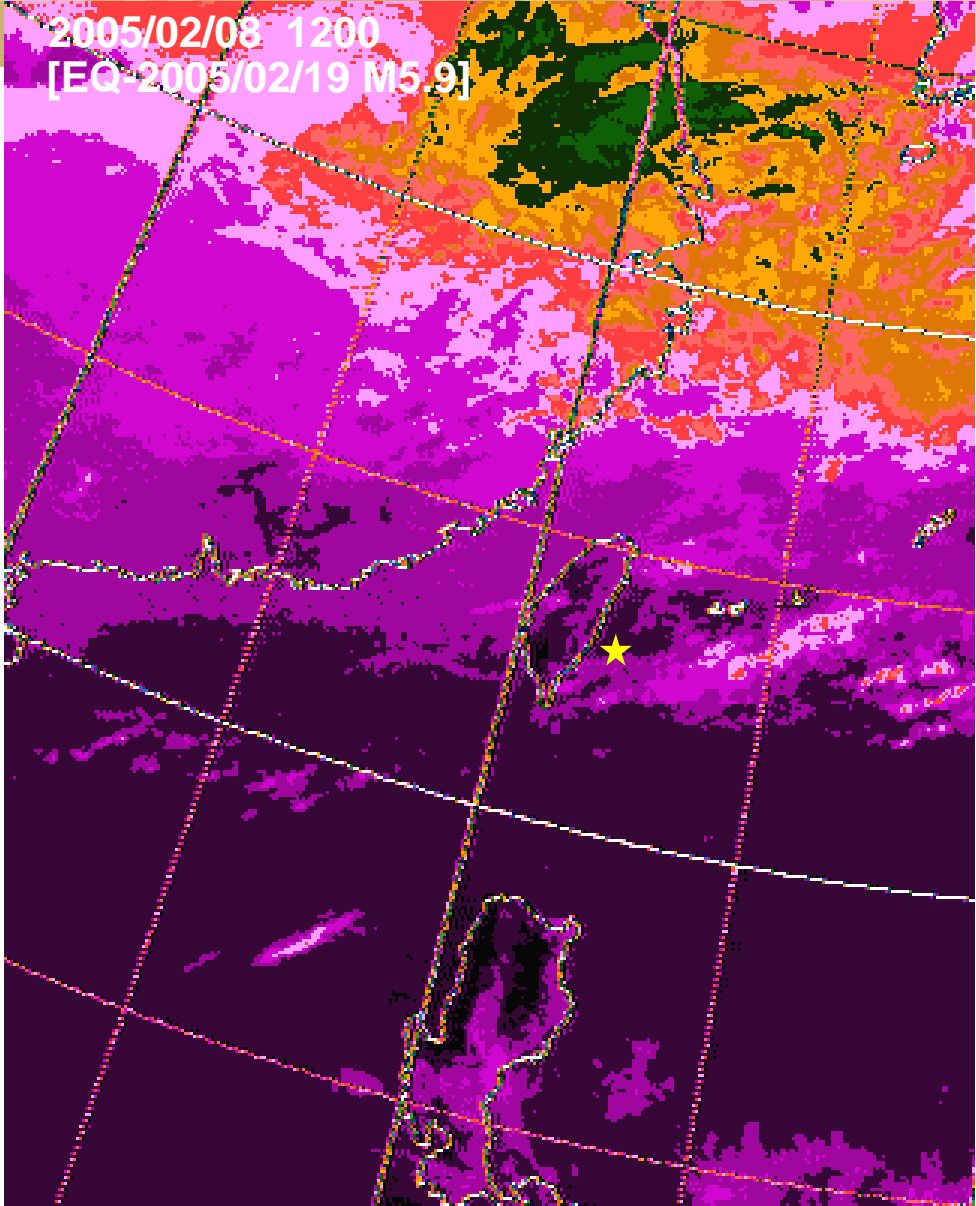
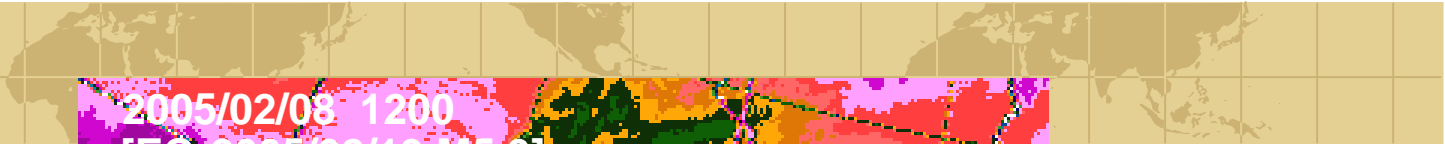
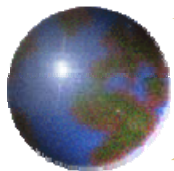
2005/01/19 1400
[EQ-2005/01/21 M6.0]

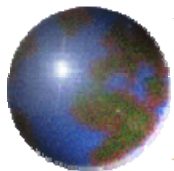




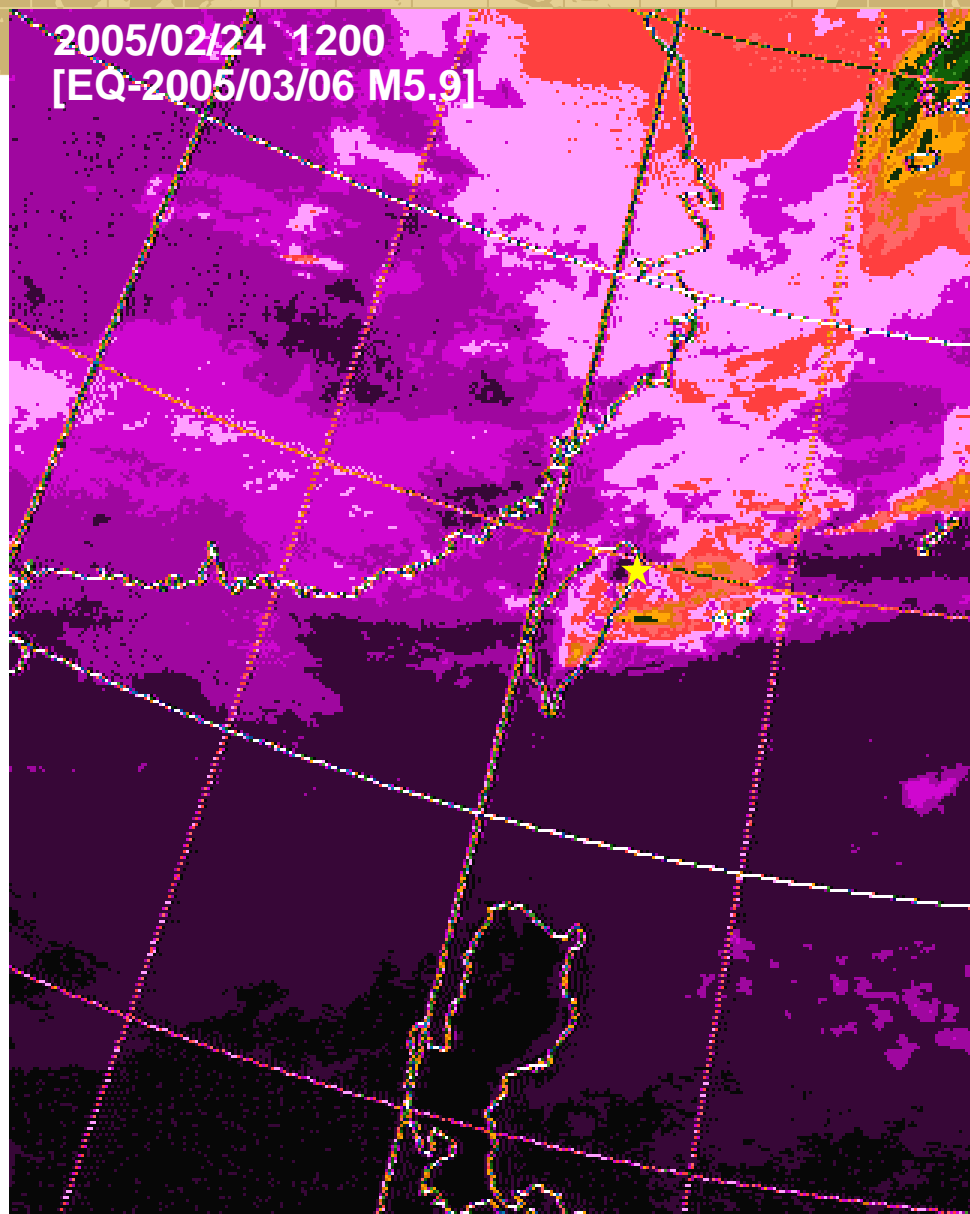
2005/01/24 1400
[EQ-2005/02/01 M5.2]

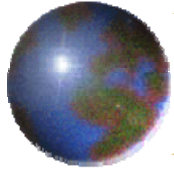






2005/02/24 1200
[EQ-2005/03/06 M5.9]





The End
Thank You!