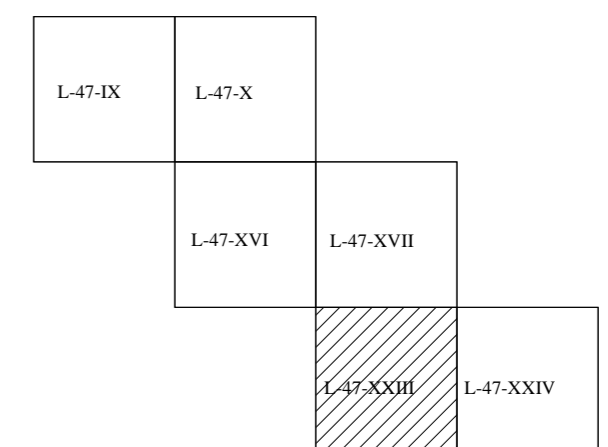
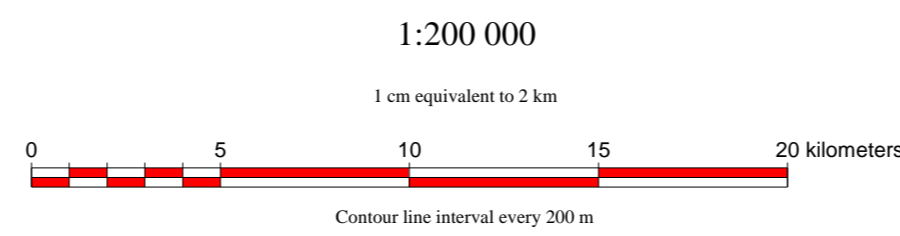
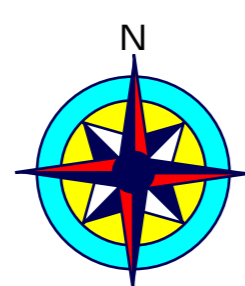
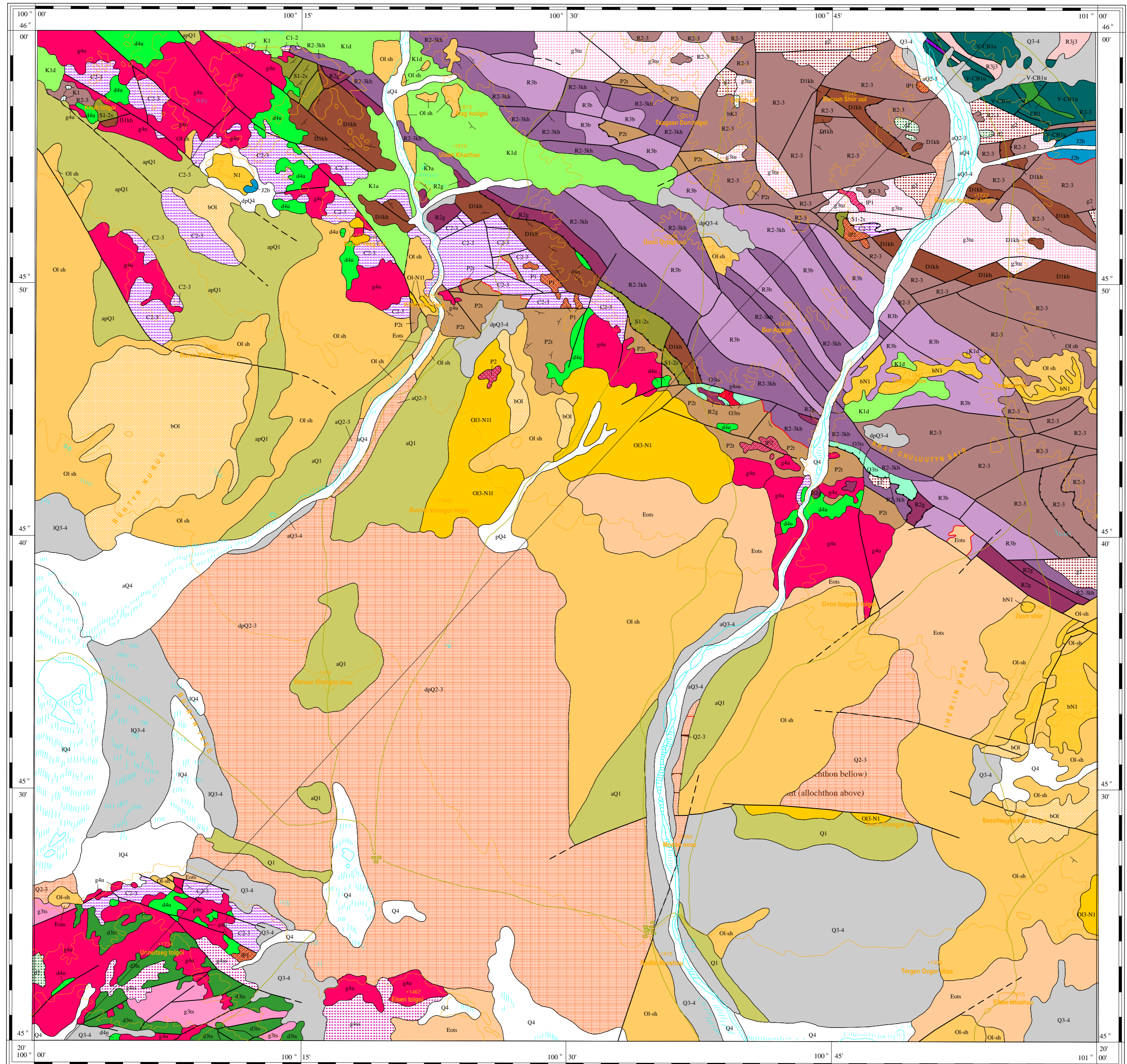


GEOLOGICAL MAP

L-47-XXIII

MONGOLIA
Mineral Resources Authority of Mongolia
Office of Geology
Bureau of Geological Investigation C 1998

JAPAN
Japan International Cooperation Agency
Geological Survey of Japan



LEGEND

Q4: a-alluvium, l-lacustrine	IP1: Subvolcanics
Q3-4: ap-alluvium-proluvium, dp-deluvium-proluvium	C2-3: Terrestrial volcanics
Q2-3: dp-deluvium-proluvium	D1kh: Khurentolgoi Formation
Q1: alluvium	S1-2s: Saran-uul Formation
bN1: Flood Basalt	O3ts: Tsagaandel Formation
OI3-N1: Lau Formation	g3tu: Tsakhir-uul Complex (granites)
OI-sh: Shand-gol Formation	g3ts: Togtokhynshil Complex (granites)
bOI: Flood Basalt	d3ts: Togtokhynshil Complex (diorites)
Eo-ts: Tsagaan-oovo Formation	vCB1: Bayankhongor Ophiolite Complex (pillow lavas)
K1d: Dovont Formation	sV: Bayankhongor Ophiolite Complex (metamorphosed ultrabasic rocks)
K1a: Andayhudag Formation	V-CB1u: Ulziit-gol Formation (undivided)
bK1:	R3j3: Jirent-nuruu Formation (upper M.)
J2b: Bayanteeg Formation	g2: Riphean Granite
g4su: Saran-uul Complex (granites)	d2: Riphean Diorite
g4u: Ulaagchin Complex (granites)	R3b: Burd-gol Group: Bumbat Formation
d4u: Ulaagchin Complex (diorites)	R2-3kh: Burd-gol Group: Khubulag Formation
g48s:	R2g: Burd-gol Group: Gun-hudag Formation
IP2: Subvolcanics	R2-3: Burd-gol Group: undivided
P2t: Tuingol Complex	

Published by:
Geoinformation Section of Bureau of Geological Investigation

Edited by:
O. Tomurtogoo, T. Nakajima, Y. Takahashi, Ch. Minjin,
N. Ichimov, and S. Oyungere

Geological Survey and Map Compilation by:
O. Tomurtogoo, Y. Takahashi, T. Nakajima, N. Ichimov,
S. Oyungere, Ch. Minjin, Lh. Bayarmandal, Y. Teraoka,
Ch. Kurimoto, F. Tungalag, B. Delgertsogt, and K. Naito

Computer Processing by:
Y. Watanabe, G. Djidmaa, N. Enhtsogt, and M. Arvinzon

GIS SYSTEM: TNTmips (Microimages, Inc.)
PROJECTION: Transverse Mercator Projection
ZONE: 47
SPHEROID: Bessel 1841
ORIGIN LATITUDE: N 00 00 00.00
CENTRAL MERIDIAN: E 99 00 00.00
FALSE EASTING: 500000m
FALSE NORTHING: 0.00000m