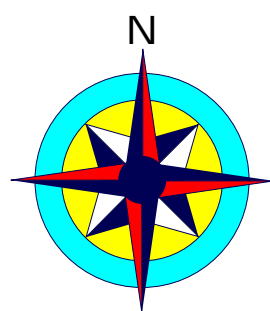
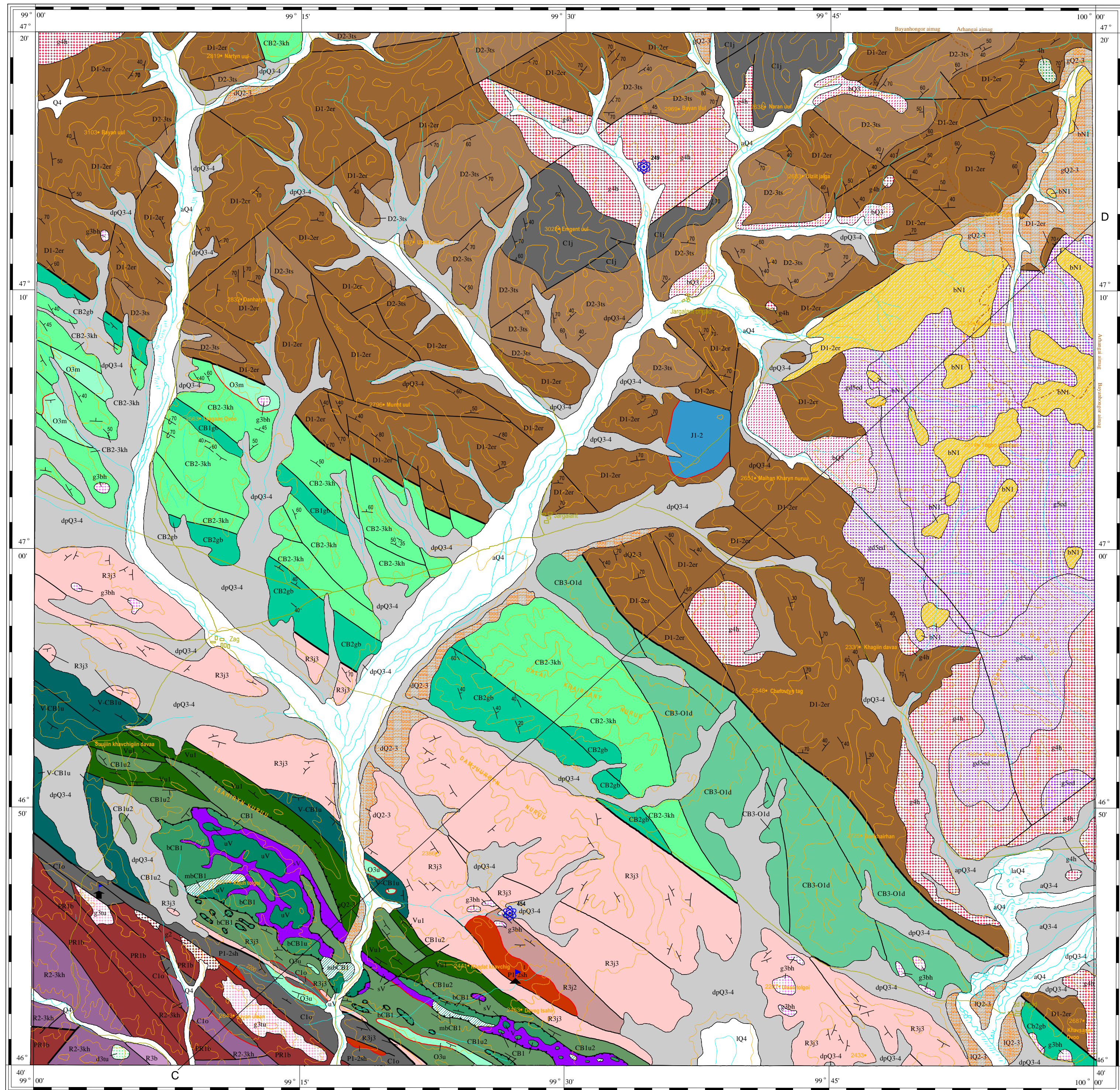


# GEOLOGICAL MAP

## L-47-X

MONGOLIA  
Mineral Resources Authority of Mongolia  
Office of Geology  
Bureau of Geological Investigation C 1998

JAPAN  
Japan International Cooperation Agency  
Geological Survey of Japan

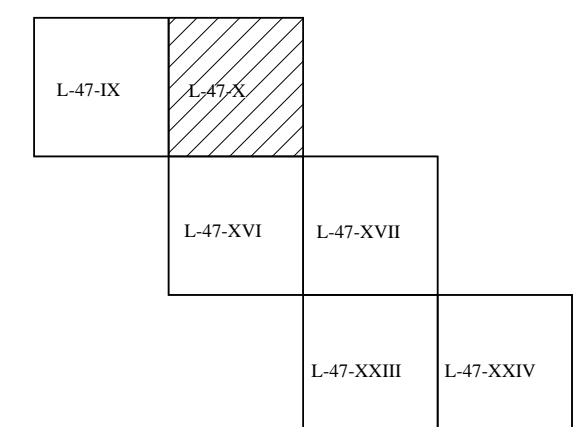


1:200 000

1 cm equivalent to 2 km



Contour line interval every 200 m



### LEGEND

Q4: a-alluvium, la-lacustrine-alluvium, l-lacustrine	g3tu: Tshahir-uul Complex (granites)	Unconformity
Q3-4: dp-deluvium-proluvium, a-alluvium, ap-alluvium-proluvium	d3tu: Tshahir-uul Complex (diorites)	Main normal fault
bQ3: Flood Basalt	CB3-O1d: Zag Group: Dalai-khairhan Formation	Major normal fault
Q2-3: a-alluvium, l-lacustrine, d-deluvium, g-glacial	CB2-3kh: Zag Group: Khar-us-gol Formation	Thrust fault (allochthon below)
bN1: Flood Basalt	CB2gh: Zag Group: Gurvanbulag Formation	Thrust fault (allochthon above)
J1-2: Undivided	bCB1: Bayanhongor Ophiolite Complex (Pillow lavas)	Locality of radiometric age (Ma)
g5ed: Egiin-davaa Granite (granites)	mbCB1: Bayanhongor Ophiolite Complex (Sheeted dykes)	Locality of microfossils (reference No.)
g5ed: Egiin-davaa Granite (granodiorites)	uV: Bayanhongor Ophiolite Complex (Gabbroes)	Locality of fossil fauna (reference No.)
g4h: Khangai Complex (granites)	sV: Bayanhongor Ophiolite Complex (Metamorphosed ultrabasics)	Locality of fossil flora (reference No.)
d4h: Khangai Complex (diorites)	CB1u2: Jirem-nuruu Group: Ulziit-gol Formation (Upper M.)	
P1-2sh: Sharga-nuruu Formation	Vu1: Jirem-nuruu Group: Ulziit-gol Formation (Lower M.)	
C1o: Orhi-khondii Formation	V-CB1u: Jirem-nuruu Group: Ulziit-gol Formation (Undivided)	
C1j: Khangai Group: Jargalant Formation	R3j3: Jirem-nuruu Group: Jargalant-nuruu Formation (Upper M.)	
D2-3s: Khangai Group: Tsetserleg Formation	R3j2: Jirem-nuruu Group: Jargalant-nuruu Formation (Middle M.)	
D1-2er: Khangai Group: Erdenetsogt Formation	g2: Riphean Complex (granites)	
O3u: Ulaansair Formation	R3b: Burd-gol Group: Bumbat Formation	
O3m: Munhet-uul Formation	R2-3kh: Burd-gol Group: Khubbulag Formation	
g3bh: Borhairhan Granite (granites)	PR1b: Bombogor Metamorphic Complex	

Published by:  
Geoinformation Section of Bureau of Geological Investigation

Edited by:  
O. Tomurtogoo, T. Nakajima, Y. Takahashi, Ch. Minjin,  
N. Ichinnorov, and S. Oyungere

Geological Survey and Map Compilation by:  
O. Tomurtogoo, Y. Takahashi, T. Nakajima, N. Ichinnorov,  
S. Oyungere, Ch. Minjin, Lh. Bayarmandal, Y. Teraoka,  
Ch. Kurimoto, F. Tungalag, B. Delgersogt, and K. Naito

Computer Processing by:  
Y. Watanabe, G. Dijdmaa, N. Enhtsogt, and M. Arvinzon

GIS SYSTEM: TNTmips (Microimages, Inc.)  
PROJECTION: Transverse Mercator Projection  
ZONE: 47  
SPHEROID: Bessel 1841  
ORIGIN LATITUDE: N 00 00 00.00  
CENTRAL MERIDIAN: E 99 00 00.00  
FALSE EASTING: 500000m  
FALSE NORTHING: 0.00000m