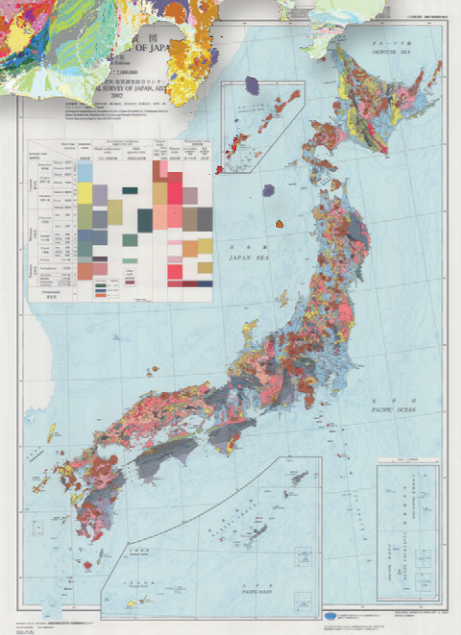


## Points to study What is geological map?

Geological maps are color-coded maps that show the distribution of geological formations, rocks, etc., under the ground. What kinds of rocks are there under the town where you live?



GeomapNavi



Geological maps displayed in Exhibition Room 1!

For more than 100 years, the Geological Survey of Japan, AIST, has been creating maps that cover the entire nation of Japan. They are still studying the history of the Earth.

Geological map of Japan 1:2,000,000 (5th edition). Issued in 2002.

## Welcome to the Geological Museum

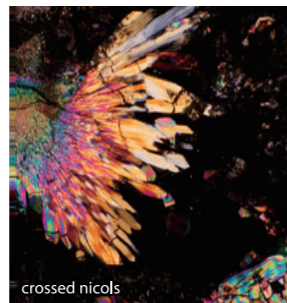
In order to foster a better understanding of the mutual relationship between people and the Earth, the Geological Museum provides the results of research activities of the Geological Survey of Japan, as well as the latest geoscientific information and exhibits with such themes as the Geology of Japan, Underground Resources, Marine Geology, Global Environment, Volcanoes and Geothermal Energy, and Earthquakes and Active Faults.

We have received a wealth of blessings from our Earth, including energy and mineral resources. While these have helped up to build great civilized societies, they have also led to environmental destruction not only on a local scale, but also on a global scale. Through the exhibits at this museum, you can learn about how the Earth is changing. We would be glad if you could use this information to consider "Understanding and living with the Earth".

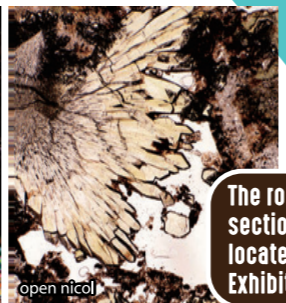
## Points to notice What is rock thin sections?

Rock thin sections are samples of rocks or minerals that have been ground and polished to a thickness of approximately 30 micrometers. When viewed through a polarizing microscope, beautiful colors and patterns of minerals can be seen. By studying the types and shapes of minerals, we can understand the origin of these rocks.

At the Geological Museum, you can see world-highest techniques for making rock thin sections.



crossed nicols



open nicols

Polarized photomicrographs of epidote in thin section



"Butterfly" (Leptidea amurensis) manufactured using techniques for making rock thin sections.



Website for Geological Sample Preparation Group \*Japanese only

The rock thin section exhibit is located in Exhibition Room 3!

## Information

- **Hours of operation** : 9:30-16:30
- **Closed** : Every Monday (if Monday is a holiday, then it is the following Tuesday), and year-end holidays (December 28 to January 4).

- **Admission** : Free
- **Parking** : Available

### ● Group visits

• Please apply beforehand for group visits for parties of 15 or more people.

Please contact us :  
TEL : 029-861-3750, FAX : 029-861-3746

\* Visitor reception is only open during museum hours.

### ● Applications for Corporate trainings

Corporate trainings reception desk : 029-861-3540

\* Reception is open from 9:00 to 17:00 on weekdays

### ● Some requests

• Please ensure that your group visit does not bother other visitors.

• Please do not smoke in the buildings.

• If you want to take pictures of exhibits and other materials, please apply beforehand at the reception desk.

• In case of emergency, please follow the instructions of museum staff.

### ● Museum Shop

The results of geological surveys have been turned into original goods like cloth towels, mini towels, notebooks, and masking tape, which are sold only at this museum.



\*Japanese only

### ● Geological Museum Kids' Page

Let's enjoy learning about geology!



\*Japanese only



## GEOLOGICAL MUSEUM 地質標本館

1-1-1 Higashi, Tsukuba, Ibaraki 305-8567  
TEL : 029-861-3750  
WEB : <https://www.gsj.jp/Muse/en/>





● Jade  
GSJ M3381



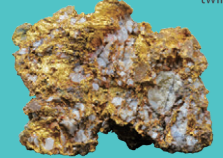
● Piemontite-quartz schist  
GSJ R8779



● Gaudryceras fossil  
GSJ F4880



● Quartz (Japanese twin crystal)  
GSJ F16638



● Native gold, "Monster Gold"  
GSJ M14585



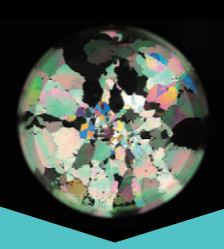
● "Time tunnel"



● Projection mapping of the Japanese islands

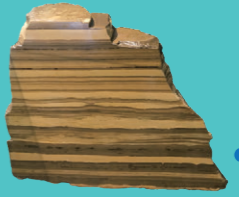


● Kaleidoscope of a rock thin section



● "Dragonfly" made of stone

● Volcanoes and volcanic rocks



● Fluorescent minerals

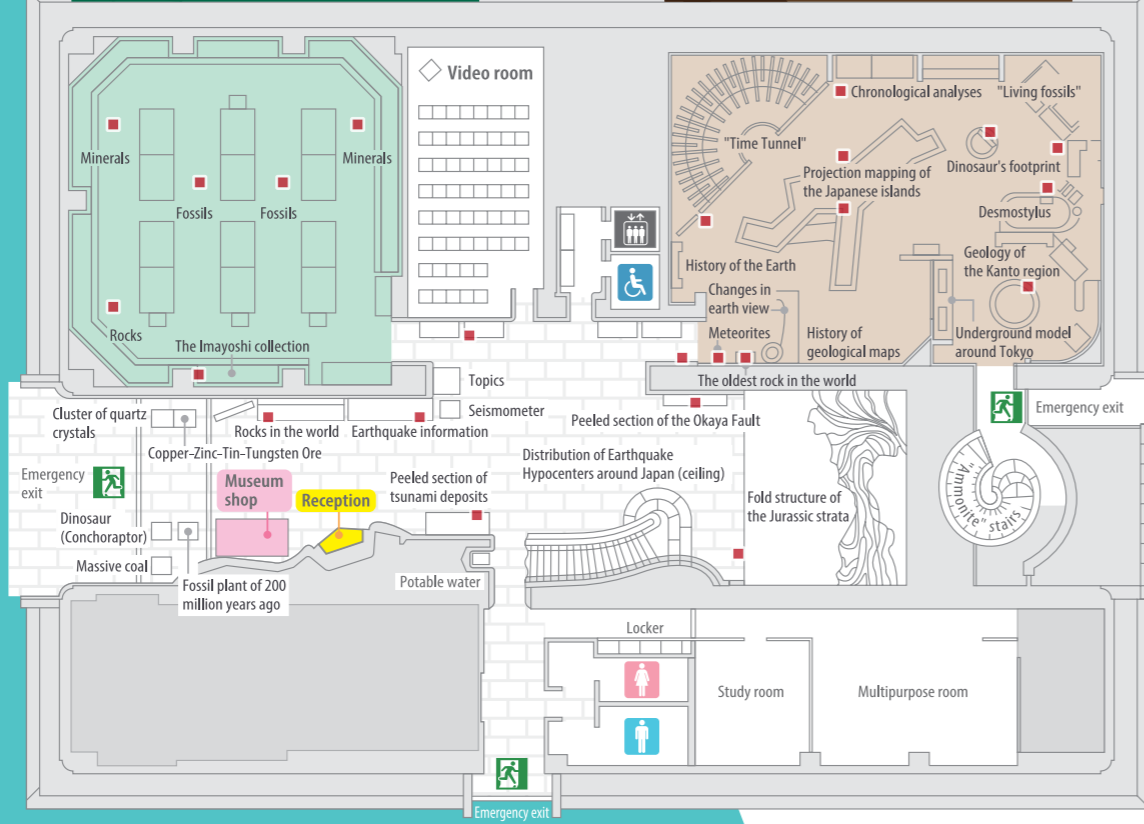
● Oil shale  
GSJ R19439

**Exhibition Room 4**  
**岩石・鉱物・化石**  
Rocks, Minerals and Fossils

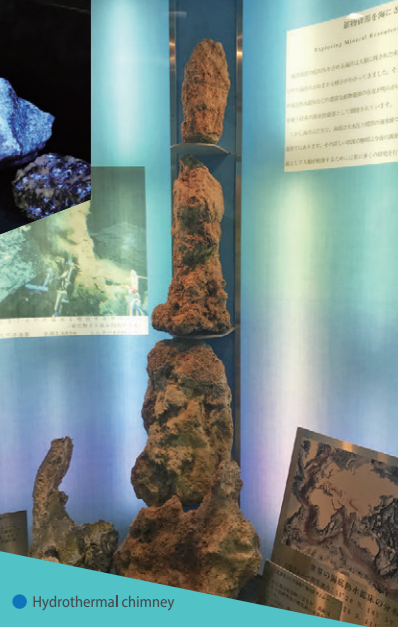
**Exhibition Room 1**  
**地球の歴史**  
History of the Earth

**Exhibition Room 3**  
**生活と地質現象**  
Geological Phenomena

**Exhibition Room 2**  
**生活と鉱物資源**  
Natural Resources and Marine Geology



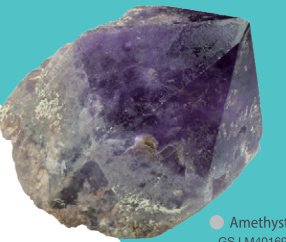
■ 2D Barcode. Ask reception for details.



● Hydrothermal chimney



● The Aoyagi collection



● Amethyst  
GSJ M40169

**1st Floor**

**2nd Floor**

**休憩室**  
Rest area  
\* No eating in the lounge

