

数値地質図 G-8 「東・東南アジアの都市域地球科学データ (第2版)」

Urban Geoscientific Data of East and Southeast Asia
- GIS data sets of 11 cities -

発行年：2001

この CD-ROM は、CCOP (東・東南アジア沿岸沿海地球科学計画調整委員会) のプロジェクト「東・東南アジアの地球科学図デジタル編纂, 第Ⅲ期」の最終成果です。CCOP は、1966 年に設立された国際機関で、主な活動は、技術移転や技術協力、資源と環境の調和のとれた発展のための財政的、技術的支援の企画・調整です。メンバー国はカンボジア、中国、インドネシア、日本、韓国、マレーシア、PNG、フィリピン、シンガポール、タイ、ベトナムである。これらの国の都市から、名古屋、広州-仏山、東營、蔚山、クアラルンプール、ハノイ、プノンペン、ポートモレスビー、セブ、プーケット、バンドンについて、地質図、地形図、水資源図、活断層図、土地利用図、ライフライン図などのうちそれぞれの都市において重要だと思われる情報を数値化し、データベース化しました。

DCGM III 作業部会編

Instruction for the CD-ROM

This CD-ROM set provides files of geoscientific data of large urban cities of East and Southeast Asia. Included are data in .shp format and .rvc for the viewer programs "ArcExplorer" and "TNTAtlas" respectively. Metadata and other important document are enclosed in "Document " Folder.

Composition of the CD-ROMs

CD-ROM Disc 1:

Database of .shp format: Format developed by ESRI Co. Ltd.

Viewer software, ArcExplorer, ESRI Co. Ltd.: You can install this program to your computer.

Document Folder: Metadata, Demo file showing how to use the CD-ROM, explanatory note File.

CD-ROM Disc 2:

Database of .rvc format: Format developed by MicroImages Inc.

Viewer software, TNTAtlas, MicroImages Inc.: You can install this program to your computer.

Document Folder: Metadata, Demo file showing how to use the CD-ROM, explanatory note file, Documents on DCGM III.

< Disc 1 >

How to use Disc 1

Installation of ArcExplorer2

1. Insert CD-ROM Disc 1 to your CD drive.
2. Click ae2setup.exe and just follow the instructional windows for complete installation.

* ArcExplorer 2 is a free viewer program from Environmental Research

Institute (ESRI). Click, Info.txt for ArcExplorer License Agreement or Access <http://www.esri.com/software/arcexplorer/index.html> for further information.

Navigating the DCGM III Dataset Using ArcExplorer2

1. Double-click the ArcExplorer shortcut from the Windows desktop.
Arcexplorer will start.
2. Click "File" in the menu bar and select "Open Project".
3. Select a project file from any country directory (i.e. Cambodia¥Geology.AEP)
4. Detailed guide for using Explorer2 is explained in ArcExplorer.pdf document.
5. Metadata of DCGM III Project Files and Theme Layers are found under Document directory.

Recommended System requirements

Arcview 2 runs on Windows 95/98/2000/NT operating systems.

< Disc 2 >

How to use Disc 2 in Window machines

Installation of DCGM III Atlas

1. Insert CD-ROM Disc 2 to your CD drive. The installation program will automatically run.
2. Click Install, to install TNTAtlas, and just follow the instructional windows to complete installation.
3. Point the mouse to TNTAtlas, and right-click. Choose Create Shortcut. A shortcut will be created.
4. Drag the shortcut to your desktop.

Navigating the DCGM III Atlas, using TNTAtlas

1. Double-click the TNTAtlas shortcut from the Windows desktop. TNTAtlas will start.
2. Click "File" in the upper bar, and select "Open".
3. Double-click URBANGIS.atl, to start DCGM III Atlas.
4. Click the target city, to get into the city's map layouts.
5. Click the Map Layout you want to browse.

You can explore the Map layers and its attributes at the Layer Manager window.

6. To go back to the previous page, click "return mark" in Layer Manager Window.
7. To go back to the home page, click "home mark" in Layer Manager Window.
8. To leave TNTAtlas, click "File" in the upper bar and select "Exit".

Recommended System requirements

Computer with Pentium / 133 MHz or higher with Windows 95/ 98/2000/Me or Window NT3.5/4.0, and high resolution Display.

How to use Disc 2 in Machintosh

Installation of DCGM III Atlas

1. Insert CD-ROM Disc 2 to your CD drive. The installation program will automatically run.
2. Click Install, to install TNTAtlas, and just follow the instructional windows to complete installation.
3. Point the mouse to TNTAtlas, and right-click. Choose Create Shortcut. A shortcut will be created.
4. Drag the shortcut to your desktop.

Navigating the DCGM III Atlas, using TNTAtlas

1. Double-click the TNTAtlas shortcut from the Windows desktop. TNTAtlas will start.
2. Click "File" in the upper bar, and select "Open".
3. Double-click URBANGIS.atl, to start DCGM III Atlas.
4. Click the target city, to get into the city's map layouts.
5. Click the Map Layout you want to browse.

You can explore the Map layers and its attributes at the Layer Manager window.

6. To go back to the previous page, click "return mark" in Layer Manager Window.
7. To go back to the home page, click "home mark" in Layer Manager Window.
8. To leave TNTAtlas, click "File" in the upper bar and select "Exit".

Recommended System requirements

Power Macintosh, iBook, iMac with Mac OS 8.5 or later

Recommended Form as Bibliographic References

Users who want to publish any result obtained from the digital data of this CD-ROM set should refer to this CD-ROM set in a following form.

DCGM III Working Group - Coordinating Committee for Coastal and Offshore Geoscience Programmes in East and Southeast Asia (CCOP) and Geological Survey of Japan (GSJ), Urban Geoscientific Data of East and Southeast Asia - GIS data sets of 11 cities (Nagoya, Guangzhou-Foshan, Dongying, Ulsan, Kuala Lumpur, Hanoi, Phnom Penh, Port Moresby, Cebu, Phuket, Bandung), Second Edition, Digital Geoscience Map G-7, Geological Survey of Japan

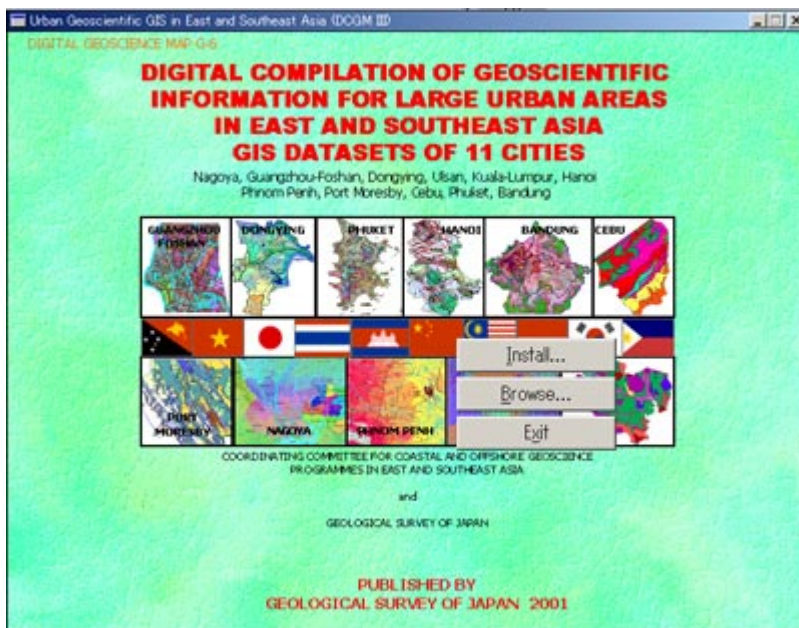
As these CD-ROMs include data from various sources, please take care of permission and acknowledgement for the original data source when users are to publish using some parts of the data in this CD-ROM. The sources of the data are shown in metadata of each layer in DCGM III ATLAS, and in the Metadata file in the Document Folder in the CD-ROM Disc 2.

Disclaimer

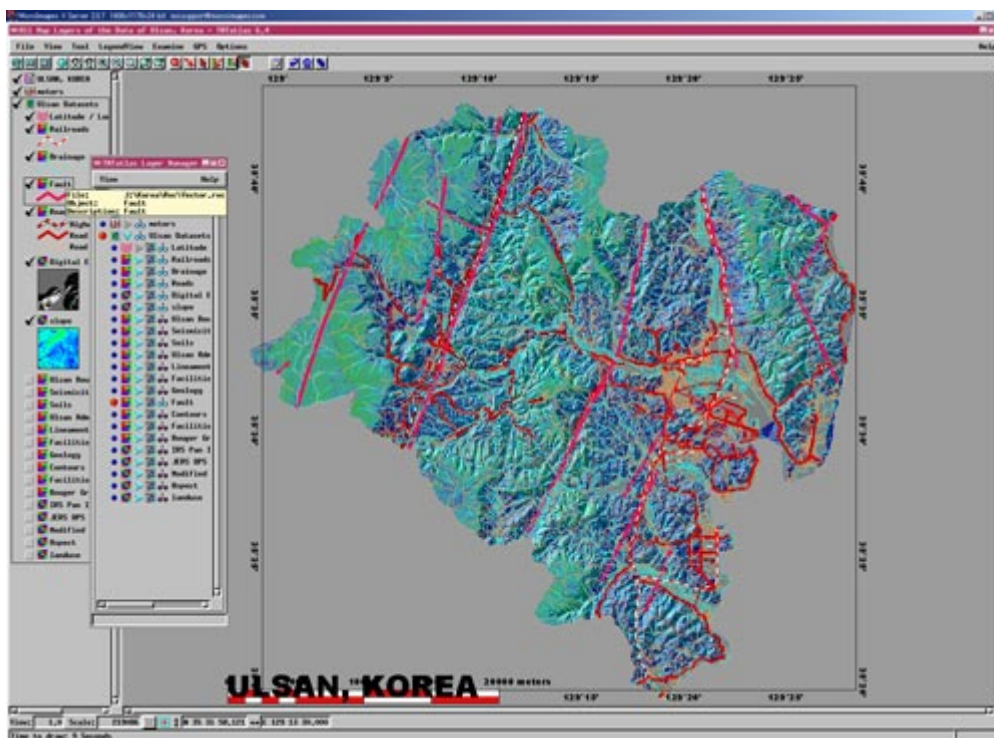
DCGM III Working Group of CCOP and GSJ accept no responsibility for any damage incurred or errors caused by using the data and software on this CD-ROMs (Disc 1 and 2).

CD-ROM 収納データ表示例

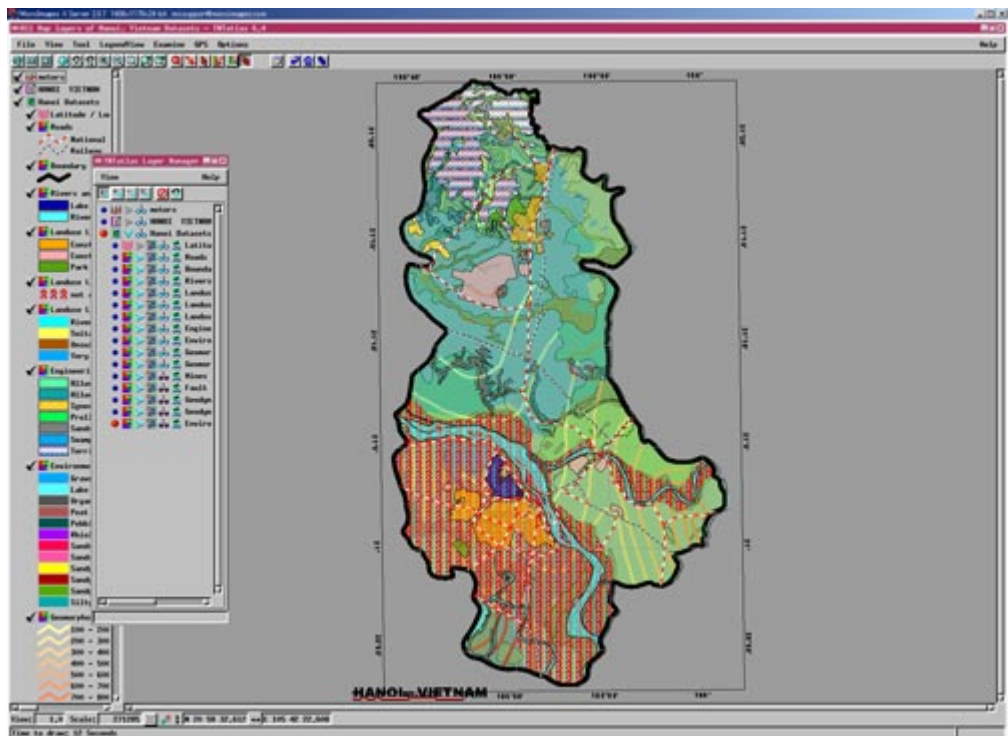
[DCGM III アトラス起動画]



[TNTAtlas での表示例]



[TNTAtlas での表示例]



[TNTAtlas での表示例]

